



RGSQ Bulletin

February 2015

ISSN 1832-8830

Vol 50 no 02

Published by The Royal Geographical Society of Queensland Inc, a nonprofit organisation established in 1885 that promotes the study of geography and encourages a greater understanding and enjoyment of the world around us.

Patron: H.E. Paul de Jersey AC, Governor of Queensland
President: Mr Leo Scanlan

In this issue

- Lecture meeting: March 3 – Mapping Queensland in the 21st Century
- Activity: March 4 - Museum of Australian Military Intelligence, Canungra
- Trek – April 27 – May 7 The Warrumbungles
- Overseas Trek – Sri Lanka

From the President

On Friday 13th February we held an 'Evening of Treks Revisited' at 7.30pm in the Society's auditorium at Milton. It is pleasing to report that it was a rousing success with just short of 70 people attending. I can now definitely say RGSQ is on track to cement this evening onto the social calendar of treks and activities for our Society in coming years. I would like to thank all those who contributed to this evening's success and the Tours and Activities Committee for the excellent programme presented throughout 2014.

Later in this Bulletin I would like to draw the attention of the RGSQ membership to our advertisements for this year's major treks to the Warrumbungles starting on April 27th, Sri Lanka on 5th September, and Kangaroo Island on October 10th.

This year on the 25th April, 2015 is the 100th anniversary of the ANZAC landings at Gallipoli and it would be remiss of me not to mention the ultimate sacrifice that many of our fellow countrymen paid in the many wars that Australians have been involved in from the Sudan, The Boer War, and other conflicts around the world right up to the present day. The significance of physical geography

has also played an important part in the planning and resolution of these conflicts, in particular the Gallipoli campaign. Some years ago I had the pleasure of leading a small group of RGSQ members to ANZAC Cove at Gallipoli. This was a very moving experience as ANZAC is very firmly embedded inside the Australian culture.

Geographical comment:

'China yet to warm to curbs on coal' (*Weekend Australian February 14-15, 2015*)

Last year, China's President Xi Jinping unveiled the nation's new climate goals alongside US President Barack Obama at the Asian Pacific Economic Co-operation meeting. Mr Xi promised China's emissions would be capped by 2030. At the same meeting the US was promising to cut emissions by 26-28 percent of 2005 levels by 2025.

While it doesn't detract from the excitement that is Hong Kong, on our recent 'RGSQ trek to Hong Kong' the pollution over Victoria Harbour was evident with many of the daylight hours reduced to a kind of foggy gloom and at night the brilliant skyline somewhat dimmed by the same pervading gloom. I'm sure asthma and related breathing difficulties must be prevalent amongst the population both here and further into mainland China as well.

China's rapid industrialisation is fuelled by fossil fuels with almost 60 percent made up of coal and 80 percent overall reliant on fossil fuels. Government edicts have indicated a cut of 50 million tonnes of coal imports this year. Penalties now apply in China and large coal miners

were ordered to cut production by 125 million tonnes in the final three months of last year.

Greenpeace research estimates China's government will have to increase renewable energy targets by 800-1000 gigawatts in the next 15 years to reach their estimated target. Wages in Beijing are the highest in the country but many people cannot afford coal fired central heating. In one Xintian village (population 10,000) there are 5 coal-fired burners operating from November to March and, despite growing concern at the consequences, there isn't any possibility of reductions in the near future.

Despite the downturn in coal imports, China imported an estimated 222 million tonnes of coal (down about 11 per cent) much of which was sourced in Australia. Only 8 of China's 74 largest cities had everyday air quality that was considered safe. It's estimated that 250,000 people died prematurely in China last year as a result of pollution, and that's from official Chinese figures.

Beijing is currently in the process of introducing a system of standards while at the same time Beijing's mayor indicated the capital was barely habitable. China is also the largest consumer of coking coal. In its December quarterly report, the Australian Department of Industry estimates that China will import 65 million tonnes with Australia providing the bulk of that coking coal. China has set ambitious goals to reduce emissions but there are questions whether the nation has the will to meet its environmental goals.

While it's no secret that the 'working' class are burning coal bricks to provide central heating right in central Beijing, and while not

mentioning Queensland's coal industry directly, one cannot divorce the facts of our complicity in trafficking vast amounts of coal from ports right here on the Queensland Coast. This all makes for some interesting and sobering reading.

If you would like to read the full report from Scott Murdoch, China Correspondent, it is on Page 25-26 of the Weekend Australian February 14-15.

Leo Scanlan

Lecture Meeting – Tues 3 March, 2015

Mapping Queensland in the 21st Century

by Steven Jacoby

Where: "Gregory House,"
237 Milton Rd, Milton.

Time: 7:30 p.m.

Steve is the Executive-Director in the Department of Natural Resources and Mines, responsible for spatial data, systems, services and infrastructure. In his present role since 2009, he chairs the Queensland Spatial Information Council and represents Queensland nationally on a number of peak bodies.

Commencing in the Victorian Lands Department as a trainee, Steve went on to lead its Land Information Group for 7 years. In 2003, he moved to Queensland as CIO for the Department of Natural Resources and Water.

Steve has a Bachelor of Applied Science (RMIT) and a research Masters from Melbourne University and is currently an Adjunct Professor with the Institute for Future Environments at QUT.

In the 2014 Queen's Birthday Honours Steve received the Public Service Medal for services to land and spatial information.

Queensland's cartographers are arguably busier than they have ever been in the State's history. What does a 21st Century cartographer do, how has their role changed in recent years and what is driving the demand for today's cartographic products and services?

The address will describe how access to the state's mapping

resources have been transformed over the last 5 years, and will demonstrate how the public can access literally hundreds of spatial data layers on every imaginable topic via simple and free tools. The presentation will chart these developments that were inspired by the natural disasters in 2011, enabled by the innovative adaptation of technology and most recently showcased to world leaders during the G20 meetings in Cairns and Brisbane.

Lecture Meeting – Tues 7 April, 2015

Soldier Settlements of the Granite Belt

Presenter: Lorene Long

What's in a name? - how and why RGSQ got its new title.

The question has been asked, and the answer may be of interest to other members. This account is based on Society documents, and the records and recollections of then Presidents Peter Lloyd and Les Isdale.

As early as November 1988, during Peter's Presidency, there was movement for a change of name and it was proposed in Council by Dr Peter Griggs, and passed.

The name change was recommended by Council to members on Tuesday 8 August 1989, at the Special General Meeting of the Society, held at its new home, 'Gregory Hall' 112 Brookes Street Fortitude Valley.

In presenting the recommendation to the meeting, Council expressed the opinion that *'the present name does not identify the Society as a Queensland Society. In many instances the word Queensland is not mentioned, and our Society is taken as a branch of an Australasian body, which does not exist. Again our Society is often identified as the Royal Geographical Society of London. The alteration should more truly identify our Society.'*

The meeting agreed that – *'The name of the Society shall be 'The Royal Geographical Society of Queensland Incorporated'.*

This decision was presented to the Department of Justice for its consent, and new Letters Patent issued by His Excellency the Governor on 12 April 1990.

At that point, the name 'The Royal Geographical Society of Australasia, Queensland Branch', which had served us for 105 years (with minor changes) since the foundation of the Society in 1885, passed into history.

In the Bulletin of July 1990 it was noted that changes were made to the constitution to accommodate the name change. They were exciting times, in which the Society's address, name, and constitution all changed, reflecting a new energy and vision of its members. We were no longer content with 'Branch' status and an outdated Constitution. Ken Sutton's 1985 attempt as President to join South Australia and Queensland together to recreate an Australian Society came to nothing so we had to move forward. The events of the Centenary, and Kath Berg's appointment to staff, set us on an adventurous path which continues to this day.

It is a matter of interest that the Royal Geographical Society of Australasia, South Australian Branch, which published *'The Branch Without a Tree: The centenary history of the Royal Geographical Society of Australasia (SA Branch) Inc. 1885 – 1985,* is now the Royal Geographical Society of South Australia Incorporated. Our two Societies share the same foundation date, 10 July 1885, and now new titles.

A detailed account of some of those events is contained in the Society's excellent Centenary History, *'A Dream in Trust'*, by Peter Griggs, Vice-President 1988 to December 1990 when he moved to Cairns to take up a lectureship in geography at JCU.

Peter Lloyd, Les Isdale

Adelaide & Kangaroo Island Trek

When: Fri 9 - Mon 26 Oct 2015.

2015 is the 130th anniversary of both RGSQ and RGSAA and it is fitting that we celebrate by visiting South Australia. The trek will start in Adelaide on Fri 9 Oct where we will stay for one week before moving south to Kangaroo Island for ten nights. While in Adelaide, we will meet our SA compatriots while attending one of their lectures, enjoying a meal together and visiting their extensive book collection at the State Library. We will also be fortunate to experience the Mawson collection at the Museum, immerse ourselves in the early stories of Adelaide and South Australia's history and explore the immediate districts.

On Kangaroo Island, we have planned a very full itinerary as there is a lot to see & do on this small island. Wildlife is at the forefront but there is much to learn of the history and geography of this isolated place. Did you know that Matthew Flinders who named Redcliffe in 1799 also named Kangaroo Island in 1802? There is also an abundance of beautiful food on offer. The Trek will end on Monday 26 October in Kingscote where Trek participants can either stay on the Island for a little longer or depart for home or other points in between or beyond.

Accommodation will be in caravan parks - most supply cabins as well as powered and unpowered sites. As the journey to Adelaide from Brisbane is over 2,000 km, there is the opportunity for trekkers to fly to Adelaide, stay in a cabin and hire a vehicle, or catch the bus to Kangaroo Island then hire a vehicle. Of course, you may wish to stay at any other accommodation of your choosing.

The RGSQ fee for members is expected to be approximately \$150-200 (to cover some activities and meals) with final costing to be advised. Please register your interest with the office as October is a busy month in this area. Trekkers will need to make their own ferry & accommodation bookings as soon as possible and are responsible for their own travel arrangements - please advise that you are an RGSQ member. So don't miss out on this

opportunity to meet up with our SA geographic friends.

Members are welcome to participate in either section of this Trek.

To help with planning, our itinerary with prices of accommodation and places of interest is below:

Kay Rees [kayrees@gmail.com]

ADELAIDE

Fri 9 - Thur 15 Oct 7 nights
Adelaide Caravan Park 46
Richmond St Hackney (2km city)
08 8363 1566
<http://adelaidecaravanpark.com.au/>
power \$40, unpowered N/A,
cabins From \$129

Adelaide Central markets, tram to Glenelg, Botanic Gardens at Wittunga, or Mt Lofty Botanic Gardens, Adelaide Hills Wine Region, SA Museum, Tate Museum Uni of Adelaide, SA Art Gallery, State Library RGSSA book collection, historic walking tour, Migration Museum, a Bus Tour (full day) to local areas and an RGSSA lecture & dinner with members.

KANGAROO ISLAND

Fri 16 Oct
SeaLink Ferry from Cape Jervis to Penneshaw

It is possible to book the ferry & some accommodation through SeaLink

<http://www.sealink.com.au/kangaroo-island-ferry/fares/ReturnFares>

Adult \$98 conc \$80
Vehicle \$188
caravan or trailer \$188 (for longer vehicles contact SeaLink)

PENNESHAW

Fri 16 - Sun 18 Oct 3 nights
Kangaroo Island Shores Caravan & Camping
Talinga Terrace, Penneshaw SA 5222
08 8553 1028
Email: kishores@seafont.com.au
Website: www.seafont.com.au
power \$27-30 unpowered \$23-25

NO cabins but some available at Seafront Resort, Villas 6 per x \$340 or 4 per x \$240. Other accommodation in the area.

Frenchman's Rock, Cape Willoughby, Prospect Hill Walk, Pelican Lagoon, Baudin Conservation Park, Salt Lake, Clifford's Honey Farm, D'Estrees Bay Road, American River.

KARATTA

Mon 19 - Wed 21 Oct 3 nights
Western KI CP & Wildlife Reserve
7928 South Coast Road, Karatta SA 5223
08 8559 7201
<http://www.westernki.com.au/enquiries@westernki.com.au>
power \$30 (2 people) Conc \$27
unpowered \$25 (2 people) Conc \$22
cabins from \$110

Murray Lagoon, Cape Gantheaume, Conservation Park, Seal Bay, Little Sahara, Vivonne Bay, Flinders Chase NP, Kelly Hill Caves, West Bay (Vennachar Point) and Hanson Bay Koala Walk & Wildlife Sanctuary.

PARNDANA

Thu 22 - Fri 23 Oct 2 nights
Parndana Hotel CP & Cabins
Corner Wedgwood Rd and Cook Street, Parndana 5220
08 8559 6071
<http://www.parndanahotel.com/>
power from \$40 [only 8 sites]
unpowered from \$25
cabins from \$90
Cape Borda, Parndana Conservation Park, Stokes Bay, Snelling Beach and Western River.

KINGSCOTE

Sat 24 - Sun 25 Oct 2 nights
Optional extra nights
Kingscote Tourist Park & Family Units
Cnr First & Third Sts, Brownlow Ki SA 5223
(08) 8553 2394
<http://kingscotetouristpark.com.au/>
power from \$31-43
unpowered from \$28-37
cabins from \$69-148

Raptor Domain, Pelican feeding, Island Pure Sheep Dairy & Cheese Factory, Emu Ridge Eucalyptus Oil Distillery, Emu Bay, Island Beehive, Kangaroo Island Penguin Centre, Boat tours, Hope Cottage Museum and Reeves Point.



RGSQ SRI LANKA 2015

When: Sat 5 September departing

Cost: To be advised

You probably haven't thought of Sri Lanka as a destination where you might see leopards so why not come with The Royal Geographical Society of Queensland in September of 2015 to exotic Sri Lanka? Yala National Park is one of the highlights with one of the highest concentrations of leopards anywhere in the world. If that's not enough, Yala is the habitat of 215 bird species, a resident elephant herd of approximately 300-350, Sri Lankan sloth bears, and water buffalo. All 5 globally endangered sea turtles varieties also visit the park and it is home to two species of Sri Lankan crocodiles.

Other National Parks also beckon - Horton Plains with sambhur deer, wild boar, and otters. Udawalawe National Park has jackals, barking deer, potted deer, sambur, and large herds of elephant in their natural habitat.

It's not only the national parks. Sri Lanka is brim full of history and culture; Sigiriya Rock Fortress, King Kasyapa's citadel is a step back in time and one of the finest examples of Sri Lankan arts and culture. A tour of Polonnaruwa: once a medieval capital, with Buddha and Hindu sculptures, and examples of ancient irrigation canals. Kandy: the last royal capital of Sri Lankan kings, and, of course, the Temple of the Sacred Tooth relic of Lord Buddha.

There's still Weligama and the stilt fishermen, Galle, the southern capital, Dutch architecture, and we've managed to factor in an authentic Sri Lankan cooking class. Of course, you wouldn't travel to Sri Lanka without sampling a good cup of pure Ceylon Tea! A trip to Nuwara Eliya and the cold and misty hills and lush green blankets of tea plantations should provide another highlight.

Last of all, there's the Kosgoda Sea Turtle Hatchery, Colombo, and, perhaps, a little night life and some lifelong memories. This tour to Sri Lanka is 14 Days/13 nights flying Singapore Airlines and departing Australia on Saturday, September 05, 2015, and arrives back in Australia on Monday, September 19. Sound interesting? It's full of culture, wildlife, and excitement so if you're at

all interested in coming along with a group of like-minded people, phone **Leo Scanlan at home on 3343 4398** for further information and register your interest. Participants will be registered on a first come basis and numbers will be limited.

The Warrumbungles Trek

When: April 27 to May 7

Cost: \$25 per person

The first of two treks planned for the mainland this year will commence on Monday April 27 and return to Brisbane on Thursday May 7. Travelling through rich cotton and grain farming country and the timber industry areas of the Pilliga, the major destination will be the Warrumbungle National Park, but the trek will include visits to the towns of Moree, Narrabri, Coonabarabran and Baradine and to the Mt Kaputar National Park, and the Forest/Conservation areas and Timmallalie National Park in the Pilliga area.

The Warrumbungle National Park was burned out in a major bushfire in January 2013 and this is an excellent time to visit to see both the regenerating of the bush and the vistas opened up by the still charred trunks of the larger trees.

We will meet in Moree on the afternoon of April 27 and visit Mt Kaputar National Park on the Tuesday and Wednesday. On the Thursday we will be taken on an aboriginal guided walk to the sacred Sandstones Caves and visit the famous Pilliga pottery en route to

Coonabarabran and the Warrumbungles where we will stay from Thursday afternoon to Monday morning. We will then travel to Baradine for a two-night stay, visiting the aboriginal sites at Dandry Gorge and see the recently installed Sculptures in the Gorge. On Wednesday we will visit the historic Woolleybah sawmill and the artesian bore pool in Pilliga en route to Moree for our last night. Trekkers may return to Brisbane on the Thursday, or go off on their own further adventures.

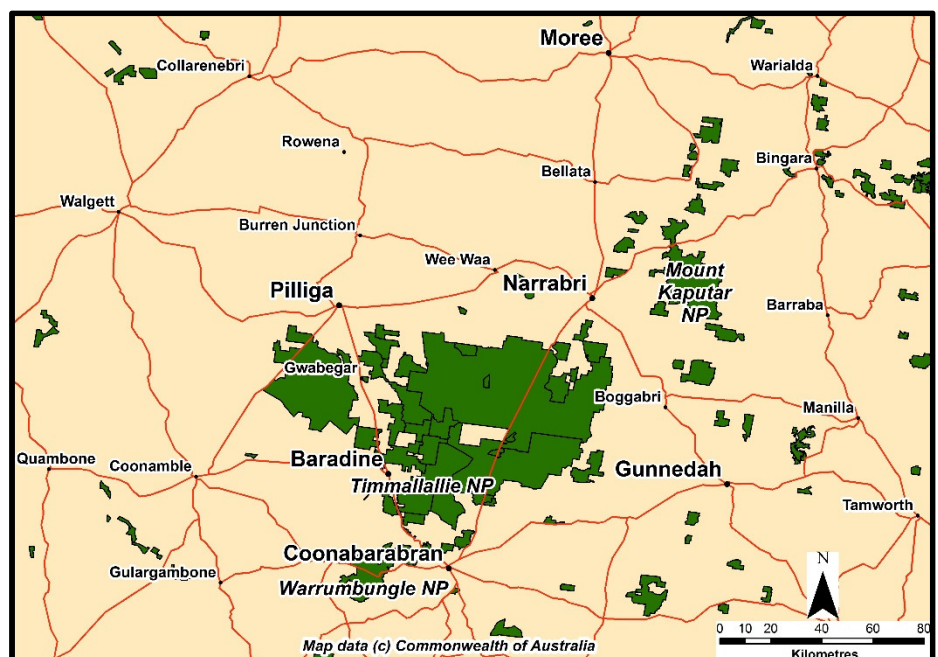
This is basically a camping trek, but cabin accommodation is available for all sites. Some of the route is on maintained unpaved roads, but 4WD is not necessary.

The registration fee for members of RGSQ for this Trek is \$25 per person, which will cover the costs of the aboriginal guide, the station owner at Woolleybah and office administration costs.

Registrants for this trek must make and pay for their own camp sites, cabin costs or the like. **May is the start of the peak tourist season in this area, so early booking is advised.** A complete list of the camp sites, details of their location and contact details are available on request from the office or from

Brian McGrath, telephone 07 3378 5960 or email brian.mcgrath@bigpond.com

Registrants will be provided with a detailed itinerary for the trek, which promises to be a most interesting, enjoyable and educational "geography on the ground" event.



Day Trip to the Museum of Australian Military Intelligence, Canungra

When: Wednesday March 4th

Where: Canungra's Kokoda Barracks

Time: 9:30 a.m.

Cost: \$5.00

ID such as a drivers licence is required to pass through the security checkpoint.

We will meet up in the car park outside the entrance to Canungra's Kokoda Barracks between 9.30 and 9.45 a.m. The barracks is just outside Canungra township on the road between Canungra and Beechmont. Because of limited parking inside the grounds, we'll run a shuttle service using two or three vehicles to the museum for as many times as are necessary.

The museum tour is set down for 10 a.m. and is expected to last till 12 noon.

Returning to Canungra township, members may wish to have a look at Lahey's Tramway tunnel, once used for transporting timber as well as for an ammunition dump during WW2. For lunch, we could meet at the Outpost Cafe in the main street at about 1p.m.

This day trip is now booked out.

Volunteers Please

Australian Geography Competition

Thank you for the great response for the March mail-out of the Question booklets and answer sheets. However, an additional person for **Wednesday 11 March** and one or two people on standby for **Friday 13 March** would be of great assistance.

*I would like volunteers for the sorting and scanning of the Answer sheets. This will occur between **Tuesday 7th April and Friday 1 May**. It is a task that requires some attention to the task steps. It is difficult to know which days the help is required as it will depend on when and how many Answer sheets are returned each day.*

We still need a few more helpers for the final working bee to send back the results and certificates which is scheduled for **Tuesday 19 to Thursday 21 May**.

Your help with the Australian Geography Competition is greatly appreciated as it is the only Australian national Geography competition which all school students can compete in.

I would like to thank Maureen Meier for her assistance in February with labelling and filling envelopes for letter that were sent directly to teachers who had entered previously.

Please ring Bernard in the office (3368 2066) if you can help.

My Local Geography

Is there something of geographic interest where you live? Is there a place in Queensland you would like to share? We would like to hear about it.

Articles are welcome for the Society's Bulletin. Email your article to info@rgsq.org.au.

Upcoming Bulletin deadlines:

April – Friday 13th March

May – Friday 10th April

June – Friday 15th May

July – Friday 12th June

Weather calendars

Each month of the Bureau of Meteorology's 2015 Australian Weather Calendar features a stunning large image related to Australia's weather, plus gives information on that month's climate, and assorted other information.

The Society has a few spare copies for sale. Because we made a bulk order, the cost is \$17.25 each. To reserve your copy, email or ring the Society. You can pick it up from the office, or collect it at the February members' meeting.

----- cut here -----

2015 Membership Renewal

According to our records, your membership has been paid up to the year shown in the top right corner of your mailing label. (For life members this space is blank.) Please contact the office if you think there may be a mistake in our records.

If you have not yet paid, please circle the appropriate fee and send this in with your payment. The mailing label on the back of this sheet gives your name and address. Please correct it if there are any errors.

You may like to consider making a tax-deductible donation for the Society's environmental and educational work at the same time.

Thank you.

I enclose a cheque/money order payable to RGSQ; or, please debit my VISA Mastercard

Card No.: ____ / ____ / ____ / ____ Expiry date: ____ / ____

Cardholder name: _____ Cardholder signature: _____

Yes, I would like my Bulletin delivered by email. My email address: _____

Ordinary	\$40.00
Ordinary Pensioner rate	\$25.00
Household	\$55.00
Household Pensioner rate	\$35.00
Student/Junior	\$25.00
Schools/Non-profit organizations	\$55.00
Corporate	\$150.00
Life	\$400.00
Donation	\$
TOTAL	\$

Hiking the Himalayas

What: nibbles and drinks, a light lunch and adventures in Nepal

When: Wednesday, 22nd April

Time: 10:30 am for 10:45am

Where: "Gregory House," 237 Milton Road, Milton

Cost: \$20.00 to be paid by 14th April.

RSVP: Book and pay with the office, Phone 3368 2066.

Visitors welcome but numbers are limited for catering.

As a girl who had seen many summers (and as many winters) I had often thought of going trekking in Nepal and realised that the time was approaching when it could be "now or never." So I booked a trek – in winter.

This was almost 30 years ago yet I still remember the excitement and the exhilaration and ... the apprehension. Could I? I could!!! One of the oldest, I was never the last.

Nepal is a fascinating country, its scenery magnificent – from the jagged snow-capped Himalayas, tumbling rivers, tiny streams tumbling over rocky beds, forests, cultivation, rice terraces marching up and down hillsides, goat trains, isolated cottages, tiny villages, towns and cities, 1,000s of temples and friendly people. And ... very cold nights.

More activities than trekking, too – you'll have to attend to find out what other adventures we enjoyed.

Look forward to seeing you.

Audrey Johnston.

Trivia

3'6" – Queensland, some of West Australia, Tasmania, some of South Australia

4'8 1/2" – New South Wales, the Indian Pacific & the Ghan

5'3" – Victoria & some of South Australia

Audrey Johnson

RGSQ Bulletin

March 2015

Lecture/Meeting: Tues 3 Mar 7:30pm
Mapping Queensland in the 21st Century,
Steven Jacoby

Activity: Wed March 4, Museum of Australian
Military Intelligence, Canungra

Volunteer days: Australian Geography
Competition, 10-12 March, 7 April – 1 May and
19-21 May.

Lecture/Meeting: Tues 7 April 7:30pm
Soldier settlements of the Granite Belt,
Lorene Long

Activity: Hiking the Himalayas.

Trek: The Warrumbungles, April 27 to May 7

Trek: Adelaide and Kangaroo Island, 9 – 26
October

The Royal Geographical Society of Queensland Inc
"Gregory House," 237 Milton Road, Milton Q 4064

POSTAGE
PAID
AUSTRALIA