



RGSQ Bulletin

ISSN 1832-8830

August 2017

Vol 52 no 7

Published by The Royal Geographical Society of Queensland Inc., a not-for-profit organisation established in 1885 that promotes the study of geography and encourages a greater understanding and enjoyment of the world around us.

Patron: [H.E. Paul de Jersey AC, Governor of Queensland](#)

President: Professor James Shulmeister

From the President

Dear members it is another incredibly busy month coming up at RGSQ. This month's speaker is Dr Peter Griggs who will give a lecture on the history of Australia's love affair with tea. It is a love affair that has chilled somewhat recently with the rise of a strong coffee culture but it epitomises traditional Australia. It promises to be an interesting evening and I encourage everyone to come along. Also coming up in August is an exciting trip to Fraser (K'gari) with Mike West. That trip promises to be a great one as Mike is both passionate, and has huge knowledge, about Fraser Island. Unfortunately, the trip is fully subscribed but Fraser/K'gari is such an important regional site, and has so much to offer, that I hope we can organise another trip there in the near future. Two other events are still available to members to attend. On July 26th, we have a day activity on the Rocks and Coals of the Ipswich Basin and on August 7th the map group is running a presentation on the use of drones (at 10 am at Gregory House).

I gave the second of the RGSQ lecture series at Sippy Downs late last month. The lecture was again very well attended and I would personally like to thank all the members who drove up from Brisbane to attend. I had a hard act following Adrian McCallum's extraordinary adventures at the Poles but, at least, people said nice things to me after the lecture. Anyway, the baton is now passing to our Executive Officer, Bernard, who has generously (foolishly?) offered to give the 3rd talk in our series on the Sunshine Coast on September 19th on the gold rush at Gympie. I will highlight that talk in the next newsletter but I encourage you to mark the date in your calendar and to come along. This series has gotten off to a great start and with the help of local members on the Sunshine Coast we are very hopeful that we can embed Sunshine Coast activities and lectures into the society's program on a long-term basis. A special thank you to Jen Carter who has been critical to helping organise the venue at the USC and is helping take a lead on Sunshine Coast activities.

On the wider front, we had the Institute of Australian Geographers annual conference at UQ. Two council members, Iraphne Childs and I were involved in the organisation, while member Dr Thomas Sigler was the Chair and driving force behind the conference. Iraphne organised RGSQ members to attend one of the conference field trips and RGSQ members were an important part of the fieldtrip. By all accounts the conference which was themed

'Geography Counts' (note the bad attempt at double entendre) was a huge success with about 300 delegates enthusiastically participating. Unfortunately, an early season flu limited my participation to only those sessions where my attendance was required but it was good fun.

Two other activities of the Society that you may not be aware of are, firstly, the publication of the volume from the Pungalina expedition. This turned out to be a major undertaking and I would like to thank Margaret Keates for taking the lead on this and getting us across the finish line. The volume will shortly be available for download from the society's website - most likely in two forms, a low-resolution version that won't kill the NBN and a high res version that just might! Watch our web page for this.

The second development is that in the future the Society is intending to 'badge' its international travel offerings under the 'RGSQ Traveller' banner. This is part of an initiative led by Leo Scanlan to develop our international travel offerings. This is a slow burner but we are hoping to gradually increase both the range of trips we offer and to increase the geographical component of the trips (without turning them into something drily academic). Please watch this space.

Jamie Shulmeister, President



If you missed Jamie's lecture at the University of the Sunshine Coast, a recording has been made available by the USC and can be accessed here:

<https://mediasite.usc.edu.au/Mediasite/Play/cf380808095c441faa47b8312b22a6fa1d>

WELCOME NEW MEMBERS

We have much pleasure in welcoming *Mr Michael* and *Mrs. Linda West* as new members. We hope your association with your new Society is long and mutually enjoyable.

RGQS COUNCIL

President: Jamie Shulmeister
Vice Presidents: Dal Anderson
Iraphne Childs
Secretary: Margaret McIvor
Treasurer: Chris Spriggs
Councillors: Bob Abnett
Paul Broad
Tony Hillier
Margaret Keates
John Nowill
Leo Scanlan
Kathryn Scott

CONTRIBUTORS

Bob Abnett
David Carstens
Bernard Fitzpatrick
Peter Griggs
Audrey Johnston
Jeanette Lamont
Peter Lloyd
John McWatters
Kay Rees
Graham Rees
Leo Scanlan
Jamie Shulmeister
Photography:
Kay Rees, Leo Scanlan,
Bernard Fitzpatrick, Margaret
Keates, Peter Lloyd, Jenman
African Safaris.

LECTURE OF THE MONTH

**"The cups that cheer but
not inebriate: Australia's
love affair with tea"**

by Dr Peter Griggs

Tue August 1, 7:30 pm

"Gregory House"

237 Milton Rd, Milton



**HAVE A
TEA·IN**

Between 1860 and 1950, Australians were the highest, then second highest consumers of tea per person globally. Tea was never grown commercially in Australia until the 1970s, so the 55-60 million pounds (25-27 million kilograms) of tea that was consumed annually by Australians by the 1950s and 1960s had to be imported, overwhelmingly from Asia. This extensive trade in tea from the 1820s onwards had developed linkages between Australia and Asia, long before Prime Minister Gough Whitlam visited China in the early 1970s.

The presentation will consider the following: why Australians consumed so much tea; why it fell out of favour during the period 1960 -1980 (although making a comeback now as a trendy beverage); changing source regions for Australia's tea imports; those firms and individuals who kept Australians supplied with their favourite beverage (e.g. Bushell family; James Inglis who created Billy Tea; Robur Tea Co.; Lan-Choo Tea Co.); and the growth of Australia's commercial black and green tea industries, pioneered by Dr Alan Maruf who established Nerada Tea plantation near Innisfail.

Presenter *Dr Peter Griggs* is a historical geographer interested in agriculture and environmental history. He has published extensively on the Australian sugar industry. In 2014, he was a Harold White Research Fellow at the National Library of Australia and is currently converting that research into a book on the economic and historical geography of tea in Australia since 1788. He is also the author of the Society's centennial history, *A Dream in Trust*.

Image: *Source: Tea Council of Australia Annual Reports, National Library of Australia.* One of the advertising posters produced by the Tea Council of Australia in the early 1970s. The Tea Council of Australia sought to reverse the decline in tea consumption in Australia by targeting under 30-year-old Australians who increasingly shunned tea in preference to coffee and sweetened drinks. The campaigns failed, and Australian tea consumption continued to fall during the 1970s and 1980s.

SEPTEMBER LECTURE ON THE SUNSHINE COAST "Gympie Gold and Queensland"

*by Bernard Fitzpatrick, the Royal Geographical Society of
Queensland*

Tue June 26, 7:15 pm – 9 pm

at the University of the Sunshine Coast

Special RGSQ Lecture organised in association with the University of the Sunshine Coast. **Venue: tba**

Within ten years of becoming an independent colony of the British Empire in 1859, the Colony of Queensland was in financial hardship. In January 1867, the Queensland Government responded by announcing a reward for the discovery of a new gold field.

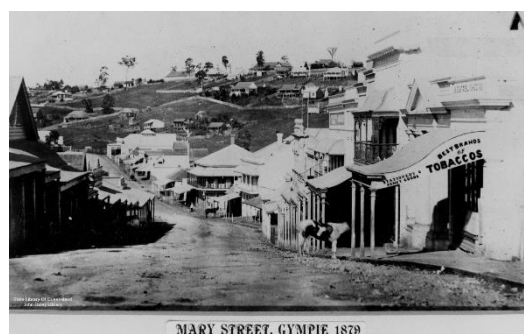
In a gully to the east of the Mary River, James Nash discovered alluvial gold in September 1867. On registering the find in Maryborough in October 1867 a rush to the new gold field began. A settlement, later named Gympie, sprang up along the small watercourse.

Gympie would become known as "the town that saved Queensland" and gold continued to be mined in the Gympie area until the 1920s. Gympie has become the regional centre of the Mary River Valley agricultural district and in 2016, the Local Government Area contributed around two billion dollars to the Queensland economy. The presentation follows the progress of the Mary River Valley region from its golden days in the mid to late 1800s.

Presenter

Bernard Fitzpatrick is a geographer with a strong interest in regional geography. Since 1980 he has worked in the areas of cartography, mapping, remote sensing, and spatial analysis associated with natural resource management, agriculture and forestry, undertaking projects over various locations in Australia, Sumatra, and Southern Sudan before becoming the RGSQ Executive Officer in 2014.

Bernard has a personal connection to Gympie through various branches of his family, which have had an association with Gympie since at least 1869.



*Photo: Mary
Street, Gympie
1879, courtesy
of State Library
of Queensland.*



*Photo: Mary
Street,
Gympie, 2017.
Courtesy of
Bernard
Fitzpatrick.*

SYNOPSIS

July Lecture “Indigenous participation in regional planning” by Dr Cathy Robinson.

Synopsis by David Carstens, RGSQ member



Photo: Question time after the July lecture presentation at RGSQ. Courtesy of Kay Rees.

At the scheduled lecture at the RGSQ Auditorium on Tuesday 4 July 2017, Dr Cathy Robinson provided an enthusiastic outline and background of the positive work and development of Aboriginal communities carried out in Australia, and especially in Northern Australia. In her capacity as a Geographer with CSIRO, the audience was made aware of important issues concerning management of traditional land, food sources and the shared responsibilities which apply.

Dr Cathy introduced and explained the concept of Human Geography and how she applied her most active interaction with communities, tapping into the traditional background of the community. The description of methods and the experience of interaction with communities, was most informative. From traditional sit-down gatherings under a tree to bouncing around in the back of a utility travelling through ‘Country’, Dr Cathy described how she carried out her field studies. This included other parts of Australia and overseas study.

Of three million square kilometres of northern Australia, forty-eight percent is subject to Native Title and land rights. This includes both land and coastal management.

As stated in the RGSQ Bulletin announcing this Lecture, Dr. Cathy is the Research Director for the Northern Alliance - a collaborative research partnerships between CSIRO and Northern Institute (CDU) that is focused on building total system health approaches around Northern Australian development and her papers published in the CSIRO Journal are accessed at <http://bit.ly/2nifnDq> and <http://bit.ly/2nNneNm> give the results of the studies. The lecture provided the story of her field work and interaction, gaining the cooperation interest and understanding of the communities.

“This lecture was one of the positive contributions which the RGSQ makes in providing a public forum for geographical information.”

The highlight was to hear Dr Cathy, modestly outline the positive results achieved.

The public tend to perceive much negative information about Indigenous Affairs. Mass media so frequently publish the reports which question the effectiveness and implementation of projects to

the exclusion of the positives which have been achieved over the decades.

Dr Cathy outlined how consensus and understanding of belief systems was important in community consultation. It was interesting to hear that buffalo has become a totem animal as a convenient food source. It is necessary to balance the need to control the environmental damage from this introduced feral animal with its perceived value as a food source.

Management of Dugong as a food source compared with a need for conservation was highlighted as was the traditional use of fire in controlling weed growth and feral animal pests.

The Society’s Archive Group

By Peter Lloyd, former RGSQ President and current RSGQ member

Earlier this year a few members started looking into the Society’s archives. Leading the team is Dr Peter Griggs who compiled the Society’s centenary history *A Dream in Trust* and who recently returned to Brisbane after 25 years lecturing at JCU Cairns campus. Other members are Myrl Alison who was the Society librarian in the mid-1980s and a trained archivist, Peter Lloyd who was President 1987-9 and, recent member, retired teacher-librarian Mike Piccolo.

Firstly, material previously archived is being checked against database records and this has already uncovered some interesting aspects of the Society’s history. A recent find is the Centenary logo that was used for publishing by the Society and its many Centenary celebrations and activities.



The logo was the winning design from a competition organised among their students by the then Seven Hills College of Art. Joanne Reid won the \$100 prize for her design. When presenting the prize in 1983 President Ken Sutton said: “the logo had to embody the concept of man and his world as well as be suitable to act as a sticker on envelopes and versatile enough to be emblazoned on banners and expedition trucks without losing its impact”. RGSA(Q) Bulletin Vol 18 No 5 June 1983 pp13,14.

Curiously, the logo does not mention the “Queensland” component of the Society’s name at the time, just the Royal Geographical Society of Australasia (RGSA). This could have the following explanation.

Ken Sutton was very keen to use the opportunity of the Centenary to try to reinvigorate the RGSA which, by the 1980s, had been reduced to only two independent branches, Queensland and South Australia. Both surviving branches were founded on 10 July 1885 so the logo could be used for joint activities with the South Australian Branch. However, Ken’s sudden death in 1986, along with the founding of the Australian Geographic Society in the same year, meant that his dream of a new national RGSA did not become a reality and the logo did not persist.

Finding this curiosity from over thirty years ago has a more modern resonance as apparently there are suggestions circulating within the Society that the current logo is archaic and is due for updating for a new era.

If any member would like to join the Archive Group and unearth other fascinating and challenging discoveries please contact the RGSQ Office at 07 3368 2066.

UPCOMING EVENTS

JULY: ROCKS AND COALS OF THE IPSWICH BASIN

Wed July 26

Cost: \$55 members, \$58 non-members and includes morning tea and lunch.

The bus will depart at 07:30 am from the bus stop in Park Rd at the Eagle Junction Railway Station; return drop off is expected before 17:00. There is plenty of all day street parking in the area.

RSVP: Fri July 14, to book and pay please contact the RGSQ office on 07 3368 2066.

For further information about the trip, please contact

GrahamRees@wombatshollow.com.

Much of the geography of SE Queensland is written in the 400 M year geology of the region. Warwick Willmott and David Trezise of the Geological Society of Australia will guide us through the formation of the Ipswich area in late Triassic period of around 200 M years ago. Members will recall that Warwick has delivered a number of fascinating lectures at RGSQ and has edited a number of publications of the Geological Society, including "Rocks and Landscapes of Brisbane and Ipswich", which will be available for purchase on the day for \$20. **Coordinator: Graham Rees**

AUGUST: DAY TRIP GOLD COAST WATERWAYS

SUSTAIN AND ENHANCE

Thursday 3 August

Have you ever wondered how the sand moves along the Eastern coastline and the problems caused for safe waterways and beaches? Join us as we:

- *Evaluate the solution of the Sand By Pass system with training walls at the Nerang and Tweed Rivers*
- *Understand the creation of Wave Break Island*
- *See the location of the Artificial Reef at Narrownneck*

Cost: \$40 members \$45 nonmembers includes Morning Tea

Lunch: Beachfront at Burleigh Heads Surf Club Cafe This is **not** included in cost. There is a choice of sandwiches, fish and chips/salad, hamburgers etc. with drink allow \$12 or BYO.

Depart: 7.30am Park Road Opp Eagle Junction Railway Station Redcliffe Coaches, 8.00am Park and Ride Mains Road Nathan behind QE2.

Return: Approximately 4.30pm at Park and Ride 5.00pm Eagle Junction

To Book contact RGSQ office on 07 3368 2066, **please indicate pick up location.**

RSVP: July 20

In memory of Brian McGrath 23.2.37 to 4.8.16

Brian McGrath was working for State Govt's Coordinator Generals Dept in 1965-1967 when the Gold Coast beaches became very badly eroded. He contacted the Delft Hydraulic Laboratory in Holland who sent out Mr Rudi Diephuis. Brian and Rudi walked the coast from the Broadwater to Tweed Heads, camping/motels at night. A 3-year investigation program was set up with coloured sand, depths from 25m boat and wave riders on coast to measure wave height and where the sand travelled. The sand moved in and out between the sand dunes and offshore bar and northwards from New South Wales, 500,000 cubic metres per year with longshore drift. The sand disappears north of Fraser Island into a black hole.

In 1969 Brian and Heather flew to Holland and worked with Delft Hyd. for 16 months to produce the Delft Report which was presented to Old State Govt in 1976. The Nerang, and later Tweed River, bypass was approved. Training walls were built to stabilize the River mouths and create safer waterways. The Beach Protection Authority was created to stabilize sand dunes with vegetation GCC Council has now taken over the beach replenishment. Special thanks to Heather McGrath for this background information. **Coordinator: Jeanette Lamont**

SEPTEMBER: VISIT TO THE BRISBANE TRAMWAY MUSEUM

Wed 6 September

Cost: \$40 members \$43 non-members

RSVP: by Tuesday 29 August to RGSQ Office.

Who doesn't remember riding on a rattly Brisbane tram?

Would you like to ride on one again to relive those memories? Well then, join us for a tour of The Brisbane Tramway Museum. The Museum has been operational since 1980 and is run entirely by volunteers who make a visit fun & informative.

We will meet at 10am at the Museum for Morning Tea before commencing the tour at 10:30am.



Photo courtesy of Kay Rees

Following on the tour, we will make our way to the adjoining Ferny Grove Bowls Club for lunch.

Location: The Museum is located at **50 Tramway St, Ferny Grove QLD 4055** and is approximately a 25-minute drive from RGSQ north-west via The Gap, Ashgrove or Mitchelton. There is plenty of free parking. The closest railway station is Ferny Grove and it is a 10 minute, 700 metres walk. We can arrange to pick up anyone from the station (prior to 9:45am) and drop them back for a return train.

Coordinator: Kay Rees

SEPTEMBER: TOTEMS AND A TEMPLE

Thursday 21 September



Photo courtesy of Audrey Johnston.

WHAT: a morning walk through the Boondall Wetlands to view the aboriginal totems along the track. It is about a 2km, flat walk on a well-made track winding its way through the wetlands, with the possibility of a short detour to a bird hide beside Nundah Creek.

Each totem has a different story, e.g. kula represents a stingless bee, chagrine is an eel, Kabul, the carpet python while Bingen - represents turtles. The local indigenous people, the Morris, ate the short necked but not the long-necked turtles which bred in the swamps. Apparently, the meat is very tasty. You might like to pop into the Information Centre to collect a brochure about the totems.

Enjoy a BYO lunch in the picnic area.

Be SunSmart, wear walking shoes, bring a water bottle and a camera.

Then travel to the Taoist Temple at Deagon for a guided tour. Taoism is an ancient Chinese religion that originated 4,700 years ago. Built in 1991, this is the largest Taoist Temple in the Southern Hemisphere. Teen How is the Goddess of Heaven and Goddess of the Sea, while Wong is the Shepherd Saint. Both are worshipped by millions of Chinese throughout the world.

- **LOCATION:** Boondall Wetlands

From Sandgate Road, Boondall, follow Stanworth Road, which becomes Bicentennial Road, drive under the motorway and follow the signs to the Information Centre.

- **MEET** at the Information Centre by 9.30am for a 9.45am start.

Following lunch continue along Sandgate Road to Depot Road to the Temple at 41 Depot Road. It is on the right-hand side of the road. There is parking at the back.

- **ARRIVE** at the Temple by 1.30 for a 1.45 start.

Cost of \$5.00 is a donation to the Temple.

Book with the RGSQ Office and **pay by** 15 September.

IF IT IS WET WE WILL CANCEL THE WETLANDS WALK AND MEET AT THE TEMPLE by 1.30pm.

Please do not hesitate to contact Audrey Johnston, Trip Coordinator, on 07 3283 4494 or 0438 159 218.

Audrey Johnston: Trip Coordinator

OCTOBER: SOUTHERN MORETON BAY ISLANDS TRIP **Thursday 26 October**

Cost: members \$15; non-members \$18

Book and **pay** with the RGSQ office at 07 3368 2066 by September 15th

Lunch at the RSL and the cost of ferries is at the participants' own expense.

Somewhat less visited than the tourist oriented North and South Stradbroke Islands are the four 'residential' islands of southern Moreton Bay - Russell and Macleay, each with populations of around 2,500 and Lamb and Karragarra which each have less than 500 residents. The best known island is Russell probably as a result of the (in)famous land scam of the 1970s based partly on the rumour of a bridge from the mainland.

The islands are linked with each other and the mainland by a ferry service which operates from Redland Bay Ferry Terminal. The ferry operates within the Translink system and therefore offers Gocard convenience at reasonable rates.

The ferry services I've selected - 10.30 am out and 2.35 pm return - are scheduled to stop at all of the islands but we will disembark only on Russell, the largest, for a commented bus tour of the island and lunch at the RSL. These times are necessary so we can make use of the island's school bus (air conditioned, full size) outside its normal hours of operation and so that the ferries will not be crowded with students and commuters in either direction. The ferry arrives back in Redland Bay at 3.06 pm.

Free off-street parking is available close to the ferry terminal. Some upgrading work is being conducted throughout this year in the carpark so I've been advised that it's wise to arrive by 10 am especially as these ferries wait for no-one. (I had no trouble finding a park during a recent trial run however.) The terminal is also serviced by buses from Brisbane (see the Translink Journey Planner).

Redland Bay Ferry Terminal is off Banana Street. UBD Map 226 Ref 17P. **John McWatters, Trip Coordinator**

SPECIAL INTEREST GROUPS

KEN SUTTON

MEMORIAL LIBRARY GROUP

When: Monday, August 28, 2017

Time: 9:00 am

Where: "Gregory House", 237 Milton Rd.



MAP GROUP

UPCOMING MAP GROUP GATHERINGS & EVENTS

August, 2017 - Gathering:

- **Monday 7 August: 10am to 12 noon.** Auditorium, Gregory House.
 - **Presentation:** Speaker/Topic: Mark Hickey - "Using Drones for Mapping & Understanding Every Day Use and Safety of Drones". Display drones will also be on show.
 - **Gathering:** Major Item: Draft 2018 Program

September, 2017 - Events:

- **RGSQ AGM - Tuesday evening, 19 September, 2017: Map Library Sub-Group Map Display.**
 - Map Library Sub-Group has agreed to mount a Map Display. Details of the Display will be determined closer to the event (August Gathering).
- **"Show and Tell" - Wednesday, 20 September, 2017: 10am to 12 noon/thereabouts.**
 - **Venue:** Auditorium, Gregory House, 237 Milton Road, Milton.
 - **Morning Tea:** 11am. Map Group members to bring biscuits.

October, 2017 - Gathering & External Event:

- **Monday, 9 October: 10am to 12 noon.** Auditorium, Gregory House.
 - **Presentation:** Speaker/Topic: Peter Lloyd - "Thematic Mapping - 50 Years Ago".
 - **Gathering:** General Items about remainder of 2017 Program.



**Join RGSQ in 2018 for the journey of a lifetime to South
Africa, Botswana and Zimbabwe.
25-day trek across 3 countries
SOUTH AFRICA, BOTSWANA AND ZIMBABWE**



An Eye on Southern Africa

Highlights: Southern Drakensberg, Golden Gate Highlands National Park, KwaZulu Natal Battlefields, Hluhluwe, Hlane Royal National Park, Hazyview, Soutpansberg Mountain Range, Great Zimbabwe Ruins, Matobo National Park, Gweta, Maun, Moremi Game Reserve, Chobe River Front, Hwange National Park and Victoria Falls.

TO REGISTER YOUR INTEREST: Numbers are limited so if you are interested in participating, please contact Leo Scanlan, the Tour Coordinator and Leader at [07 3343 4398](tel:0733434398) or email at trekabout1@gmail.com to register your interest.

Inclusions: •International + Internal Domestic Flights in Africa •Accommodation and Transport •All meals •Fully escorted from Brisbane •Guided Site Tours + 4x4 Excursions in National Parks.

ITINERARY "AN EYE ON SOUTHERN AFRICA"

B - breakfast, L - lunch, D - dinner

- **Day 1** Brisbane Airport Depart **21 April 2018**
- **Day 2** Durban South Africa LD **22 April 2018**
Arrival at airport & transfer to **hotel**; meet & greet. **Accommodation:** Gateway Hotel Umhlanga.
- **Day 3** Southern Drakensberg BLD **23 April 2018, 2 nights**
Durban City tour. Lunch is prepared en route possibly in Pietermaritzburg (time dependent). **Accommodation:** Drakensberg Gardens Golf and Spa Resort.
- **Day 4** Southern Drakensberg BLD **24 April 2018**
Full Day Sani Pass & Lesotho Tour: Take an exciting 4x4 drive up the Sani Pass, the highest road pass in Africa. Enter the Kingdom of Lesotho and visit a nearby Sotho village. Light lunch (included) at the highest pub in Africa, with its incredible views. **Accommodation:** Drakensberg Gardens Golf and Spa Resort.
- **Day 5** Golden Gate Highlands National Park BLD **25 April 2018, 1 night**
Afternoon visit to the **Brandwag Butress** & have a short hike (approx. 1 hr or less). Lunch en route prepared by crew. **Accommodation:** Basotho Cultural Village Rest Camp.
- **Day 6** KwaZulu Natal Battlefields BLD **26 April 2018, 1 night**
Zululand Battlefields excursion visiting: **Spion Kop, Rorke's Drift & Isandlwana** (escorted by a battlefields guide). Spion Cop, Anglo Boer War; Rorke's Drift and Isandlwana, Anglo Zulu War. Lunch en route prepared by crew. **Accommodation:** Battlefields Country Lodge.
- **Day 7** Hluhluwe BLD **27 April 2018, 1 night**
Enroute visit **St Lucia-iSimangaliso Wetland Park** for a guided St Lucia estuary boat trip and optional walk on the Indian Ocean

beach. Lunch en route prepared by crew. **Accommodation:** Ezulwini Game Lodge.

- **Day 8** Hlane Royal National Park BLD **28 April 2018, 1 night**
Lunch en route prepared by crew. **Accommodation:** Ndlovu Camp.
- **Day 9** Hazyview BLD **29 April 2018, 2 nights**
Morning **Umphakatsi** Experience (a visit to a Swazi Chief's homestead). Lunch en route prepared by crew. **Accommodation:** Casa Do Sol.
- **Day 10** Hazyview BLD **30 April 2018**
Central Kruger Lunch en route prepared by crew. **Accommodation:** Casa Do Sol.
- **Day 11** Soutpansberg Mountain Range BLD **1 May 2018, 1 night**
Blyde River Canyon Lunch en route prepared by crew. **Accommodation:** Mashovhela Bush Lodge and Drumbeat Restaurant.
- **Day 12** Great Zimbabwe Ruins BLD **2 May 2018, 1 night**
For the **South Africa and Zimbabwe border post** (expect approx. 2 hrs delays at border post). Lunch en route prepared by crew. Short stops enroute (time permitting). **Accommodation:** Lodge at the Ancient City.



- **Day 13** Matobo National Park BLD **3 May 2018, 2 nights**
Great Zimbabwe ruins. Lunch en route prepared by crew.
Accommodation: Big Cave Camp.
- **Day 14** Matobo National Park BLD **4 May 2018**
Rhino walk. Grave Cecil John Rhodes. Lunch en route prepared by crew. **Accommodation: Big Cave Camp.**
- **Day 15** Gweta BLD **5 May 2018, 2 nights**
Nata Bird Sanctuary. Planet Baobab guided walks.
Accommodation: Planet Baobab.
- **Day 16** Gweta BLD **6 May 2018**
Ntsetwe Pan Expedition Today we visit the **Ntsetwe Pan** for a morning excursion and later we learn about cattle trading in this region, and finally we visit a local community that call the vicinity of the **Magadikgadi Salt Pan** home. Lunch en route prepared by crew. **Accommodation: Planet Baobab.**
- **Day 17** Maun BLD **7 May 2018, 1 night**
Transit to Maun. **Optional Okavango** scenic flights. Lunch en route prepared by crew. **Accommodation: Thamalakane Riverlodge.**
- **Day 18** Moremi Game Reserve BLD **8 May 2018, 2 nights**
Depart Maun in the late morning on safari vehicles heading to **Moremi/Khwai Game Reserves** (NB: group to be split into 12 seated safari vehicles). Game driving to the lodge and enjoy sunset at the lodge. Lunch en route prepared by crew.
Accommodation: Mankwe Bush Lodge.
- **Day 19** Moremi Game Reserve BLD **9 May 2018**
Moremi Game Reserve. Lunch en route prepared by crew.
Accommodation: Mankwe Bush Lodge.



The amazing foresight of Chief Moremi created one of the world's most famous reserves, conserving part of the Okavango Delta and the plains to its east. The reserve covers more than 4871 square kilometres of pristine wilderness, and the varied terrain includes savannah, winding waterways, and thick forest.

- **Day 20** Chobe Riverfront BLD **10 May 2018, 2 nights**
A short drive northwards we arrive in Kasane, the gateway to Chobe National Park. **Chobe River Cruise.** Lunch en route prepared by crew. **Accommodation: Chobe Marina Lodge.**
- **Day 21** Chobe River Front BLD **11 May 2018**
Chobe National Park Game Viewing. **Accommodation: Chobe Marina Lodge.**



- **Day 22** Hwange National Park BLD; **12 May 2018, 2 nights**
Hwange National Park. Optional game drive by the lodge in the afternoon.
Accommodation: Sable Sands.

- **Day 23** Hwange National Park BLD **13 May 2018**
Hwange National Park. Packed lunch during game drives.
Accommodation: Sable Sands.
- **Day 24** Victoria Falls Zimbabwe BLD **14 May 2018, 1 night**
In Transit to **Victoria Falls.** **Shearwater** guided tour of the Falls. **Victoria Falls Hotel High Tea** on the veranda. **Optional** helicopter flight over **Victoria Falls.** **Accommodation: Victoria Falls Hotel.**
- **Day 25** Victoria Falls/Johannesburg B **15 May 2018**
- **16 May 2018** **Arrive in Australia**

Photos courtesy of Jenman African Safaris. *Whilst every effort has been made to ensure the accuracy of information in the itinerary at the time of publication, RGSQ cannot accept responsibility for the errors, changes, omissions or for descriptions which have been supplied by third party providers.*

An RGSQ Trek in association with Jenman African Safaris.



JENMAN
AFRICAN SAFARIS

From the MAP GROUP

Joint Map Group/MSIA Evening Event Report

This Event was the first joint function with another mapping organisation (MSIA - Mapping Sciences Institute, Australia - Queensland Branch); and 17 attendees made the night, after a few had to drop out due to a range of reasons.

It was an eventful night with 3 separate displays of maps and 5 presentations.

The Evening Program:

Map Displays:

- *Map Library Display* - excellent and it had more historic and rare maps on show.
- *Historic 4 Map Display of Australia from 1550 to 1851* - it complimented a Presentation by Les Isdale, and generated a lot of interest.
- *Physical Visualization Globes Display* - like an analogue GIS display; brought to the Event by Lynn Moorman, the Canadian currently visiting Brisbane and attending RGSQ activities. There were two curved structures with aerial images of Western Canada/USA and Eastern Australia, and they also attracted a lot of interest.

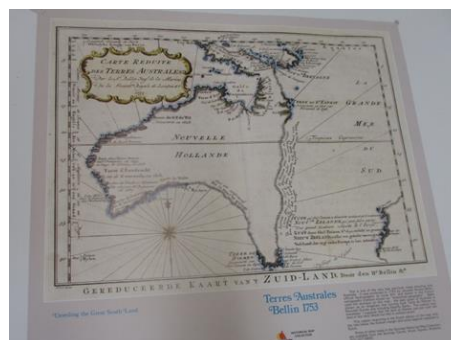


Photo: 1753 Map of Australia - 17 years before Cook mapped the East Coast of Australia. Source: RGSQ map collection.

Presentations:

MSIA: These covered two presentations by John McCormack on what DNRM is doing regarding:

- *The Queensland Globe* - an on-line mapping system of Queensland with multiple layers of information about Queensland for the public to access;
- *Q Imagery* - a recent addition to DNRM's publically accessible on-line maps - it encompassed a time series of aerial photos across Queensland from the 1930s to the current era. This new aerial photo product will come in very handy with Map Group's Nundah Mapping Project.

Joint MSIA/Map Group: These covered two presentations by Les Isdale, a member of both groups attending the night.

- *Historical Facsimile Map Series: Australia 1550 to 1851* - published by DNRM. Les explained the background to each map and how significant they were in terms of the mapping history of Australia.
- *Recent Enhancements to the Map Catalogue at Queensland State Archives.* Les Isdale was a volunteer at State Archives during 2016 and explained how he enhanced the Archives Map Catalogue, so users of State Archive's 200,000 maps can achieve better access to them. He indicated a lot more work is required to increase the effective coverage of the Map Collection Catalogue.

Map Group: Bob Abnett, Co-ordinator of Map Group, made a brief presentation on *What Does Map Group Do?* This was aimed at the visitors and RGSQ members attending.



Photo: RGSQ members during the mail out of the 2017 AGC Certificates to all participating students in year 7-12 across Australian secondary schools.

2017 AGC Mailout - THANK YOU The 2017 Australian Geography Competition

The last mail out for the 2017 Australian Geography Competition was undertaken on Tuesday 11th and Wednesday 12th July. I would like to thank RGSQ members who were a great assistance on both days: Ian Francis, June Hethorn, John and Mary Nowill, Graham and Kay Rees, John Walker, and John Wilkinson. Over the two days, RGSQ members helped sort, pack and, dispatch over 124,500 sheets of paper consisting of certificates and results to over 62,000 students and over 700 schools. Also, thank you to those who put their names down to assist on Thursday and Friday, but were not required.

RGSQ Bulletin

August 2017

Lecture of the Month: Tue August 1

"The cups that cheer but not inebriate" by Dr Peter Griggs

Sunshine Coast Lecture: Tue 26 September

"Gympie Gold and Queensland" by Bernard Fitzpatrick

Tours and Activities: Thu August 3 Gold Coast Waterways – Sustain & Enhance; Wed Aug 23 – Mon 28 Fraser Island trek

Map Group: Mon 7 Aug, 10 am "Gregory House", 237 Milton Rd, Milton. **Event - "Using Drones for Mapping & Understanding Every Day Use and Safety of Drones"**, presented by Mark Hickey.

Ken Sutton Memorial Library: Mon Aug 28, 9:00am, "Gregory House", 237 Milton Rd, Milton.

Council meetings are held on the second Tuesday of each month.

The Royal Geographical Society of Queensland Inc
"Gregory House", 237 Milton Road, Milton Q 4064

POSTAGE
PAID
AUSTRALIA