



# RGSQ Bulletin

October 2017

ISSN 1832-8830

Vol 52 no 9

Published by The Royal Geographical Society of Queensland Inc., a not-for-profit organisation established in 1885 that promotes the study of geography and encourages a greater understanding and enjoyment of the world around us.

Patron: [H.E. Paul de Jersey AC, Governor of Queensland](#)

President: Professor James Shulmeister

## ■ From the Outgoing President

Dear members, I would like to thank those who attended the AGM on the 19<sup>th</sup> of September. It has been a big year for the RGSQ with a whole series of major decisions and new initiatives. One of the biggest decisions is highlighted below.

There is some very notable society news this month. The Society has been based at Milton Road for about 15 years. The venue has served us very well with the auditorium and good office space. The building was already a relatively old building when we moved to it and the council has been aware that there were major expenses in the offing for the building with new roof, air conditioning system and other major refurbishments needed in the next few years. In addition, we have been unable to rent our office space at commercial rates for several years and we now have no tenants. This reflected both market conditions but also some serious limitations of the office space. We had been looking to start a substantial renovation program that would have cost several hundred thousand dollars. A few months ago we were approached by one of our neighbours who is looking to expand his business. He has made an offer for the building which is full market value (for our building in good condition) and in well excess of what the council thinks we would get if we went to an open market. This gave us an alternative scenario to consider. After much discussion, the council has voted to accept the offer. The building still needs to pass building inspection so the sale is not fully guaranteed but in all likelihood, this will be the Society's final year at Milton Road. We will be able to lease back the building (but not the auditorium) in the short to medium term 6-18 months. The council has an option for an immediate move in the Milton area but the council wants to examine a wider range of options on the forward move.

In the wider world, the big events of the month are the storms in the Caribbean. The number of Hurricanes in the Atlantic in any year is quite variable and though it was spectacular to look at having three storms simultaneously, it was merely coincidental. In fact, we have gone through a phase of rather low hurricane activity in this region over the last decade or so. What was truly unusual was the intensity of the two Atlantic (as opposed to Gulf of Mexico) storms. The strength of Hurricanes (Cyclones) is directly related to the temperature of the sea-surface. While closed seas like the Gulf of Mexico can really warm up, open ocean areas usually don't get so hot. In this case warmer than average waters in the Atlantic east of the Caribbean allowed the storms (Irma and Jose) to ramp up to Categories 5 and 4 respectively. This is highly unusual and Irma was the strongest hurricane in about 100 years in this part of the Ocean.

The water temperature on paper is not much warmer than normal (in the order of a degree) but that small change in water temperature reflects a massive increase in energy. Just over 4 Joules of energy (1 calorie) is required to heat a gram of water by 1°C. 1 cubic metre of water is a metric ton or 1,000,000 calories. If we average an area of 500 km long by 200 km wide and 100 m deep as having a water 1°C warmer than average that gives 10,000 cubic kilometres of warmer water. A cubic kilometre is a thousand million cubic metres (1,000m x 1,000m x 1,000m = 1,000,000,000m<sup>3</sup>) so the additional heat in this section of the Atlantic was at least 1,000,000,000,000,000 (one thousand billion extra calories = a quadrillion) and these are conservative estimates. The Hurricanes are the climatic equivalent of a crash diet as you get rid of all those stored up calories. That was

why the storms were so powerful. Were the storms natural? Yes. Was the intensity of Irma (and Jose) increased by anthropogenic warming ...Yes. Be aware also that damage from wind is a power (a square or cubic) function of the wind speed. What this means is that a relatively small increase in wind speed equates to much more damage on the ground. Have a look at some of the damage on the smaller Caribbean islands that bore the brunt of the storm. Worth thinking about.

*James Shulmeister, Outgoing President*

## 2017-2018 RGSQ Council

At the Annual General Meeting held on 19 September 2017 the following members were elected to the Council:

<i>President:</i>	Iraphne Childs
<i>Vice Presidents:</i>	Margaret Keates Peter Griggs
<i>Secretary:</i>	Margaret McIvor
<i>Treasurer:</i>	Chris Spriggs
<i>Councillors:</i>	Bob Abnett Paul Broad Jennifer Carter Duncan Cook Ian Francis John Nowill Leo Scanlan James Shulmeister

**Note:** Outgoing President James Shulmeister wrote to advise, with much regret, that he was withdrawing his nomination for the Society President due to heavy workload and competing commitments at the University of Qld. Jamie felt he was unable to discharge his duties as President to his satisfaction and as the Society deserved. Following a ballot, Iraphne Childs was elected as incoming President.

## WELCOME NEW MEMBERS

We have much pleasure in welcoming *Mr Duncan Cook* and *Mr Paul* and *Mrs Choi Moi Ingleton* as new members. We hope your association with your new Society is long and mutually enjoyable.

## FROM THE 19 SEPTEMBER AGM L-R:

- 'Puzzles in Maps' - Where is it?;
- 'Gympie Gold and Queensland' - brief presentation by Bernard Fitzpatrick, RGSQ Executive Officer with the full lecture to be delivered at the USC on the 26<sup>th</sup> of September (details in the Bulletin);
- Incoming President - Iraphne Childs with outgoing President - James Shulmeister.



#### CONTRIBUTORS

Bob Abnett  
Elin Charles-Edwards  
Bernard Fitzpatrick  
Peter Griggs  
John McWatters  
Ron Owen  
Kay Rees  
Leo Scanlan  
Jamie Shulmeister

#### PHOTOGRAPHY

Bob Abnett  
Elin Charles-Edwards  
Bernard Fitzpatrick  
Ron Owen  
Kay Rees  
Leo Scanlan

### LECTURE OF THE MONTH

#### "GEOGRAPHY MATTERS: THE PAST PRESENT& FUTURE OF CENSUS DATA"

by *Dr Elin Charles-Edwards, University of Queensland*

**Tue October 3, 7:30 pm "Gregory House"**

237 Milton Rd, Milton



The lead-up to 2016 Australian Census was marked by significant controversy, with intense media scrutiny on cyber-security and individual privacy.

In the immediate aftermath, concerns were raised about data quality and the long-term sustainability of the Australian Census.

This talk will delve into the past controversy, examine the present utility of Census data, and speculate on the future of demographic data collection and what this means for geographers.



Screenshot of the 2016 census webpage. Courtesy of Dr Elin Charles-Edwards.

Bio: Dr Elin Charles-Edwards is a lecturer in Human Geography at the University of Queensland. Her research explores migration, mobility and the ways in which populations vary over space and time. She has published widely in academic journals and has undertaken work for the United Nations Population Division and the World Bank providing a global update of internal migration patterns and trends. She loves the Census.

### SEPTEMBER LECTURE ON THE SUNSHINE COAST "Gympie Gold and Queensland"

by *Bernard Fitzpatrick, the Royal Geographical Society of Queensland*

**Tue September 26, 7:15 pm – 9 pm  
at the University of the Sunshine Coast**

Special RGSQ Lecture organised in association with the University of the Sunshine Coast.

**Venue:** Lecture Theatre 2

**For a map of the USC, visit:**

[http://www.usc.edu.au/media/3303/uscmap\\_brochure\\_web.pdf](http://www.usc.edu.au/media/3303/uscmap_brochure_web.pdf)

Within ten years of becoming an independent colony of the British Empire in 1859, the Colony of Queensland was in financial hardship. In January 1867, the Queensland Government responded by announcing a reward for the discovery of a new gold field.

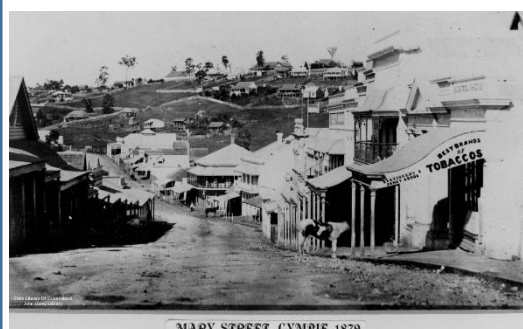
In a gully to the east of the Mary River, James Nash discovered alluvial gold in September 1867. On registering the find in Maryborough in October 1867 a rush to the new gold field began. A settlement, later named Gympie, sprang up along the small watercourse.

Gympie would become known as "the town that saved Queensland" and gold continued to be mined in the Gympie area until the 1920s. Gympie has become the regional centre of the Mary River Valley agricultural district and in 2016, the Local Government Area contributed around two billion dollars to the Queensland economy. The presentation follows the progress of the Mary River Valley region from its golden days in the mid to late 1800s.

#### Presenter

Bernard Fitzpatrick is a geographer with a strong interest in regional geography. Since 1980 he has worked in the areas of cartography, mapping, remote sensing, and spatial analysis associated with natural resource management, agriculture and forestry, undertaking projects over various locations in Australia, Sumatra, and Southern Sudan before becoming the RGSQ Executive Officer in 2014.

Bernard has a personal connection to Gympie through various branches of his family, which have had an association with Gympie since at least 1869.



*Photo: Mary Street, Gympie 1879, courtesy of State Library of Queensland.*



*Photo: Mary Street, Gympie, 2017. Courtesy of Bernard Fitzpatrick.*

## UPCOMING EVENTS

### OCTOBER: SOUTHERN MORETON BAY ISLANDS TRIP Thursday 26 October

**Cost:** members \$15; non-members \$18

**Book and pay** with the RGSQ office at 07 3368 2066 by October 13

**Lunch at the RSL and the cost of ferries is at the participants' own expense.**

Somewhat less visited than the tourist oriented North and South Stradbroke Islands are the four 'residential' islands of southern Moreton Bay - Russell and Macleay, each with populations of around 2,500 and Lamb and Karragarra which each have less than 500 residents. The best known island is Russell probably as a result of the (in)famous land scam of the 1970s based partly on the rumour of a bridge from the mainland.

The islands are linked with each other and the mainland by a ferry service which operates from Redland Bay Ferry Terminal. The ferry operates within the Translink system and therefore offers Gocard convenience at reasonable rates.

The ferry services I've selected - 10.30 am out and 2.35 pm return - are scheduled to stop at all of the islands but we will disembark only on Russell, the largest, for a commented bus tour of the island and lunch at the RSL. These times are necessary so we can make use of the island's school bus (air conditioned, full size) outside its normal hours of operation and so that the ferries will not be crowded with students and commuters in either direction. The ferry arrives back in Redland Bay at 3.06 pm.

Free off-street parking is available close to the ferry terminal. Some upgrading work is being conducted throughout this year in the carpark so I've been advised that it's wise to arrive by 10 am especially as these ferries wait for no-one. (I had no trouble finding a park during a recent trial run however.) The terminal is also serviced by buses from Brisbane (see the Translink Journey Planner).

Redland Bay Ferry Terminal is off Banana Street. UBD Map 226 Ref 17P. **Coordinator: Ross Gardner**

### NOVEMBER: COAST TO COAST across ENGLAND A presentation of Wainwright's Classic 304 km walk across England

**When:** Tue 14 November, 9.15am for 9.30am start.

**Cost:** \$7 including morning tea.

**Book and Pay:** Contact RGSQ at 07 3368 2066 or email [admin@rgsq.org.au](mailto:admin@rgsq.org.au) by Tue 7 November.

**Venue:** RGSQ Auditorium, "Gregory House", 237 Milton Rd

*Nine Standards  
Rigg on a high  
point of the  
Pennines half  
way across  
England,  
courtesy of Ron  
Owen.*



There are many long-distance walks in the UK but probably the best known is that from the Irish Sea at St Bees Head to the North Sea at Robin Hood's Bay. Created by Alfred

Wainwright, a legendary fell walker, guidebook writer, and illustrator, this walk in Northern England passes through some of the most beautiful and varied scenery in the country. It passes through three major geographical regions being: the rugged mountains and beautiful lakes of the Lake District, the rolling hills and pretty valleys of the Yorkshire Dales, and the extensive heather moorland of the North York Moors. There is dramatic coastal scenery at both start and finish, and in the Yorkshire Dales dry-stone walls and green valleys that support cultivated crops and grazing of sheep and cattle. The walk was completed by six friends in 17 days averaging 18 km per day during a midyear drought when there were water restrictions in London. Navigation was based on having a detailed guidebook and quality Ordnance Survey topographic maps backed up with compass and hand-held GPS.

**Coordinator: Ron Owen**

### NOVEMBER: QUEENSLAND PARLIAMENT HOUSE HIGH TEA

**When:** Friday 24 November, 10.30am - 12.00 noon

**Where:** Strangers' Dining Room

**Cost:** \$47.00 and payable to the RGSQ office by Fri 17 November.

*Parliament House,  
Brisbane, seen  
from the end of  
George Street,  
Brisbane. Image:  
Wikipedia, CC BY-  
SA 3.0*



High Tea will be followed by an optional tour of Parliament House commencing at 12.00 noon for approximately half an hour which will be followed by a visit to the O'Donovan Library at 12.45 pm.

Tour numbers are limited to twenty so if you are interested please register now to avoid disappointment. All who attend are kindly requested to provide photo identification on the day. Failure to comply will result in your inability to take part in this outing. Dress is smart casual.

RGSQ members will meet on the corner of George and Alice Streets outside the Parliamentary gate at 10.10am.

We will then move on to the Parliamentary Annexe entrance where a member of the Parliamentary staff will escort us to the Strangers' Dining Room.

**Please note:** There is no visitor parking available at Queensland Parliament House.

Hope to see you there! **Coordinator: Leo Scanlan**



### December: RGSQ Christmas Celebration

**Tue 5 December**

**Venue:** RGSQ Auditorium, 237 Milton Rd  
Milton

This year RGSQ is going back to its roots with a party at the Milton premises (might be our last celebration in Milton)

**RSVP: for catering purposes please contact the RGSQ Office at 07 3368 2066 or email [info@rgsq.org.au](mailto:info@rgsq.org.au).**

# Join RGSQ Traveller in 2018 for the journey of a lifetime to Southern Africa

## 25-day trek across 3 countries

### SOUTH AFRICA, BOTSWANA AND ZIMBABWE



## An Eye on Southern Africa

**Highlights:** Southern Drakensberg, Golden Gate Highlands National Park, KwaZulu Natal Battlefields, Hluhluwe, Hlane Royal National Park, Hazyview, Soutpansberg Mountain Range, Great Zimbabwe Ruins, Matobo National Park, Gweta, Maun, Moremi Game Reserve, Chobe River Front, Hwange National Park and Victoria Falls.

● **Cost:** \$11,250 per person twin share (single supplement \$1,950).

● **Inclusions:** ● International + Internal Domestic Flights in Africa ● Accommodation and Transport ● All meals  
● Fully escorted from Brisbane ● Guided Site Tours + 4x4 Excursions in National Parks.

● **TO REGISTER YOUR INTEREST:** Only a few more spots available, for more inquiries or to book please contact Leo Scanlan, the Tour Coordinator and Leader at 07 3343 4398 or email at [trekabout1@gmail.com](mailto:trekabout1@gmail.com).

## "AN EYE ON SOUTHERN AFRICA" ITINERARY

B - breakfast, L - lunch, D - dinner

- **Day 1** Brisbane Airport Depart **21 April 2018**
- **Day 2** Durban South Africa LD **22 April 2018**  
Arrival at airport & transfer to hotel; meet & greet.  
**Accommodation: Gateway Hotel Umhlanga.**
- **Day 3** Southern Drakensberg BLD **23 April 2018, 2 nights**  
**Durban City tour.** Lunch is prepared en route possibly in Pietermaritzburg (time dependent). **Accommodation: Drakensberg Gardens Golf and Spa Resort.**
- **Day 4** Southern Drakensberg BLD **24 April 2018**  
**Full Day Sani Pass & Lesotho Tour:** Take an exciting 4x4 drive up the Sani Pass, the highest road pass in Africa. Enter the Kingdom of Lesotho and visit a nearby Sotho village. Light lunch (included) at the highest pub in Africa, with its incredible views.  
**Accommodation: Drakensberg Gardens Golf and Spa Resort.**
- **Day 5** Golden Gate Highlands National Park BLD **25 April 2018, 1 night**  
Afternoon visit to the **Brandwag Buttress** & have a short hike (approx. 1 hr or less). Lunch en route prepared by crew.  
**Accommodation: Basotho Cultural Village Rest Camp.**
- **Day 6** KwaZulu Natal Battlefields BLD **26 April 2018, 1 night**  
Zululand Battlefields excursion visiting: **Spion Kop, Rorke's Drift & Isandlwana** (escorted by a battlefields guide). Spion Cop, Anglo Boer War; Rorke's Drift and Isandlwana, Anglo Zulu War. Lunch en route prepared by crew. **Accommodation: Battlefields Country Lodge.**
- **Day 7** Hluhluwe BLD **27 April 2018, 1 night**  
Enroute visit **St Lucia-iSimangaliso Wetland Park** for a guided St Lucia estuary boat trip and optional walk on the Indian Ocean beach. Lunch en route prepared by crew. **Accommodation: Ezulwini Game Lodge.**
- **Day 8** Hlane Royal National Park BLD **28 April 2018, 1 night**  
Lunch en route prepared by crew. **Accommodation: Ndlovu Camp.**
- **Day 9** Hazyview BLD **29 April 2018, 2 nights**  
Morning **Umphakatsi Experience** (a visit to a Swazi Chief's homestead). Lunch en route prepared by crew.  
**Accommodation: Casa Do Sol.**
- **Day 10** Hazyview BLD **30 April 2018**  
**Central Kruger** Lunch en route prepared by crew.  
**Accommodation: Casa Do Sol.**
- **Day 11** Soutpansberg Mountain Range BLD **1 May 2018, 1 night**  
**Blyde River Canyon** Lunch en route prepared by crew.  
**Accommodation: Mashovhela Bush Lodge and Drumbeat Restaurant.**
- **Day 12** Great Zimbabwe Ruins BLD **2 May 2018, 1 night**  
For the **South Africa and Zimbabwe border post** (expect approx. 2 hrs delays at border post). Lunch en route prepared by crew. Short stops enroute (time permitting).  
**Accommodation: Lodge at the Ancient City.**
- **Day 13** Matobo National Park BLD **3 May 2018, 2 nights**  
**Great Zimbabwe ruins.** Lunch en route prepared by crew.  
**Accommodation: Big Cave Camp.**
- **Day 14** Matobo National Park BLD **4 May 2018**  
**Rhino walk. Grave Cecil John Rhodes.** Lunch en route prepared by crew. **Accommodation: Big Cave Camp.**
- **Day 15** Gweta BLD **5 May 2018, 2 nights**  
**Nata Bird Sanctuary. Planet Baobab** guided walks.  
**Accommodation: Planet Baobab.**
- **Day 16** Gweta BLD **6 May 2018**  
**Ntwetwe Pan Expedition** Today we visit the **Ntwetwe Pan** for a morning excursion and later we learn about cattle trading in this region, and finally we visit a local community that call the vicinity of the **Magadikgadi Salt Pan** home. Lunch en route prepared by crew. **Accommodation: Planet Baobab.**
- **Day 17** Maun BLD **7 May 2018, 1 night**  
Transit to Maun. **Optional Okavango** scenic flights. Lunch en route prepared by crew. **Accommodation: Thamalakane Riverlodge.**
- **Day 18** Moremi Game Reserve BLD **8 May 2018, 2 nights**  
Depart Maun in the late morning on safari vehicles heading to **Moremi/Khwai Game Reserves** (NB: group to be split into 12

seated safari vehicles). Game driving to the lodge and enjoy sunset at the lodge. Lunch en route prepared by crew.

**Accommodation: Mankwe Bush Lodge.**

- **Day 19** Moremi Game Reserve BLD **9 May 2018**  
**Moremi Game Reserve.** Lunch en route prepared by crew.  
**Accommodation: Mankwe Bush Lodge.**



The amazing foresight of Chief Moremi created one of the world's most famous reserves, conserving part of the Okavango Delta and the plains to its east. The reserve covers more than 4871 square kilometres of pristine wilderness, and the varied terrain includes savannah, winding waterways, and thick forest.

- **Day 20** Chobe Riverfront BLD **10 May 2018, 2 nights**  
A short drive northwards we arrive in Kasane, the gateway to Chobe National Park. **Chobe River Cruise.** Lunch en route prepared by crew. **Accommodation: Chobe Marina Lodge.**
- **Day 21** Chobe River Front BLD **11 May 2018**  
**Chobe National Park Game Viewing.** **Accommodation: Chobe Marina Lodge.**



- **Day 22** Hwange National Park BLD;  
**12 May 2018, 2 nights**  
**Hwange National Park.** Optional game drive by the lodge in the afternoon.  
**Accommodation: Sable Sands.**

- **Day 23** Hwange National Park BLD **13 May 2018**  
**Hwange National Park.** Packed lunch during game drives.  
**Accommodation: Sable Sands.**
- **Day 24** Victoria Falls Zimbabwe BLD **14 May 2018, 1 night**  
In Transit to **Victoria Falls.** **Shearwater** guided tour of the Falls. **Victoria Falls Hotel High Tea** on the veranda. **Optional** helicopter flight over **Victoria Falls.** **Accommodation: Victoria Falls Hotel.**
- **Day 25** Victoria Falls/Johannesburg **15 May 2018**
- **16 May 2018** **Arrive in Australia**

Photos courtesy of Jenman African Safaris.

*Whilst every effort has been made to ensure the accuracy of information in the itinerary at the time of publication, RGSQ cannot accept responsibility for the errors, changes, omissions or for descriptions which have been supplied by third party providers.*

An RGSQ Traveller Trek in association  
with Jenman African Safaris.



**JENMAN**  
AFRICAN SAFARIS

## SPECIAL INTEREST GROUPS

### KEN SUTTON

### MEMORIAL LIBRARY GROUP

**When:** Monday, October 23, 2017

**Time:** 9:00 am

**Where:** "Gregory House", 237 Milton Rd.



### MAP GROUP

#### UPCOMING MAP GROUP GATHERINGS & EVENTS

##### OCTOBER 2017 - Gathering & External Event:

**Monday, 9 October: 10am to 12 noon.** **Gathering:** Auditorium, Gregory House.

- **Presentation:** Speaker/Topic: Peter Lloyd - "Thematic Mapping - 50 Years Ago".

- **Gathering:** General Items about remainder of 2017 Program, further details on 2018 Program.

**(Note: Monday 2 October is Queen's Birthday public holiday)**

**Tuesday 10 October: All Day External Event - STEAMx Brisbane**

- **Event Organiser:** QSSA (Qld Spatial and Surveying Association); contact: [info@qssa.com.au](mailto:info@qssa.com.au)
- **Venue:** Queensland Museum
- **Fee:** For RGSQ members - the likely discounted rate of \$35 for the day (RGSQ is a participant of the Queensland Science Network, along with QSSA).
- **Further Information:** QSSA's Website still mentions STEAMx for Tuesday 10 October 2017, but with no further details. If you are keen to attend this External Event, then please contact QSSA directly, or google its website: [qssa.com.au](http://qssa.com.au)

##### NOVEMBER 2017 - Key Event: Map Group Canberra Trip:

**Monday 20 to Friday 24 November 2017.**

**14 to 15 members of Map Group are now going on this Trip and they will be advised, via email, of further details. We'll be visiting:**

- National Library of Australia (NLA) - Map Collection
- Geoscience Australia - Special tour on Australian geosciences
- National Museum of Australia - Explorers and relics exhibits
- Australian War Memorial and Museum - Military maps and general exhibits

##### DECEMBER 2017 - Gathering:

**Monday, 4 December 2017: END OF YEAR SOCIAL 10 am to 12 noon/thereabouts.**

- **Venue:** Auditorium, Gregory House, 237 Milton Road, Milton.

**Details to be discussed at October 2017 Gathering**

**Bob Abnett, Co-ordinator, Map Group**



*From the August presentation:*  
**"Using Drones in Modern Mapping"**  
(including use of aerial photography, Lidar, other terrain sensors located on the drones). Presented by Quentin Visentin, C R Kennedy - Survey Solutions, and Geoff Barker, UAS Pacific - Unmanned Autonomous System.

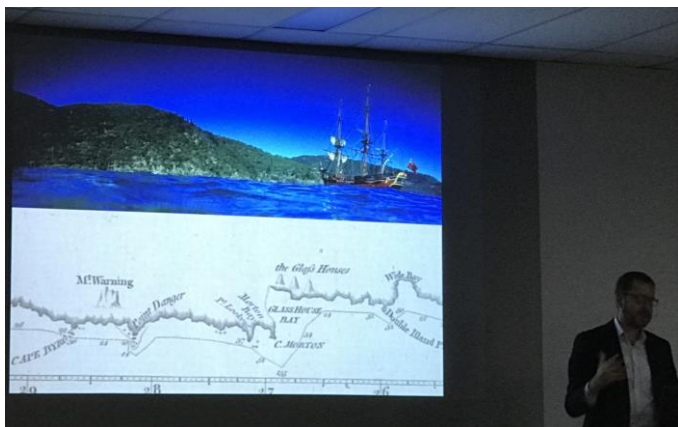
## SYNOPSIS

### *September Lecture: 18th century publications in wake of Cook's Endeavour voyage: rare holdings in Queensland Collections by Simon Farley, Manager, The University of Queensland's Fryer Library*

Synopsis by Peter Griggs

September's monthly lecture was delivered by Simon Farley, the Manager of The University of Queensland's Fryer Library, one of the state's, if not the country's, premier research libraries. Established ninety years ago, the Fryer Library's collection today includes plans, drawings and records of key Queensland-based architects, literary manuscripts of prominent Australian writers, the University of Queensland Press Archive, rare books, and other unique material documenting Australian cultural history. Some of the records of the then Royal Geographical Society of Australasia (Queensland) from the early twentieth century are also held by the Fryer Library.

Simon began by noting that Captain James Cook RN (1728-1779) is still very much making news, despite his death nearly 240 years ago. In May 2016, a team of researchers claimed to have found the remains of HMS *Endeavour* in Newport Harbour, in the US state of Rhode Island. Currently, US archaeologists from the Rhode Island Marine Archaeology Project (RIMAP) are working with the Australian National Maritime Museum in Sydney to confirm that the remains of the ship found in the harbour are the HMS *Endeavour* (March, 2016). Just last month, a statue of Captain Cook in Sydney was vandalised in a protest against the wording on the statue. Similar vandalism occurred in Gisborne, New Zealand, last year (Roy, 2016).



Simon Farley delivering the September Lecture at RGSQ, Image courtesy of Kay Rees.

Whatever your views about Cook - hero or villain - Simon reminded the audience that Cook was a brilliant navigator and map maker. He was trained in the art of using a plain table (plane table after 1830), a device employed in surveying and related disciplines to provide a solid and level surface on which to make field drawings, charts and maps. His original map of New Foundland, and later maps of New Zealand and the east coast of Australia, are still today incredibly accurate representations of the earth's surface, even when compared with satellite imagery. Cook was also a skilled maritime commander, ensuring the safety of his crew by insisting that they all - officers

included - ate picked cabbage (and fresh fruits when available), ensuring they did not catch scurvy on the long sea voyages.

Cook's first voyage to the South Pacific (1768-1771) had as its scientific goal the observation of the transit of Venus at Tahiti in April 1769. Cook also had secret instructions to seek out the Great South Land or Terra Australis Nullius (i.e. Latin for 'Nobody's Land') which geographers believed must exist in order to balance the globe. After leaving Tahiti, Cook encountered and thoroughly mapped New Zealand. He then continued westward, sailing across what we now know as the Tasman Sea, eventually running into the east coast of Australia. After charting the coastline, he took possession of the whole eastern coast for the British at Possession Island, later adding the name, New South Wales, in his journal. After repairs in Batavia, he sailed back to England, reaching there on 13 July 1771.

Publications associated with such momentous discoveries soon commenced appearing. The first was titled *A Journal of a Voyage Round the World* (1771), an unofficial account attributed to James Magra (1746?-1806) the Midshipman on the voyage (his surname was changed to Matra in 1775). The book was published two months after the return of the *Endeavour* to England, much to the annoyance of the British Admiralty (Frost, 2005). The first official publication was written by John Hawkesworth (c. 1715-1773), an English writer and book editor who was commissioned by the British Admiralty to use the official journals kept by Cook Sir Joseph Banks to create the account. Published in three volumes, *An account of the voyages undertaken / by the order of His present Majesty: for making discoveries in the Southern Hemisphere* (1773) received mixed reviews, with Cook himself being upset, feeling he was misrepresented.

The State Library of Queensland, Fryer Library, Parliamentary Library of Queensland and all the State Libraries around Australia have sets of the Hawkesworth. As McMullin states in his essay, "Cook's First Voyage and the Strahan Quarto Editions of 1773", any "self-respecting collection of Australiana or New Zealandiana, and most major collections in this part of the world contain at least one set. The National Library of Australia and the State Library of Victoria are not alone in possessing four sets published in London and dated 1773."

Finally, Simon drew members' attention to the fact that 2020 will be the 250<sup>th</sup> anniversary of Cook's voyage along the East Coast of Australia. The late eighteenth century publications which immediately appeared after Cook's 1770 voyage no doubt will play a significant part in any displays mounted to celebrate this milestone. We here in Brisbane can view several of these seminal publications at either the John Oxley Library or Fryer Library.

## References

- Alan Frost, 'Matra, James Mario (Maria) (1746-1806)', *Australian Dictionary of Biography*, <http://adb.anu.edu.au/biography/matra-james-mario-maria-13084/text23669>, published first in hardcopy 2005, accessed online 11 September 2017.
- Stephanie March, 'HMS *Endeavour*: Scarce remains of Captain Cook's ship could stay in US after Newport Harbour discovery', 6 May 2016, <http://www.abc.net.au/news/2016-05-05/endeavour-shipwreck-us-could-keep-relics-from-captain-cook-ship/7385996>.
- Eleanor Roy, 'Captain Cook statues defaced in NZ amid calls for Maori chiefs to take his place', 31 July 2016, <https://www.theguardian.com/world/2016/jul/31/captain-cook-statues-defaced-in-nz-amid-calls-for-maori-chiefs-to-take-his-place>.

## RGSQ's Fraser Island 4x4 Trek Report

by Kay Rees, RGSQ member



The RGSQ Trek to Fraser Island was attended by 20 geographic members including guides Mike & Lindy West. Mike, being a member of FIDO back in the 1970s, has a wealth of information about the island, its forests in particular. Our meeting point was the Manta Ray Barge Office in Rainbow Beach and after obtaining our barge ticket and National Park permits, we set off to Inskip Point. Of course, tyres were deflated before venturing onto the beach and remained that way for the length of our stay. Our drive along the southern portion of the 75-mile Beach was a dream - nice hard sand with a low tide earlier - and we were fortunate to spot some Sanderlings on the water's edge. This species breeds in the Arctic and makes its long way south for the summer. It is also listed as vulnerable.

Our hosts at Dilli Village, Diane & Bruce, made us feel very welcome and after settling into our accommodation, we met for Happy Hour followed by dinner prepared by Alfie, our chef. Several folk made the short walk through the sand dune to the beach, keeping an eye out for any nasties i.e. dingos or snakes. For our first day's outing, we were in the hands of Lindy as Mike was taken off to the mainland in an ambulance. Fortunately, he was only away for the night and was back on deck the next day. Lindy showed us sites around Dilli viewing wildflowers in the heathland and admiring lakes where we also enjoyed seeing sundews. Morning Tea and lunch were prepared at Dilli and were taken out each day. We always managed to find a very pleasant spot to relax and enjoy our food.

The following days were spent in the cool of the forests learning what the trees were, why they were logged and about the regrowth. Satinay, blackbutt, hoop pine, Kauri pine, tallowwood amongst others. In particular, the Bonsai Forest was so interesting to drive through as, because the sand lacks nutrients, the trees (mostly banksia) are stunted. The wildflowers were amazing even if they weren't at their best this year. Lack of rain is most likely a contributor to this. Poyungan Creek is where the main camp was situated during the campaign with crystal clear water. Great place for MT, even the trapdoor spiders thought so, making their nests in the road cut-out banks.

One particular visit was of immense interest - to the Fraser Island Patterned Fens. Scientific studies are being carried out to investigate further these unique parts of the landscape. Donning heavy-duty clothing & footwear was a must as the sword ferns are particularly ferocious and we didn't want to have any scratched arms & legs. Fascinating place! Debil Debil Amphitheatre proved too much of a challenge to climb down into the bottom. We left that for another visit.

A long drive north to The Pinnacles on a spectacular morning (every day was glorious), gave us time to visit Eli Creek for a paddle, a stop at the wreck of the hospital ship Maheno (not much of it left now) and a short walk to see the coloured sands. Then we headed inland into the forests before a walk to view the Knifeblade Sandblow. 'Someone' was stalked by "Dudley" dingo

on the way back to the car park, most certainly looking for a handout. In the afternoon, we had time to be civilised by stopping for a coffee at Happy Valley where we were able to see artefacts and read some information on the Maheno wreck.

On our last day, we drove across the Island to Ungowa on the west coast, with a view looking across the Great Sandy Strait to the mainland. On the way, we had a look at the small airstrip and drove on the old logging roads. The roads on the Island are all sand and some were rather tricky driving on especially when 'someone' got caught in two big holes. But a trek is nothing without a little bit of drama. We were turned back on two occasions when we came across a tree across the road. Way too big for us to remove or negotiate.

*"Between the group we saw, or at least heard, almost 50 species of birds, spotted whales & dolphins in the ocean and the possibility of dugong in the strait, and goannas."*

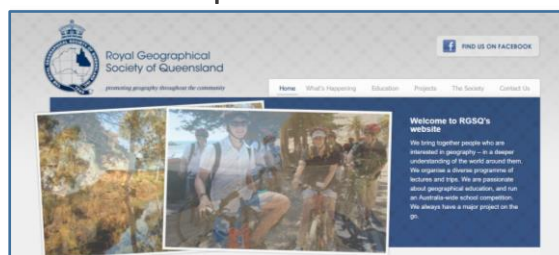
All too soon, our 6 days were over and we headed back down the beach to the barge and home.

Our leader, Wayne Mackenzie did an outstanding job of putting this Trek together and we all thank him very much. Also, we had a group who have years of bush experience and the camaraderie was so appreciated & enjoyable. It would be wonderful to revisit sometime, especially as this treasure is just sitting right on our doorstep.

*"Bird watching on Fraser", image courtesy of Kay Rees.*



## RGSQ Website | Online Presence



RGSQ has recently embarked on a mission to update its website <http://www.rgsq.org.au/> with the aim to improve its online presence with a mobile friendly website. We'd like to hear your thoughts about what you'd like to see on the website or how you'd use it. Are there aspects of the current website you'd like to see in the new version and are there some aspects you'd like removed?

Are there certain features that you'd like the new website to offer? Also, if you have a favorite website in terms of design or functionality, please send the link to the webpage together with your feedback to [info@rgsq.org.au](mailto:info@rgsq.org.au). Thank you!

---

## Volunteer needed for the mail out of the RGSQ Bulletin

Dear members, the Bulletin is one of the main ways in which we communicate with our members. It is both emailed and posted to those who prefer a paper copy. For the paper Bulletin, we require a helper to place address labels on about 160 Bulletins. If you can spare two hours on a Thursday morning, once a month, usually the third Thursday of the month, we'd love to hear from you and your help would be appreciated greatly. Thank you!

# RGSQ Bulletin

October 2017

**Lecture of the Month: Tue October 5**

*"Geography matters: the past present& future of census data"* Dr Elin Charles-Edwards, UQ

**Sunshine Coast Lecture: Tue 26 September**

*"Gympie Gold and Queensland"* by Bernard Fitzpatrick

**Tours and Activities: Thur October 26** –  
*Moreton Bay Island trip.*

**Map Group: Mon 9 October, 10am-12pm**

"Gregory House", 237 Milton Rd, Milton.

**Event:** "Thematic Mapping – 50 Years Ago" by  
Peter Lloyd, former RGSQ President.

**Ken Sutton Memorial Library: Mon October 23,**  
9:00am, "Gregory House", 237 Milton Rd, Milton.  
*Council meetings are held on the second  
Tuesday of each month.*

The Royal Geographical Society of Queensland Inc  
"Gregory House", 237 Milton Road, Milton Q 4064

POSTAGE  
PAID  
AUSTRALIA