



# RGSQ Bulletin

November 2017

ISSN 1832-8830

Vol 52 no 10

Published by The Royal Geographical Society of Queensland Inc., a not-for-profit organisation established in 1885 that promotes the study of geography and encourages a greater understanding and enjoyment of the world around us.

Patron: [H.E. Paul de Jersey AC, Governor of Queensland](#)

President: Dr Iraphne Childs

## From the President

**D**ear Members, it is a great honour to have been elected President of the RGSQ at the recent AGM. I would like to thank members for this opportunity and for placing your confidence in me. As some members will know, I was previously President from 2003-2005 which was just after the Society moved from Brookes Street in the Valley to our present Gregory House in Milton. Now the Society is entering another period of transition and I hope to make a contribution to our goals and the enduring purpose of the Society promoting Geography as we move forward.

Firstly, I would like to record my thanks to Jamie Shulmeister, immediate past President, for the excellent work he has done in steering the Society enthusiastically towards new endeavours and projects which will come to fruition over the next few years. Jamie's positive attitude and great sense of humour always helped to put a bright spin on weighty Council matters. Thankfully, Jamie will remain on Council for the next year where we will appreciate his advice on some critical decisions which the Society is facing.

On behalf of Council and Members, I would also like to record my thanks to Dal Anderson who is stepping down from Council after more than 30 years of service to the Society including as President, Vice-President and as a convenor and member of many committees and expeditions. We'll miss your calm and wise advice on Council, Dal, but will enjoy seeing you at RGSQ on many future occasions.

Thanks, also, to Tony Hillier who has given much time and valued advice particularly on the Building and Gregory House Directions committees, and on Society expeditions. Although not on Council this coming year, we hope Tony will continue to be involved on committees of his choice. Kathryn Scott is also leaving us (temporarily we hope) to join the Homeward Bound program for a group of women with science-based backgrounds selected from around the world. She is undertaking a year-long program to develop leadership and strategic capabilities, which will culminate in a study tour to Antarctica in February 2018. Bon Voyage, Kathryn, and we look forward to hearing about your adventures later.

I would like to take this opportunity to tell you a little about my personal and professional background. I was born in England, and migrated with my family to Australia at the age of 14. We came on an Italian migrant ship, a one-month voyage, stopping on the way in Aden, Columbo and Freemantle before disembarking in Adelaide. So, I was a

"boat-person". Our first home in Australia was in Whyalla, South Australia where my father had a job with BHP Shipbuilding. Our "garden" was bare red soil, surrounded by a tall galvanised iron fence (courtesy of BHP steel), complete with red-back spiders.

Our street was at that time the last in Whyalla's outskirts so beyond our fence the grey-green salt-bush plains stretched to the horizon. It could not have been more different from the house and garden we had left in southern England. Having heard that Queensland offered more, after only five months in Whyalla my parents packed up and moved to Ipswich where I completed high school. As an undergraduate at the University of Queensland, I majored in Geography and Japanese, both of which would drive my future career paths. In 1972, I became an Australian Citizen, and I still have dual citizenship with the UK - I hope this does not disqualify me from the Presidency of RGSQ!

I spent 5 years studying, working and teaching English in Japan and then 6 years in Hawaii where I completed an MA in Japanese language and literature and my Ph.D. in Geography from the University of Hawaii. I returned to Brisbane in 1984, taught Japanese at Griffith University for a while, then took a lecturing position in the Department of Geography at UQ from 1984-1992. I was Senior lecturer in Geography at the QUT from 1993-2010. I returned to UQ in 2011 where I now hold an Honorary position as lecturer in Geography. As an academic and professional geographer, I have enjoyed teaching and researching in the areas of human and cultural geography, population change, resource and environmental management, hazards and disaster management and Asia-Pacific regional geography. I volunteer with the Australian Red Cross Emergency team for North Brisbane and since 2011 have been deployed to cyclone & flood-affected areas in Queensland during our exciting summers. My husband, Ralph, and I have twin daughters, Alison and Wendy who are now 25 years old and we live in Newmarket. I look forward to catching up with many of you at our monthly lectures and on other RGSQ occasions.



*Iraphne Childs*

**Iraphne Childs, President**

## RGSQ COUNCIL

**President:** Iraphne Childs

**Vice Presidents:** Peter Griggs

Margaret  
Keates

**Secretary:** Margaret McIvor

**Treasurer:** Chris Spriggs

**Councillors:** Bob Abnett

Paul Broad  
Jennifer Carter  
Duncan Cook  
Ian Francis  
Leo Scanlan  
James Shulmeister

## CONTRIBUTORS

Bob Abnett  
Iraphne Childs  
Mary Comer  
Ross Gardner  
Peter Griggs  
Andrew Peacock  
Leo Scanlan

### Photography:

Kay Rees, Bob Abnett,  
Ross Gardner, Margaret  
McIvor, Leo Scanlan,  
Peter Griggs, Dr Andrew  
Peacock.

## WELCOME NEW MEMBERS

We have much pleasure in welcoming *Ms Suzanne Mary Reid* and *Mr Gary* and *Mrs Wendy Bradshaw* as new members. We hope your association with your new Society is long and mutually enjoyable.

## LECTURE OF THE MONTH

### “Medicine - on Ice and on the Rocks”

by *Dr. Andrew Peacock*

Tue November 7, 7:30 pm “Gregory House”

237 Milton Rd, Milton



*Medical Director of Expedition and Wilderness Medicine Australia Pty Ltd, Dr. Andrew Peacock is a photographer drawn to documenting the landscapes, people and activities where adventure meets nature, or as he calls it: “adventure travel.”* Born in South Australia, Andrew took up photography while volunteering as a medical doctor in India and Nepal. Andrew combines work as an expedition doctor in remote areas with documenting those experiences with a camera. Andrew is a multiple category finalist for the past five years in the Australian Geographic Nature Photographer of the Year.

His work can be seen at

<http://www.footloosefotography.com/>



Base Camp, Trango Tower expedition, Pakistan. Photo by Dr Andrew Peacock/[www.footloosefotography.com](http://www.footloosefotography.com)

Although very familiar with the emergency room interior of many hospitals around Australia, Dr. Andrew Peacock has pursued a career in medicine largely outside hospital walls. From the mountains of Alaska and Pakistan to the ice of Antarctica, Andrew seeks to combine his adventure skills with the provision of medical care on expeditions around the world.

His presentation will recount some of the stories of these journeys spent juggling the professional demands of medical care in remote environments with a desire to produce creative and compelling imagery of the landscapes and people encountered. The presentation will showcase his award winning professional photography.

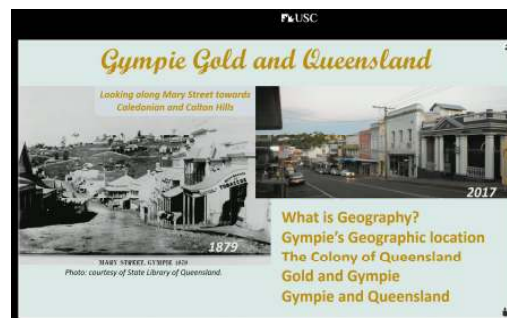
We look forward to welcoming you on the night!

## September Lecture Recording

If you missed Bernard's lecture on “*Gympie Gold and Queensland*” at the University of the Sunshine Coast, a

recording has been made available by the USC and can be accessed here:

<https://mediasite.usc.edu.au/Mediasite/Play/Oaf43e92f478493bbf6c455fd46d49a81d>



1879

MARY STREET, GYMPIE 1879  
Photo: courtesy of State Library of Queensland

2017  
What is Geography?  
Gympie's Geographic location  
The Colony of Queensland  
Gold and Gympie  
Gympie and Queensland

## VOLUNTEER NEEDED

The Archives Group requires someone who would be willing to word process 40-50, hand written box lists (i.e. list of files in archival boxes) and labels for archival boxes. Currently, the Archives Group meets on a Monday, but this task could be undertaken any time. Entertaining morning teas on a Monday, sometimes with cakes, are a bonus. Laptop computer supplied. If you are interested, please email Peter Griggs at [peter.griggs1960@outlook.com](mailto:peter.griggs1960@outlook.com).

## SYNOPSIS

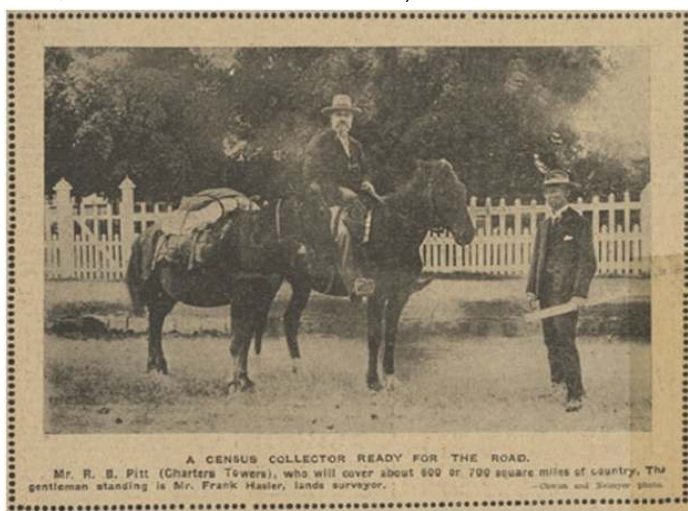
### **"GEOGRAPHY MATTERS: THE PAST, PRESENT AND FUTURE OF CENSUS DATA"**

October lecture by Dr Elin Charles-Edwards,  
School of Earth & Environmental Sciences, The  
University of Queensland

By Peter Griggs, RGSQ Member

October's lecture was delivered by Dr Elin Charles-Edwards, lecturer in human geography at The University of Queensland. Elin's research explores migration, mobility and the ways in which populations vary over space and time. She has published widely in academic journals and has undertaken work for the United Nations Population Division and the World Bank providing a global update of internal migration patterns and trends. She loves the richness of data that is generated by an Australian Census.

Elin began by defining just exactly what is a census and why it is different to a survey. A national census attempts to count everyone within a defined territory on a single night and gather data on a range of characteristics including income, gender, religion, and ancestry, type of housing and relationship status. A survey may only count a sample of a population. Some countries only hold a census every decade (e.g. India, USA; China since 1990); other countries have held a census infrequently due to civil conflict or the cost and complexity of organising such an undertaking (e.g. last census in Afghanistan was 1979; last census in Lebanon was 1932).



The Brisbane Courier 1 April 1911

Photo: A census collector ready for the road, *The Brisbane Courier*, 1 April 1911.

*Australia has good census data, even for the nineteenth century, when there were colonial musters and colonial censuses, a result of the British government wanting to know what was happening in its far-flung colonies around the globe.*

After a few longish gaps between Australian censuses due to the Great Depression and World War II, Australia has held a census every five years since 1961 (like Canada and Japan). Moreover, Australia has developed a world-class reputation for conducting censuses, and the Australian Bureau of Statistics (hereafter ABS) has provided advice to other countries on how to carry out an effective census.

The reasons for conducting a census were then outlined by Elin. The data gathered at such events are important in planning the delivery of services, creating electorates, allocating funding to the Australian states and investigating patterns of income, migration, home ownership and unemployment to list but a few uses of census data. Other methods of gathering demographic data can be used (e.g.

mobile phone usage; samples of neighbourhoods), but the Australian census is very important to researchers as the data can be manipulated to show relationships between gender, income, location and ancestry and information gathered from other sources on crime, disease, mortality and social disadvantage.

*"Conducting an Australian census is costly – the nation spent \$440 million on the 2011 census and was required to hire 43,000 field staff to ensure a high compliance rate."*

Conducting Australian censuses, however, has not been without controversy. The question of whether Indigenous Australians ought to be counted caused tensions between the statisticians and politicians in 1911 and 1921. In the lead up to the 1971 Census there were public protests over privacy. Major newspapers and one political party questioned the inclusion of names on the Census form (an ongoing concern which was again raised during the 2016 census). An organised campaign before the 2001 census to get young people to list their religion as 'Jedi Knight' resulted in 70,000 Australians claiming adherence to this religion (more than the Lutheran Church), but their responses were classified as 'religion inadequately described' (Wright, 2011).

Elin then spoke about the issues surrounding the 2016 Australian census. Persistent funding cuts to the ABS during the 2000s and early 2010s led to the Commonwealth's Chief Statistician asking the Commonwealth government to delay the 2016 census until 2021 due to the un-readiness of the organisation. This request was denied, so the ABS went ahead with a fully online census, although Australians could still request paper census forms. The census website, however, crashed on the night of the census and was off-line for 43 hours, a result of hardware failure. Concerns were raised about the quality of the data but a subsequently formed Census Assurance Panel has so far concluded that the data is 'fit for purpose' or is reliable enough to be used. The overall response rate of 95.1% is similar to the 2006 and 2011 census, so national coverage was good, and less than one per cent of the census replies had to be rejected because they were deemed to be 'invalid'.

Preliminary findings from the 2016 census have suggested a range of emerging social and demographic trends. After a disastrous 1980s and 1990s, when many Victorians migrated to Queensland, Melbourne has re-emerged as the country's growth centre and could overtake Sydney in size by 2050. Australia has become more Asian than European, a result of large numbers of Chinese and Indian international students studying in this country. Home ownership has fallen and there has been an upsurge in more Australian adult children still living at home (*I fit into this category, as my 24-year-old son is still living with us*). More people are not Australian citizens, but are living here on temporary or 457 Work Visas. This trend is beginning to reverse the long-standing emphasis by successive Commonwealth governments that migration to Australia was not for short periods - if you came to this country you were expected to settle here permanently and become citizens.

Elin finished her presentation by pondering the question, 'will Australia have a 2021 census?'. The ABS could be replaced by non-government data collectors (e.g. Acorn; Experian) or alternative data sources (e.g. mobile phone data usage; Google, Twitter and Facebook use). Yet Canada, noted Elin, had returned to a full census in 2016, after community dissatisfaction about the data from the non-compulsory 2011 National Household Survey which replaced a full census. Perhaps we, here in Australia, should take note of the Canadian outcome. We should ask our Commonwealth government to properly fund the ABS, a major national agency that does vital work for the country, especially as shortly a third of Australians will be over 65 years of age and accurate data will be needed on the distribution of the elderly and how to meet their needs for health care, accommodation and transport.

#### Reference:

Beth Wright (2011), "A History of the Australian Census", at: <http://www.abs.gov.au/ausstats/abs@.nsf/Lookup/2071.0Feature+Article3July+2011> [accessed 5 October 2017]

# Join RGSQ Traveller in 2018 for the journey of a lifetime to Southern Africa

## 25-day tour across 3 countries

### SOUTH AFRICA, BOTSWANA AND ZIMBABWE



# An Eye on Southern Africa

If you haven't travelled with us before – just imagine your journey across countries and cultures as you explore the immensity of *Victoria Falls in Zimbabwe*, one of the great natural wonders of the world or the diversity of *Kruger North National Park in South Africa*, the scenic surroundings of *Hluhluwe - Imfolozi National Park and Golden Gate National Park, Natal, in South Africa*, the savannas of *Hwange National Parks in Zimbabwe*, as well as the diverse wildlife in *Chobe National Park in Botswana*.

- **Cost:** \$11,250 per person twin share (single supplement \$1,950).
- **Inclusions:** ● International + Internal Domestic Flights in Africa ● Accommodation and Transport ● All meals
- Fully escorted from Brisbane ● Guided Site Tours + 4x4 Excursions in National Parks.

**TO REGISTER YOUR INTEREST:** Only a few more spots available, for more inquiries or to book please contact Leo Scanlan, the Tour Coordinator and Leader at [07 3343 4398](tel:0733434398) or email at [trekabout1@gmail.com](mailto:trekabout1@gmail.com).

## “AN EYE ON SOUTHERN AFRICA”

### ITINERARY

B - breakfast, L - lunch, D - dinner

- **Day 1** Brisbane Airport Depart **21 April 2018**
- **Day 2** Durban South Africa LD **22 April 2018**  
Arrival at airport & transfer to **hotel**; meet & greet. **Accommodation: Gateway Hotel Umhlanga.**
- **Day 3** Southern Drakensberg BLD **23 April 2018, 2 nights**  
**Durban City tour.** Lunch is prepared en route possibly in Pietermaritzburg (time dependent). **Accommodation: Drakensberg Gardens Golf and Spa Resort.**
- **Day 4** Southern Drakensberg BLD **24 April 2018**  
**Full Day Sani Pass & Lesotho Tour:** Take an exciting 4x4 drive up the Sani Pass, the highest road pass in Africa. Enter the Kingdom of Lesotho and visit a nearby Sotho village. Light lunch (included) at the highest pub in Africa, with its incredible views. **Accommodation: Drakensberg Gardens Golf and Spa Resort.**
- **Day 5** Golden Gate Highlands National Park BLD **25 April 2018, 1 night**  
Afternoon visit to the **Brandwag Buttre** & have a short hike (approx. 1 hr or less). Lunch en route prepared by crew. **Accommodation: Basotho Cultural Village Rest Camp.**
- **Day 6** KwaZulu Natal Battlefields BLD **26 April 2018, 1 night**  
Zululand Battlefields excursion visiting: **Spion Kop, Rorke's Drift & Isandlwana** (escorted by a battlefields guide). Spion Cop, Anglo Boer War; Rorke's Drift and Isandlwana, Anglo Zulu War. Lunch en route prepared by crew. **Accommodation: Battlefields Country Lodge.**
- **Day 7** Hluhluwe BLD **27 April 2018, 1 night**  
Enroute visit **St Lucia-iSimangaliso Wetland Park** for a guided St Lucia estuary boat trip and optional walk on the Indian Ocean beach. Lunch en route prepared by crew. **Accommodation: Ezulwini Game Lodge.**
- **Day 8** Hlane Royal National Park BLD **28 April 2018, 1 night**  
Lunch en route prepared by crew. **Accommodation: Ndlovu Camp.**
- **Day 9** Hazyview BLD **29 April 2018, 2 nights**  
Morning **Umphakatsi** Experience (a visit to a Swazi Chief's homestead). Lunch en route prepared by crew. **Accommodation: Casa Do Sol.**
- **Day 10** Hazyview BLD **30 April 2018**  
**Central Kruger** Lunch en route prepared by crew. **Accommodation: Casa Do Sol.**
- **Day 11** Soutpansberg Mountain Range BLD **1 May 2018, 1 night**  
**Blyde River Canyon** Lunch en route prepared by crew. **Accommodation: Mashovhela Bush Lodge and Drumbeat Restaurant.**
- **Day 12** Great Zimbabwe Ruins BLD **2 May 2018, 1 night**  
For the **South Africa and Zimbabwe border post** (expect approx. 2 hrs delays at border post). Lunch en route prepared by crew. Short stops enroute (time permitting). **Accommodation: Lodge at the Ancient City.**
- **Day 13** Matobo National Park BLD **3 May 2018, 2 nights**  
**Great Zimbabwe ruins.** Lunch en route prepared by crew. **Accommodation: Big Cave Camp.**
- **Day 14** Matobo National Park BLD **4 May 2018**  
**Rhino walk. Grave Cecil John Rhodes.** Lunch en route prepared by crew. **Accommodation: Big Cave Camp.**
- **Day 15** Gweta BLD **5 May 2018, 2 nights**  
**Nata Bird Sanctuary. Planet Baobab** guided walks. **Accommodation: Planet Baobab.**
- **Day 16** Gweta BLD **6 May 2018**  
**Ntwetwe Pan** Expedition Today we visit the **Ntwetwe Pan** for a morning excursion and later we learn about cattle trading in this region, and finally we visit a local community that call the vicinity of the **Magadikgadi Salt Pan** home. Lunch en route prepared by crew. **Accommodation: Planet Baobab.**

- **Day 17 Maun BLD** **7 May 2018, 1 night**  
Transit to Maun. **Optional Okavango** scenic flights. Lunch en route prepared by crew. **Accommodation: Thamalakane Riverlodge.**
- **Day 18 Moremi Game Reserve BLD** **8 May 2018, 2 nights**  
Depart Maun in the late morning on safari vehicles heading to **Moremi/Khwai Game Reserves** (NB: group to be split into 12 seated safari vehicles). Game driving to the lodge and enjoy sunset at the lodge. Lunch en route prepared by crew. **Accommodation: Mankwe Bush Lodge.**
- **Day 19 Moremi Game Reserve BLD** **9 May 2018**  
**Moremi Game Reserve.** Lunch en route prepared by crew. **Accommodation: Mankwe Bush Lodge.**



The amazing foresight of Chief Moremi created one of the world's most famous reserves, conserving part of the Okavango Delta and the plains to its east. The reserve covers more than 4871 square kilometres of pristine wilderness, and the varied terrain includes savannah, winding waterways, and thick forest.

- **Day 20 Chobe Riverfront BLD** **10 May 2018, 2 nights**  
A short drive northwards we arrive in Kasane, the gateway to Chobe National Park. **Chobe River Cruise.** Lunch en route prepared by crew. **Accommodation: Chobe Marina Lodge.**
- **Day 21 Chobe River Front BLD** **11 May 2018**  
**Chobe National Park Game Viewing.** **Accommodation: Chobe Marina Lodge.**



- **Day 22 Hwange National Park BLD;** **12 May 2018, 2 nights**  
**Hwange National Park.** Optional game drive by the lodge in the afternoon. **Accommodation: Sable Sands.**

- **Day 23 Hwange National Park BLD** **13 May 2018**  
**Hwange National Park.** Packed lunch during game drives. **Accommodation: Sable Sands.**
- **Day 24 Victoria Falls Zimbabwe BLD** **14 May 2018, 1 night**  
In Transit to **Victoria Falls.** **Shearwater** guided tour of the Falls. **Victoria Falls Hotel High Tea** on the veranda. **Optional** helicopter flight over **Victoria Falls.** **Accommodation: Victoria Falls Hotel.**
- **Day 25 Victoria Falls/Johannesburg** **15 May 2018**
- **16 May 2018** **Arrive in Australia**

Photos courtesy of Jenman African Safaris.  
*Whilst every effort has been made to ensure the accuracy of information in the itinerary at the time of publication, RGSQ cannot accept responsibility for the errors, changes, omissions or for descriptions which have been supplied by third party providers.*

An RGSQ Traveller Trek in association with Jenman African Safaris.



**JENMAN**  
AFRICAN SAFARIS

## UPCOMING EVENTS

### NOVEMBER: COAST TO COAST across ENGLAND A presentation of Wainwright's Classic 304 km walk across England

**When:** Tue 14 November, 9.15am for 9.30am start.  
**Cost:** \$7 including morning tea.  
**Book and Pay:** Contact RGSQ at 07 3368 2066 or email [info@rgsq.org.au](mailto:info@rgsq.org.au) by Tue 7 November.  
**Venue:** RGSQ Auditorium, "Gregory House", 237 Milton Rd



*Nine Standards Rigg on a high point of the Pennines half way across England, courtesy of Ron Owen.*

There are many long-distance walks in the UK but probably the best known is that from the Irish Sea at St Bees Head to the North Sea at Robin Hood's Bay. Created by Alfred Wainwright, a legendary fell walker, guidebook writer, and illustrator, this walk in Northern England passes through some of the most beautiful and varied scenery in the country. It passes through three major geographical regions being: the rugged mountains and beautiful lakes of the Lake District, the rolling hills and pretty valleys of the Yorkshire Dales, and the extensive heather moorland of the North York Moors. There is dramatic coastal scenery at both start and finish, and in the Yorkshire Dales dry-stone walls and green valleys that support cultivated crops and grazing of sheep and cattle. The walk was completed by six friends in 17 days averaging 18 km per day during a midyear drought when there were water restrictions in London. Navigation was based on having a detailed guidebook and quality Ordnance Survey topographic maps backed up with compass and hand-held GPS.

**Coordinator: Ron Owen**

### NOVEMBER: QUEENSLAND PARLIAMENT HOUSE HIGH TEA

**When:** Friday 24 November, 10.30am - 12.00 noon  
**Where:** Strangers' Dining Room **Cost:** \$47.00 and payable to the RGSQ office by Fri 17 November.



*Parliament House, Brisbane, seen from the end of George Street, Brisbane. Image: Wikipedia, CC BY-SA 3.0*

High Tea will be followed by an optional tour of Parliament House commencing at 12.00 noon for approximately half an hour which will be followed by a visit to the O'Donovan Library at 12.45 pm.

Tour numbers are limited to twenty so if you are interested please register now to avoid disappointment. All who attend are kindly requested to provide photo identification on the day. Failure to comply will result in your inability to take part in this outing. Dress is smart casual.

RGSQ members will meet on the corner of George and Alice Streets outside the Parliamentary gate at 10.10am.

We will then move on to the Parliamentary Annexe entrance where a member of the Parliamentary staff will escort us to the Strangers' Dining Room. **Please note:** There is no visitor parking available at Queensland Parliament House. Hope to see you there! **Coordinator: Leo Scanlan**

## DECEMBER: "Lost Leichhardt" Day Outing

**When:** Mon 18 December, 10:30am

**Cost:** \$10 pp, lunch at participant's cost

**Book and Pay:** Contact RGSQ at 07 3368 2066 or email [infor@rgsq.org.au](mailto:infor@rgsq.org.au) by Fri 8 December



*Plaque unveiled by the RGSQ on December 17, 1945. Photo courtesy of Ross Gardner.*

Friedrich Wilhelm Ludwig LEICHHARDT (naturalist and explorer) who left Mount Abundance Homestead near Roma in April 1848 on the last of his many expeditions and disappeared without trace (except for the brass gun plate currently in National Museum of Australia) has been found in 217 North Quay by RGSQ member, Ross Gardner.

Join his day trip to the site of the old RGSQ building and plaque unveiled by the Society on the 17<sup>th</sup> of December, 1945 to celebrate the centenary of the success of their first Expedition from Brisbane to Port Essington on 17 December 1845. We hope to dignify the occasion with a minute's silence.

Afterwards continue down Makertson Street to nearby Roma Street Parklands Café for lunch at 11:30 am for an hour or two.



## December: RGSQ Christmas Celebration

**Date:** Tue 5 December

**Venue:** RGSQ Auditorium, 237 Milton Rd

This year RGSQ is going back to its roots with a party at the Milton premises (might be our last celebration in Milton)

**RSVP:** for catering purposes please contact the RGSQ Office at 07 3368 2066 or email [infor@rgsq.org.au](mailto:infor@rgsq.org.au).

## SPECIAL INTEREST GROUPS

### ● KEN SUTTON

#### MEMORIAL LIBRARY GROUP

**When:** Monday, November 27, 2017

**Time:** 9:00 am

**Where:** "Gregory House", 237 Milton Rd.

### ● MAP GROUP

**Report:** OCTOBER gathering presentation:

*"Thematic Mapping - 50 Years Ago"*, presented by long time RGSQ member, former RGSQ President and Map Group member - Peter Lloyd.

Peter worked as a geographer, alongside cartographers, back in the 1960s, and made input into the second series of the **Atlas of Australian Resources**, published by the Department of National Development at the time. RGSQ has a copy of this magnificent Atlas, along with the separate booklets that accompanied the Atlas.

*Peter Lloyd making his Presentation. RGSQ's copy of the Atlas and booklets are on the table. On the Screen is an image of a 1960's counting machine!*



## UPCOMING MAP GROUP GATHERINGS AND EVENTS:

### NOVEMBER 2017

**Key Event: Map Group Canberra Trip**

**Dates: Monday 20 to Friday 24 November 2017.**

**15 members of the Map Group are going on this trip and they will be further advised, via email, of trip details. Visits are planned to:**

- National Library of Australia (NLA) - Map Collection
- Geoscience Australia - Special tour on Australian geosciences
- National Museum of Australia - Explorers and relics exhibits
- Australian War Memorial and Museum - Military maps and general exhibits

### DECEMBER 2017 Gathering

**Monday 4 December 2017 - END OF YEAR SOCIAL, 10am to 12 noon/thereabouts.**

➤ **Venue:** Auditorium, Gregory House, 237 Milton Road, Milton.

➤ **Program:**

**9.30am to 10.00am** - set-up for morning tea

- **10.00am to 10.45am** - brief presentation by Ian Francis on *"A Short Basic Introduction into Lidar"*, followed by a Question and Answer Session
  - **10.45am to 11.30am/12 noon** - morning tea
    - Each attendee to make a \$2 contribution to cover costs of tea, coffee, sugar and milk
    - Each attendee to bring along one of the following:
      - ❖ Biscuits (a variety is mandatory!)
      - ❖ Cake (simpler the better)
      - ❖ Fruit Salad (summer type fruits), or
      - ❖ Savoury dish (some like it hot! - wasn't that a movie?)
  - **12 noon to 12.30pm** - clean up
- Note: Map Group gatherings are open to all RGSQ members.

## RGSQ Suppers at the Monthly Meetings 2017

Thanks to the following for the delicious suppers during the year:

*Helen Sutherland, Ros Boardman, Linda Austin, Glenda Grimley, Bob Reid, Sarah Barry, Kay Rees, Kev Tees, Bob Abnett, Barbara Odgers, Sharyn Scanlan, Margie Keates, Tracey Griggs, Susan Lambert, Lillian Woods, Wayne McKenzie, Emil Zwetsloot and Heather McGrath*

---

**Mary Comer, Coordinator RGSQ Lecture Suppers**

---



---

*Bob Abnett, Coordinator, Map Group*

---

## Geographers take over Kangaroo Island during the 2017 Geography's Big Week Out



*Geography's Big Week Out 2017, Kangaroo Isl, South Australia. 16 high performing students selected based on their results in the 2017 Australian Geography Competition. Courtesy of Margaret Mclvor.*

At the beginning of October, RGSQ together with the Australian Geography Competition Committee (AGCC) and representatives of the Geography Teachers' Association of South Australia (GTASA) worked tirelessly to organise a successful 2017 Geography's Big Week Out (GBWO) on Kangaroo Island.

Every two years GBWO is hosted by a different Affiliate of the Australian Geography Teachers' Association, with the Geography Teachers' Association of South Australia hosting this year's six-day residential programme.

During the week, students were supervised by GTASA members: Liam Sloan, Simon Roos-Freeman, and James Howard and AGC Committee and RGSQ members: Margaret Mclvor and Kath Berg. Assistance with catering during the week was provided by Bill and Mary Sloan, and Olivia Sloan.

*The focus for the students was sustainable development and tourism on Kangaroo Island, and they were introduced to the Island's various environments, conservation parks, as well as indigenous, residential, commercial, and local government interests.*

The sixteen students attending GBWO are selected from high performing Year 11 students across Australia who have sat the 2017 AGC. This year's students were a great bunch of students who took a lot of interest and enthusiastically participated in all activities. The assessment of the student's work is currently underway, and four students who attended this year's GBWO will be selected to represent Australia at the International Geography Olympiad in Quebec City, Canada in August 2018.

---

## Volunteers Needed

Dear members, RGSQ will need the help of a couple volunteers for the mail out of Australian Geography Competition promotional materials to all secondary schools around Australia. The job is simple and will involve placing materials in envelopes.

At this point the exact days are unknown, but we're estimating early November. If you can spare a couple of hours, we'd appreciate your help. Please let us know by contacting the RGSQ Office at 07 3368 2066 or email [execofficer@rgsq.org.au](mailto:execofficer@rgsq.org.au). Thank you.

# RGSQ Bulletin

November 2017

**Lecture of the Month: Tue Nov 7**

*"Medicine - on Ice and on the Rocks", by Dr. Andrew Peacock*

**Tours and Activities: Tue Nov 14 – Coast to Coast across England; Fri Nov 24 – Queensland Parliament House High Tea**

**Map Group: Mon Dec 4 - END OF YEAR**

**SOCIAL**, 10am to 12pm, "Gregory House", 237 Milton Rd, Milton.

**Ken Sutton Memorial Library: Mon Nov 27**, 9:00am, "Gregory House", 237 Milton Rd, Milton.  
*Council meetings are held on the second Tuesday of each month.*

The Royal Geographical Society of Queensland Inc  
"Gregory House", 237 Milton Road, Milton Q 4064

POSTAGE  
PAID  
AUSTRALIA