



RGSQ Bulletin

April 2018

Vol 53 no 3

ISSN 1832-8830

Published by The Royal Geographical Society of Queensland Inc., a not-for-profit organisation established in 1885 that promotes the study of geography and encourages a greater understanding and enjoyment of the world around us.

Patron: [H.E. Paul de Jersey AC, Governor of Queensland](#)

President: Dr Iraphne Childs

■ From the President

Dear Members, our first lecture meeting at the Magda Artz Hall in Bardon on Tuesday 6th March was well-attended and the hall functioned well for our purposes. The speaker on the night, Annette Henderson on "Gorillas in my Soul", was excellent. Annette gave the audience a really personal view on the status and conservation of lowland gorilla populations in West Africa from her own, very challenging and sometimes very disturbing experiences. As we have now confirmed that the venue has a congenial atmosphere and is quite suitable for our monthly lectures, I hope to see many members at Magda Hall for our next lecture in April.

I would like to reflect here on our Membership level and composition – critical issues for the Society's future. The profile of RGSQ membership continues to comprise mainly middle-aged, pre-retirement and retired people who bring much valued experience from many walks of life and great enthusiasm to the various Society activities and special interest groups. It is important, however, to continue to attract younger members. This is difficult with the vast range of recreational and semi-professional activities, work and family commitments which compete for people's time nowadays. Many younger professional geographers starting out in their careers, and younger families with school-aged children who may once have joined the Society to go on special trips now organise their own trips online and travel in their own 4WDs which are ubiquitous. How to foster their interest in RGSQ and increase our membership is a perennial issue.

Council has often discussed this problem. Evening lectures are popular and are attended mostly by regular members. When opportunities arise, perhaps members could invite along any friends and acquaintances who may be interested in our lectures and activities. In future we will be looking at ways to advertise these events more widely.

We usually gain some new members who join RGSQ when they participate in our day-trips and overseas travel programs. We have university academic staff on Council and among the membership. The Society has recently recruited more student members, but more could be done to raise the profile of RGSQ within academic/university and also professional/government circles. All suggestions will be gratefully received!

One special interest initiative which may help in this regard is the newly-formed "Young Geographers" group. We are grateful to John Tasker (former UQ student and 2016 Keith Smith prize recipient) and Giselle Pickering (UQ Geography student) for setting up and leading this group. This is a space in which tertiary geography students and early to mid-career professionals can socialise, network and explore career pathway opportunities. The group aims to build the student and young professional membership base of the society and to improve the engagement of younger members in society activities. Future goals include a broader range of career networking or development activities and potentially extending the reach of the group to engage with and inspire high school aged students to consider geography as a future career pathway. Well done and good luck Young Geographers!

Coming up in April:

Our monthly lecture on Tuesday April 2, "*Australia's Day*" - *the search for a national "Day" in early 20th century Australia* by Dr Mark Cryle, historian and teacher at the Magda Community Artz Hall, 80 Boundary Rd Bardon and on Tuesday 17 April, the field trip to the Mooloolah River Landcare nursery organised by the Sunshine Coast Branch Committee, at Glenview. Details follow in this Bulletin.

Dr Iraphne Childs, President

RGSQ COUNCIL

President: IrAPHNE Childs

Vice Presidents: Peter Griggs

Secretary: Margaret McIvor

Treasurer: Chris Spriggs

Councillors: Bob Abnett

Paul Broad
Jennifer Carter
Duncan Cook
Ian Francis
Leo Scanlan
James Shulmeister

CONTRIBUTORS

Mark Cryle
IrAPHNE Childs
Wendy Davis
Bernard Fitzpatrick
Ian Francis
Audrey Johnston
Wayne Mackenzie
Giselle Pickering
Leo Scanlan
Ian Stehbins
John Tasker
Photography:
Ian Stehbins, Kay Rees,
Mark Cryle, Alan Victor, UQ-
SEES archives

HOW TO DONATE TO THE ROYAL GEOGRAPHICAL SOCIETY OF QUEENSLAND

RGSQ is a Registered Charity and all donations can be tax deductible if given for Educational or Environmental Purposes. Donations can be made

- in cash
- by cheque
- by credit card, please contact the RGSQ Office on 07 3368 2066
- or directly crediting our bank account.

Account name – Royal Geographical Society of Queensland;
BSB: 034 072, Account number: 211 734.

A tax-deductible receipt will be issued if required for every donation gratefully received.

WELCOME NEW MEMBERS

We have much pleasure in welcoming Mr Caleb Mattiske, Miss Bonnie Wu, Mr Neil Bradley Simson, Mr Ruslan Puscasu and Lilia Darii as new members. We hope your association with your new Society is long and mutually enjoyable.

APRIL LECTURE

“Australia’s Day”: the search for a national “Day” in early 20th century Australia

by Dr Mark Cryle, published historian, presenter and teacher

Date: Tuesday, April 3

Time: 7.30pm-9pm

Venue: Magda Community Artz Hall, 80 Boundary Rd Bardon

<https://www.magdacommunityartz.org/tablet/about.html>



There is a tendency to scan the past for the origins of any institution in the search for some sort of high moment of heroic invention and triumphal ascent into public prominence. The reality is often quite different. What the historian finds is something much messier – a national discursive fabric cluttered with loose, stuttering strands – some of which have continued to exist in some form and some of which are now confined to the footnotes of history books.

The recent public clamour and tensions around the significance of 26 January in our history is not a recent phenomenon. One hundred years ago Australians were discussing the merits or otherwise of a range of possible contenders for the position of the national “Day”. Many were well-disposed towards identifying an historical landmark which purportedly transcended regional and political affiliations and was worthy of reverence. Few could agree on what that day should be. Anniversary Day, Foundation Day, Empire Day, Wattle Day, Landing Day, Australia Day (24 May), Eureka Day, Melbourne Cup Day and others all had their advocates. In 1916 Anzac Day joined the pack and immediately (yet temporarily) assumed prominence.

Dr Mark Cryle is a published historian, presenter and teacher. In 2015 he completed a PhD on the origins of Anzac Day to 1918. In 2016 he was awarded a Q Anzac 100 Fellowship from the State Library of Queensland. He was formerly the Manager of the Fryer Library at the University of Queensland. Mark has researched, written and presented on aspects of both Australian and British history and literature, including race relations, labour history, sport and politics. He has also conducted workshops on cross-cultural training. In another life Mark is a musician and songwriter.

Photo: Courtesy of Mark Cryle.

NEW RGSQ website going live in late April

The new RGSQ website, which incorporates an online membership system, will be going live by the end of April 2018. When this happens, the Society’s web address (www.rgsq.org.au) will stop linking to the current old web pages and go to the new website.

Those members who receive the Bulletin and Society notices by email, AND any who have provided us with an email address, will be notified as soon as it is live.

As well as providing a better way of informing the community about RGSQ, the new website will allow members and guests (where appropriate) to

- ✓ lookup the latest calendar of the Society’s events, activities and lectures;
- ✓ book and pay online for Society activities;
- ✓ renew and pay annual memberships online (potential new members can apply online).

There will be a private section where every individual member can log in to see information for “members only”. Members will also be able to securely update their personal “profile” – the information they have provided the Society about themselves.

To assist members with use of the new website, the June 5th Tuesday evening meeting/lecture will be dedicated to the new website. Members will be provided with an overview of the new website followed by hands-on assistance with using it. Bring your own device (laptop, apple or mobile phone – we will provide a Wi-Fi network link) on Tuesday 5th June and explore our new website. We will have some laptops for use on the night for those members who are unable to bring a device.

Sessions will be held in the RGSQ office for those members who cannot make the evening of Tuesday 5th June and would like assistance with using the new website. Dates and times for these sessions are yet to be determined.

The new system uses email addresses for logging in and for communication, if members wish. We would therefore like to get a current working email address for each member of the Society, including individuals included in Household memberships. If you don’t think we have your latest email address either email it into the office at info@rgsq.org.au (please include your membership number as shown on your latest renewal notice) or bring it along to the information evening on Tuesday 5th June.

UPCOMING EVENTS



APRIL: Field trip Mooloolah River Landcare Nursery

Tuesday 17 April, 9am-12pm

Location: 2670 Steve Irwin Way, Glenview.

Cost: \$10

Book and Pay: please contact the RGSQ Office on 07 3368 2066 or email admin@rgsq.org.au by Fri, March 30.

The Biodiversity Officer will demonstrate her biodiversity experiments pertaining to the "Cat's Claw Creeper" and the Jewel Beetle and the "Madeira Vine" and the Madeira Vine beetle, for approximately 30 minutes. A nursery representative will then show the process of preparing a plant for sale in the nursery, with some "hands on" experience by the participants, approximately 90 minutes. Members are encouraged to bring seeds in for the demonstration & allow MRWL to grow them for future sales. Time will be set aside for participants to purchase native plants. Please organize your own transport and bring your morning tea and chair.

Coordinator: Wendy Davis

APRIL: Visit to Osprey House Environmental Centre

Tuesday 24 April

MEET at the centre by 11.30am to enjoy a BYO picnic lunch. Address: [Dohles Rocks Road Griffin](#).

BOOK with the RGSQ office – 07 3368 2066 or admin@rgsq.org.au

PAY by 10th of April

COST \$10.00 per person

Set among the mangroves lining the banks of the Pine River is Osprey House Environmental Centre. With a low tide at about 1.00pm expanses of muddy flats will be exposed making a feeding ground for a variety of water birds and raptors, up to about 20 different species possible. We might see an Osprey, we might see a koala. After lunch volunteers from the centre will help us identify different species and tell us about the importance of mangroves.

Be SunSmart, wear walking shoes, and bring a picnic lunch, water bottle, binoculars and camera. Bring your friends along.

Coordinator: Audrey Johnston.

MAY: Visit to Beenleigh Rum Distillery and Poppy's Chocolate Factory

When: Wednesday 30 May | 8:00am – 4:30pm

Departure: 8:00am - Park Ave Eagle Junction
8:20am – Park n Ride Mains Rd Nathan

Cost: \$65.00 members / \$68.00 non-members (based on 25 participants). Includes bus cost, morning tea and tour/tasting at Distillery and Poppy's.

Pay by: Monday 30th April 2018.

Lunch: Own cost at Beenleigh RSL.

Home: Drop-off at Mains Rd and Eagle Junction. Last drop-off at 4:30pm.

Dress: Closed shoes must be worn, access is not conducive to wheelchairs, walkers or prams.

We would love you to join us on a bus tour to the Beenleigh Artisan Distillery and Poppy's Chocolate Factory.

The tour includes morning tea, Tour and Tasting at the distillery followed by lunch (own cost) at the Beenleigh RSL after which we shall visit the Poppy's Chocolate Factory.

Beenleigh Rum was established over 130 years ago and still operates from their original site on the banks of the Albert River.

Join us for a tour of the distillery followed by an included tasting of selected products from either the "Classic Rum Experience" or the "Distiller's Selection". Products are also available for purchase, for those who wish to indulge. Our tour will be followed by lunch.

Following lunch, we will travel to poppy's Chocolate Factory where we will be greeted with gourmet samples to taste prior to being enlightened about the craft of chocolate making and shown a glimpse of the art. Each member will be presented with a 'goodie' bag containing 5 different chocolates to take home (or consume on the way).



Photo by [NordWood Themes](#) on [Unsplash](#)

Tour numbers are limited to 25, so, please register with the office now to avoid disappointment and please advise the office of your preferred pick-up / drop-off point.

Coordinator: Wayne Mackenzie

AUGUST: Field trip | Friday 17 - Sun 19 August

A weekend for guided exploration of the Upper Yabba catchment, specifically Yabba Falls and Kingaham Gorge (Ochre Falls, Tumbled Valley, Broken Femur Falls et al).

Coordinator: Ian Stehbens

Expressions of interest only by Friday April 27.

Please contact the RGSQ Office on 07 3368 2066 or admin@rgsq.org.au.

Cost: tba

The old geologies of the area provide some baffling questions and a wide variety of landforms including moderate and massive jointing in granitic outcrops, surprising volcanic intrusions and vent, and strongly jointed metamorphic structures. The Mary Catchment has captured some of the upper Burnett catchment via Yabba and Kingaham Creeks. The weekend is appropriate for a range of fitness levels:

- easy but rough walk to top of Yabba Falls and Weaner Rock;
- moderate challenge due to length of slopes gives access into Kingaham Gorge and also into Gates of Yabba;
- abseiling descent into awesome Baiyambora Gorge with challenging return hiking ascent.

Staying at Imbil in your choice of accommodation: Imbil Country Cabins (economical quality accommodation) or B&Bs or camping at Deer Park, camping at Imbil Island Reach Campground, or at Borumba Dam camping area.

Borumba Deer Park www.borumbadeerpark.com:

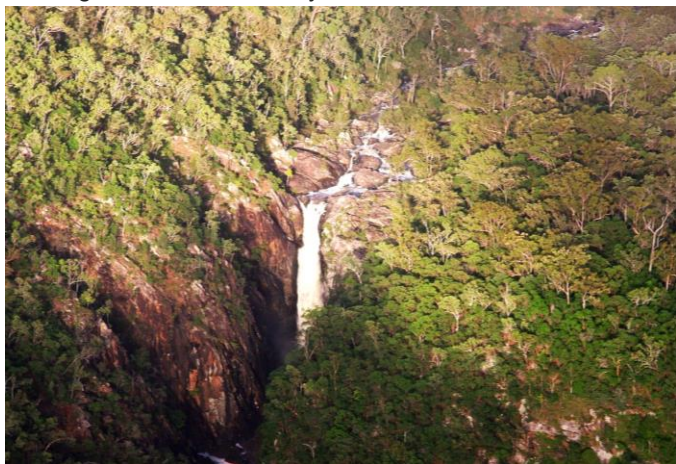
Camping \$15pp pn.

Budget Cabins \$75 for first 2 persons pn, + \$15 per extra adult.

Deluxe Cabins \$95 for first 2 persons pn, + \$15 per extra adult.

Own Van \$32 for first 2 persons pn +\$17 per extra adult. Alternative quality accommodation (rating by the trip Coordinator ****) at **Imbil Country Cabins** for up to 6 persons (1 Queen, 2 bunks, 1 double fold out sofa) is \$181 pn.

Access to the field site from Imbil requires a 4WD vehicle, so we will be carpooling for those who do not have a 4WD. People need to assemble at Borumba Deer Park, Yabba Creek Road, IMBIL by 7.30am on the Saturday morning and again on the Sunday morning. This trek will involve two days, returning to Imbil on both days.



Top plunge -Yabba Falls, the first 60m of the 160m fall. Courtesy of Ian Stehbens.

NOVEMBER: TASMANIA

Calling for Expressions of Interest

(by 30 April 2018)

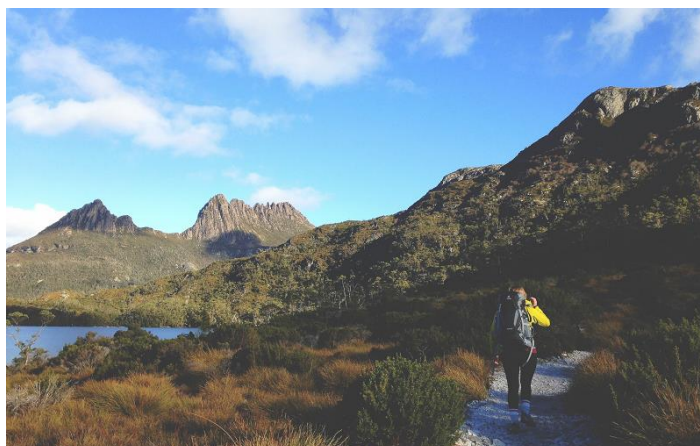


Photo: Cradle Mountain, Tasmania, by Roxanne Desgagnés on Unsplash

We are planning a 14-night, 15-day Fly/Drive Trek to Tassie from 1st November to 15th November 2018 and are seeking expressions of interest from members.

We would fly out of Brisbane into Hobart, collect hire vehicles (sedans) at the airport and meander around Tassie with booked accommodation.

The plan is to use Hobart as an initial base for 6 days to explore Port Arthur and surrounds; Richmond and surrounds; Hobart including Salamander Markets (for those interested), MONA, Wrest Point etc. and Bruny Island. Own cost options for Tours and /or Cruises etc. are not included in our Budget Costs.

We would then travel to Strahan staying two nights. Options would include visiting Queenstown with own cost options for a Gordon River Cruise, Wilderness Railway etc.

From Strahan we would visit Cradle Mountain and Dove Lake on our way to Burnie where we would stay two nights. From Burnie we would visit The Nut in Stanley then on to Smithtown and back to Burnie to visit the Paper Mill and watch the Penguins.

The following day we travel to Ulverstone (Lillico Beach), then Devonport (Mercy Lighthouse), Beaconsfield (Mine and Heritage Centre) and on to Launceston where we stay for three nights. From Launceston we have the options of exploring Cataract Gorge, Pyengama (St Columba Falls), St Helens (Perron Dunes), Binalong Bay (Bay of Fires), Scamander, St Marys (Fingal Valley White Knights), Mathina Falls, Launceston and nearby wineries.

We then travel from Launceston to Hobart visiting Bicheno, south to Rocking Rock and Blowhole, Cape Tourville with an easy boardwalk for cliff-top views, Swansea (Spikey Bridge), Cape Berry Farm, Triabunna Visitor Centre through Orford to Hobart where we stay overnight before departing the next day for home.

A budget cost at this stage is around \$2500.00 **per person**, including airfares, vehicle hire and accommodation, based on twin share (or double) and two persons per vehicle.

We are planning on a maximum number of participants of 20 people.

If you would like to register your interest in this trek, please contact the office ASAP at 07 3368 2066 or email admin@rgsq.org.au to place your name on a list of interested persons before 30 April 2018

More detail can be provided once we have an idea of the number interested.

Coordinator: Wayne Mackenzie

SPECIAL INTEREST GROUPS

KEN SUTTON MEMORIAL LIBRARY GROUP

When: Monday, April 23

Time: 9:00 am

Where: "Gregory House", 237 Milton Rd.

VOLUNTEERS NEEDED

The Library Group requires someone who would be willing to assist with organising RGSQ library material. No experience needed. If you are interested, please email Peter Griggs at peter.griggs1960@outlook.com.

MAP GROUP UPCOMING GATHERINGS & EVENTS

Over the next 3 months we will have the benefit of hearing two interesting speakers and a visit to the Queensland Maritime Museum where we will see more than is accessible to the general admission. For non-Map Group members, if you see an event that interests you please contact the Map Group Co-ordinator Bob Abnett (mob 0412-135-794) who will be able to provide more information.

If you would like to see the calendar of events for the remainder of 2018 please contact Ian Francis (email brisfran@gmail.com), a copy of the calendar will be forwarded to you.

APRIL

Monday 9 April @10:00am - 12:00pm

Gathering Presentation: *The Jardines and Exploring Cape York* by Grahame L. Jardine-Vigden.

Details: Grahame is a descendant of the Jardines and does regular photographic presentations on the Jardines to interested groups.

Location: 11 Kerriane Place Moorooka 4105

Cost: gold coin donation for tea and coffee

Co-ordinator: Bob Abnett

(07) 3820-2621; 0412-135-794

em: abnett@powerup.com.au

MAY

Wednesday May 16 @10am - 12pm

Event: Visit to Queensland Maritime Museum, followed by lunch at the Ship in Hotel

Details: Expanded access to the Museum's artefacts thanks to Map Group member Peter Nunan. Examination of samples of the Museum's nautical charts followed by a museum tour. After the tour we will have lunch at the Ship Inn Hotel. Those interested in exploring more of the Maritime Museum may return after lunch.

Location: South Bank, 412 Stanley St, South Brisbane QLD 4101

Transport: Members to make own arrangements. No onsite car parking.

Cost: Chart & Map display and discussion free, site tour

\$12.00 + lunch (\$10-\$22)

Co-ordinator: Ian Francis

(07) 3266-2285; 0457-628-033; em: brisfran@gmail.com

JUNE

Monday June 4 @10:00am - 12:00pm

Map Group Gathering

Presentation - Mapping Brisbane History by Neville Buch

Details: Neville has been undertaking the project of mapping Brisbane's history in association with the Brisbane City Council and local historical societies.

Location: 11 Kerriane Place Moorooka 4105

Transport: Members to make own arrangements

Cost: Gold coin donation for tea and coffee

Co-ordinator: Bob Abnett

(07) 3820-2621; 0412-135-794;

em: abnett@powerup.com.au

Map Group Event Report

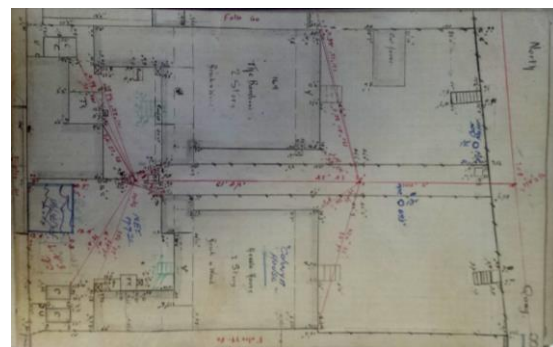
By Ian Francis, RGSQ Map Group member

On 20th May eighteen members of the Map Group visited the Brisbane City Council Archives at Moorooka. Kate Harbison was our enthusiastic host who took us through static and electronic displays of maps and mapping related information.

The BCC archives has many fine maps of early Brisbane and most in remarkable condition. The group was transfixed by the quality and penmanship of the material displayed. Many discussions were generated from the various exhibits.

One of the highlights of the tour were the old surveyor's field books from 1910 onwards. The penmanship and detail in these books is exquisite.

Afterwards the group had lunch in the Red Lion Hotel at Moorooka. The day was another successful event for the RGSQ Map Group.



F1911
Surveyor's
log book,
courtesy of
Ian Francis.

YOUNG GEOGRAPHERS GROUP



https://www.facebook.com/groups/379870585818842/?source_id=137379932950619

For the latest group news and to keep in touch with upcoming events please join the RGSQ Young



Geographers' Group on Facebook.

Continued page 6.

Late April

Student Project Presentation Seminar, possibly at CSIRO EcoSciences Precinct library, Dutton Park (venue to be confirmed). This hour-long seminar includes presentations from three late undergraduate, honours and/or postgraduate students on their current research. This will be a great opportunity to learn about fellow students' research experience, practice your scientific communication skills and to network with other attendees. The event will be an open invitation to all RGSQ members and relevant Qld Government and EcoSciences Precinct employees.

June

Mid-year group gathering at the University of Sunshine Coast. There will be a social BBQ evening and some short student presentations before attending the RGSQ Sunshine Coast Group lecture "Balloons to Blackbird: a brief history of photo intelligence" by Ken Granger. Transportation to be provided (TBC).

On Conservation of the West African Gorillas

Personal Synopsis of the March lecture - 'Gorillas in my Soul'

By Leo Scanlan, RGSQ member



Photos from the March Lecture "Gorillas in my Soul" held at Magda Community Arts Hall; courtesy of Kay Rees.

I went along with no pre-conceptions about the content of RGSQ's monthly lecture on Tuesday, March 6 at the Magda Community Arts Hall in Bardon. I had no abiding ambition to rescue primates but was completely blown away with Annette's story and her journey in Gabon, West Africa.

This story is a great conservation story in itself which can be applied to many of the other great conservation stories to come out of Africa. To date, I haven't read Annette's book, 'Wild Spirit', but it's now on my list of to-do's in the not too distant future and it's not hard to see how Annette became so deeply involved in this great African conservation journey.

I must say I haven't as yet had the 'pleasure' of coming face to face with the gorillas of Africa. However, if I keep going back to Africa, some time I'm bound to run across the gorillas. Annette's lecture this evening has brought back many happy memories of the wonderful people and places that I have visited in Africa and the interlocking story of looking in on a huge conservation effort along the way.

In the prelude to one of my past treks for the Society to Africa, I mentioned that we may be one of the last generations, or perhaps the last, to view the vast array of animal species that inhabit Africa. The pressure on these most precious parts of our planet is really part of a conservation effort we just cannot afford to lose. Thanks Annette for sharing your story this evening and giving me further inspiration to explore what else is tucked away in different parts of Africa.

My own experience in seeing Sweetwater Chimp Conservancy in Kenya and from the stories coming from the pages of National Geographic related to Dian Fossey, Jane Goodall, Dame Daphne Sheldrick and of course at home here in Australia we can draw inspiration from people like Deborah Tabart who is so passionate about the preservation of our own spectacular Koalas.

Next year, 2019, with the help of the Annette Hendersons of this world and drawing on my own experience, I'm hopeful that I can inspire some of you to join with RGSQ Traveller and accompany me on a new journey of discovery and see firsthand some of the great national parks and conservation stories in Africa first hand. ●

RGSQ Traveller

Geographical Discovery Tours

Coming up in 2019:

April/May 2019 – discover Central Africa: **Nairobi to Victoria Falls**.

September 2019 – discover **Umbria and Puglia** – Italy's 'green heart' known for its rich cultural heritage and medieval history.

Watch this space – dates tba.



Photo: Montepulciano, Italy, by Rowan Heuvel on Unsplash.



Vale, Dr Elise Lindgren

27 February 1927 - 28 December 2017
(married name Tugby, née Sellgren)

Photo supplied by Alan Victor, UQ-SEES archives.

Elise was a continual member of RGSQ from 1969 until 2017.

Master of Science, The University of Sydney, 1955; Doctor of Philosophy, The Australian National University, 1964. Lectured at The University of Queensland, Department of Geography (and successors) 1961 to 1994.

Born in Griffith, New South Wales, Elise initially graduated as one of very few female geologists. Principally a scientist, her other academic pursuit was cultural and regional geography. With her then husband, anthropologist Dr Donald Tugby, she undertook several decades of field work from the late 1950s in South-east Asia, focussed upon the Mandailing matrilineal society in remote northern Sumatra and others in southern Thailand.

Elise was a citizen of the world, always questioning human motivation and directions. She legitimised studies of South-east Asia in The University of Queensland's Department of Geography, then essentially Euro-centric in outlook. She likewise pioneered environmental studies, introducing the university's first Environmental Conservation course and engaged in conservation debates in Queensland and Australia. For example, campaigning for the rehabilitation of Stradbroke Island following sandmining. Like many academic women of her time, Elise was under-acknowledged for her ideas and innovation, her steadfastness and her impact in the academic and research worlds.

After completing my Ph.D. at the University of Hawaii, I first met Elise in 1984 on returning to Brisbane when I applied for a lectureship in human geography at The University of Queensland. The interview panel comprised three male members and Elise, the only female academic geographer at the time. I remember her supportive and encouraging remarks. Over the next decade Elise and I were the only women on the academic staff of the Geography Department. We became close friends and taught together in the South-east Asian and the Geography of China courses. I much admired her knowledge about these regions and her field-based experiences of their cultures. She was a champion of improving women's roles and achievements in academia and society at large. She graciously mentored me as a junior colleague, and provided a role model for dealing with students, departmental politics and the, sometimes, challenging nature of university administration.

Elise will be greatly missed.

By Iraphne Childs, RGSQ President

Volunteers to assist with the 2018 Australian Competition



In April, the Competition will again require assistance from Society members.

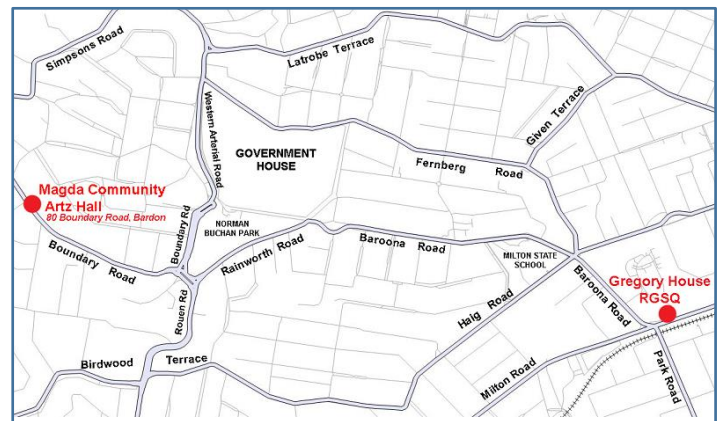
April Tuesday 24 to Friday 27, but not Wednesday 25 (ANZAC Day) – **Question booklets and Answer sheets mailout**. This requires counting/weighing of Question booklets and Answer sheets and placing them in large envelopes, post satchels or boxes. This is a complex mailout, which takes a few days to complete with 6-8 volunteers required each day. In the last few years it has taken about three days to complete the sorting and packing. The mail-out will take place at RGSQ in Unit 2, on the first floor.

If you are available on any of the days, we would love to hear from you. Please contact us on 07 3368 2066 or email admin@rgsq.org.au.

Getting to Magda Community Artz Hall

[80 Boundary Rd, Bardon QLD 4065](#)

See enclosed map



There is no off-street parking provided by Magda.

Please be mindful of immediate neighbours and do not park in front of their homes.

Parking is available along Boundary Street and in side streets such as Haining and Stoke Streets.



If you would like to contribute a story to one of our upcoming Bulletins, please feel free to email your ideas and suggestions to info@rgsq.org.au.

Copy submission deadlines the RGSQ Bulletin:

May 2018 Bulletin – Thursday April 12

June 2018 Bulletin – Thursday 17 May

July 2018 Bulletin – Thursday 14 June

RGSQ Bulletin

April 2018

March lecture: Tuesday April 3

“Australia’s Day”: the search for a national “Day” in early 20th century Australia, by Mark Cryle

Tours and Activities:

Tuesday 17 April – Fieldtrip Mooloolah River Landcare Nursery

Tuesday 24 April - Visit to Osprey House Environmental Centre

Map Group: Monday 9 April – Presentation:

The Jardines and Exploring Cape York by Grahame L Jardine-Vidgen

Ken Sutton Memorial Library: Monday April 23, 9:00am, “Gregory House”, 237 Milton Rd, Milton. Council meetings are held on the second Tuesday of each month.

The Royal Geographical Society of Queensland Inc
“Gregory House”, 237 Milton Road, Milton Q 4064

POSTAGE
PAID
AUSTRALIA