



RGSQ Bulletin

June 2018

Vol 53 no 5

ISSN 1832-8830

Published by The Royal Geographical Society of Queensland Inc., a not-for-profit organisation established in 1885 that promotes the study of geography and encourages a greater understanding and enjoyment of the world around us.

Patron: [H.E. Paul de Jersey AC, Governor of Queensland](#)

President: Dr IrAPHNE Childs

■ From the President

Dear Members, I would like to bring you up to date on some recent activities and to express some acknowledgements.

The search for new RGSQ premises: We are continuing investigation of various properties. The Gregory House Committee has been very busy, working with our real estate representative, to identify suitable properties within 7km of the CBD. A **BIG THANK YOU** to committee members, Bob Abnett, Paul Broad, Chris Spriggs and Bernard for their efforts in this regard. From the many properties reviewed so far, RGSQ Council has inspected and seriously considered six buildings, located in Rocklea, Toowong and Milton. While the buildings were attractive in many ways, all have drawbacks of one kind or another relating to location, price, size, layout, etc. Council has considered the pros and cons of each property with a great deal of discussion. The reality is, however, that we will probably need to compromise on some aspect of a new building. Nowhere is perfect, and you will recall that the decision to sell 237 Milton Road was, in part, determined by the fact that our current building had some major problems. We are seeking the best possible option for RGSQ future requirements and will not rush into a purchase without extensive consideration and background research. I hope to have more positive news on this over the next month or so. Meanwhile, the Society will lease our current office and meeting spaces at 237 Milton Road until the end of the year if we need to do so. Monthly meetings/lectures continue on the first Tuesdays of the month at Magda Community Artz Hall.

The Australian Geography Competition (AGC) has been very successful this year, with 782 schools and over 72,000 students participating across Australia, an increase from 2017. The AGC is RGSQ's most effective activity in promoting Geography in high schools. A **BIG THANK YOU** to the AGC Committee for their dedication in organising the AGC, to Bernard and Lilia for coordinating the AGC and creating AGC materials and to all RGSQ volunteers who work tirelessly to pack the nearly 4 tonnes of materials into envelopes, satchels and parcels for the mail-out to schools on time. Students take part in the competition in schools from 17 to 31 May.

The top male and female students in Year 11 from each State and the combined Territories, participate in the

annual **Geography's Big Week Out (GBWO)**, a six-day event on Kangaroo Island, South Australia in early October 2018. This exercise focuses on fieldwork, spatial technologies and analytical skills, allowing selection of Australia's team for the following year's **International Geography Olympiad (iGeo)**. This will be held this year in early August in Quebec City, Canada.

The new RGSQ website: The new Society website has been launched! Check it out at <https://rgsq.org.au/>.



A **BIG THANK YOU** to the website committee, Graham Rees, John Fairbairn, Ian Francis, Lilia and Bernard for the considerable time and effort that has gone into creating and setting up this much-improved website which will be a valuable portal for the Society in reaching out to members and the wider world. Among other features, the new website will allow members to look up the latest calendar of the Society's events, activities and lectures, renew and pay annual memberships online and access a private section where every individual RGSQ member can login to see information for "members only".

To find out more, come along to the Tuesday June 5th evening meeting at the Magda Community Artz Hall for a "show and tell" presentation followed by hands-on assistance with using the new website. Members of the website committee will be available to answer questions. You are welcome to bring along your laptop to "play around" on the website at the meeting. There will be some laptops for use on the night for those who are unable to bring a device.

Dr IrAPHNE Childs, President

RGSQ COUNCIL
President: Iraphne Childs
Vice President: Peter Griggs
Secretary: Margaret McIvor

Treasurer: Chris Spriggs
Councillors: Bob Abnett

Paul Broad
Jennifer Carter
Duncan Cook
Ian Francis
Leo Scanlan
James Shulmeister

CONTRIBUTORS
Iraphne Childs
Bernard Fitzpatrick
Ian Francis
Ken Granger
Peter Griggs
Audrey Johnston
Jeanette Lamony
Wayne Mackenzie
Graham Rees
Thomas Sigler
Ian Stehbens

Photography: Ian Francis, Ian Stehbens, Kay Rees, Bernard Fitzpatrick, Thomas Sigler

WELCOME NEW MEMBERS

We have much pleasure in welcoming Dr Jonathan Corcoran and Mr Matthew Dale as new members. We hope your association with your new Society is long and mutually enjoyable.

JUNE MEETING

NEW RGSQ Website - Information Evening

When: Tuesday 5 June, 7:30 pm - 9:00 pm

Venue: Magda Community Artz Hall, 80 Boundary Rd Bardon

<https://www.magdacommunityartz.org/tablet/about.html>

Registration: please RSVP under <https://rgsq.org.au/whatson>

The new RGSQ WEBSITE is now LIVE at
<https://rgsq.org.au>

The normal monthly lecture will be dedicated to introducing members to the features of the new RGSQ website. A short overview of the site and demonstration of the membership and event systems, will be followed by hands-on assistance and a Q&A session.

Bring your own device (laptop, tablet or mobile phone – we will provide a Wi-Fi network link) to explore our new website. We will have some laptops for use on the night for those members who are unable to bring a device.

As well as providing a better way of informing the community about RGSQ, the new website will allow members and guests (where appropriate) to:

- look up the latest calendar of the Society's events, activities and lectures;
- book and pay online for Society activities;
- renew and pay annual memberships online (potential new members can apply online).

The system uses email addresses for logging in and for communication; your email is the key to engaging with the new site and the RGSQ into the future. For those members who do not wish to engage in electronic communications, the existing printed and postal service will remain for the time being. We would like to get a current working email address for each member of the Society, including individuals included in Household memberships.

If you don't think we have your latest email address either email it into the office at info@rgsq.org.au, phone the office on 07 3368 2066 (please include your membership number as shown on your latest renewal notice) or bring it along to this information evening.

Sessions will be held in the RGSQ office for those members who cannot make this session and would like assistance with using the new website. Dates and times for these sessions are yet to be determined. Please ring or email the Office at info@rgsq.org.au if you would like some help.

Geographers in the spotlight

Congratulations to Professor Tor Hundloe

Emeritus Professor Tor Hundloe of UQ's School of Earth and Environmental Sciences, has been appointed as a member of the Environment Institute of Australia and New Zealand (EIANZ)'s Qualifications Accreditation Board (QAS) for a period of 3 years from 27 April 2018.



The creation of the EIANZ-QAS is a milestone achievement in the development of the environment profession in Australia and New Zealand. The QAS will do much to encourage the development of a quality education for those choosing to enter the profession and progress in their careers. Professor Hundloe is a founding member of the EIANZ, was the inaugural President and was awarded Life Membership in 1991. He was made a Member of the Order of Australia (AM) in 2003. In 2010, he was awarded the Individual Award by the United Nations Association of Australia Associations - citation 'An Environmental Pioneer'.

Among his authored books are *The Value of Water in a Drying Climate* (2012), *The Gold Coast Transformed* (2015), *Australia's Role in Feeding the World* (2016) and *Adani versus the Black-throated Finch* (2017). <https://sees.uq.edu.au/profile/9170/tor-hundloe>

Focus on Geographical Research

"The Corporate Geography of Australian Cities: Tracking change in ASX-Listed Firm Headquarters, 2013-2016"

By Thomas Sigler

Dr. Thomas Sigler, Senior Lecturer in Human Geography at the University of Queensland's School of Earth and Environmental Sciences, is working on an Australian Research Council (ARC) funded project investigating the corporate Geographies of Australian cities. The geography of firm (business company) location is a longstanding focus in urban studies. Dr Sigler's work was presented at the State of Australian Cities (SOAC) conference in Adelaide in November, 2017. Written in collaboration with Mr Ben Parker (Queensland Department of Natural Resources and Mines) and Dr Kirsten Martinus (UWA), the research has found that all major Australian cities except Melbourne lost firm headquarters (HQs) during the 2013-2016 period. A major contributing factor was the downturn in the resources sector. Cities in which mining and energy play a key role, most obviously Perth, had the greatest HQ losses, while Melbourne was the only city to gain between 2013 and 2016. The research showed that within our cities major losses in firm activity were experienced in core areas (CBDs). This was compensated to some degree by suburbs, especially inner-ring suburbs, gaining firm HQs, for example in information technology. These broad changes indicate a shift to the knowledge economy across cities in which central and CBD-fringe locations are desirable from a firm perspective.

Dr. Sigler's research was picked up by the *Australian Financial Review*, Dec 7 2017

<http://www.afr.com/real-estate/melbourne-gains-in-the-scramble-for-corporate-hqs-20171205-qzzjuu>.



Dr. Sigler with Adelaide Lord Mayor Martin Haese, who addressed the SOAC delegation on the conference's opening night. Courtesy of Thomas Sigler.

UPCOMING EVENTS



JUNE: Public lecture at the University of the Sunshine Coast

"Balloons, Blackbirds and Beyond: a short history of photo intelligence"

by Ken Granger, past President of the Royal Geographical Society of Queensland

Date: Tuesday 19 June, 7.15-9.00pm

Venue: USC, Lecture Theatre 2

During WW II, British air photo interpreters produced an in-house magazine with the very clever title "Evidence in Camera". The title not only reflected the wealth of critical intelligence gleaned from the aerial photos obtained by specially equipped aircraft over occupied Europe; it also reflected the "behind closed doors" secret nature of their work.

A good example of this work is the way that photos obtained by an RAF reconnaissance aircraft over Germany's Baltic coast in April 1943 were analysed to confirm the establishment of the V-1 flying bomb and V-2 ballistic missile test facility at Peenemünde. That analysis provided the intelligence that led to heavy air raids on the site as well as the targeting of V-1 launch facilities being built along the French coast. Had these weapons reached full operational status, the D-Day landings in 1944 may have been impossible and the outcome of the War made uncertain.

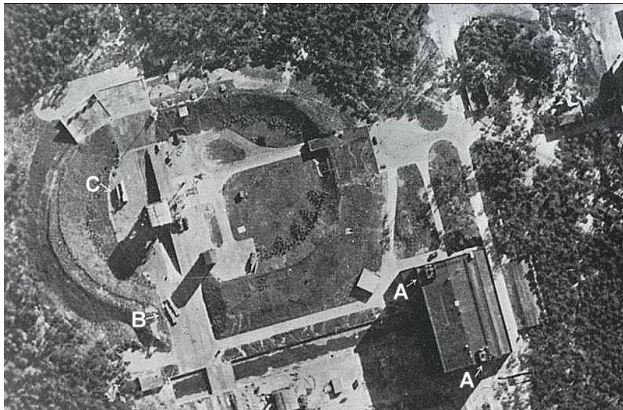


Photo: V2 test site, By No. 540 Squadron RAF Flight Sergeant E. P. H. Peek in a de Havilland Mosquito PR4[7] returned to Leuchars airfield on June 23, 1943 with Peenemünde photos showing a pair of low-loader vehicles[8] holding a pair of rockets.[2] [Public domain], via [Wikimedia Commons](https://commons.wikimedia.org/wiki/File:V2_test_site.jpg)

Neither the technology that acquired the photos nor the methods employed to analyse them were new. At the time, they were simply at the leading edge of an evolutionary stream that began as early as 1909 and continues to evolve to this day. In this lecture Ken Granger traces the history of aerial reconnaissance from the use of observers in a balloon during the Battle of Fleurus in 1794 during the French Revolutionary War, to the integrated use of high resolution imaging satellites, technologies such as GPS and GIS, sophisticated databases and spatial modelling routines to produce what is now called geospatial intelligence.

Ken is well placed to tell this story. He has been fascinated by the observation of the land from above ever since his first flight in a Tiger Moth as a 14-year-old in the mid-1950s. He was introduced to photo interpretation and simple photogrammetric tools in the early 1960s and went on to map the forest resources and land use of PNG over the next 8 years. During the 1970s and 80s he worked in the "black world" of strategic intelligence using a range of imaging systems as well as early database and computer mapping technologies. For the past 28 years he has applied these skills and knowledge to the analysis of the risks posed by a wide range of natural and anthropogenic hazards to communities and their critical infrastructures.

July: Beautiful Bribie | Thursday, July 5

WHAT: visit 2 aboriginal sites, then explore more of the island, with a guide; some walking but mostly flat

LOCATION: follow the road to the big roundabout then turn left into Sunderland Drive

MEET: Community Arts Centre (good parking), 191 Sunderland Dr, Banksia Beach QLD 4507

TIME: 9.45am

BYO picnic lunch; be SunSmart, wear walking shoes, bring a water bottle, perhaps camera & binoculars

COST: \$5.00 for members, \$8.00 for non-members

BOOK & PAY: by 25th June, either on the RGSQ website or contact the RGSQ Office at 07 3368 2066.

Arrange car-pooling where possible.

It is known that aborigines inhabited Australia between 50,000 to 55,000 years ago.

Between 1940 and 1955, a Day of Mourning or Aborigines Day was held as a celebration of aboriginal culture.

Now NAIDOC WEEK is held, not only by indigenous communities but by people of all walks of life. It celebrates the history, culture and achievements of Aboriginal and Torres Strait Islander People.

BONGAREE was born south of Sydney before the arrival of the First Fleet. Meeting Mathew Flinders the two sailed north spending two weeks exploring Moreton Bay, hence the name of the centre near the south of the island. Their first landing was at the south east point where there was a problem with the local tribes called, today, Skirmish Point.

After all these adventures you may like to enjoy a historic walk (2 available) or follow First Avenue to Woorim and the 'surf' beach.

Look forward to your company and bring your friends.

Coordinator:
Audrey Johnston



Photo: Aboriginal memorial, courtesy of Audrey Johnston

JULY: A day at Lamington National Park, O'Reillys Wednesday 11 July – self drive



MEET: 8:30am at Canungra Hub Café, Canungra. Departing to drive to O'Reilly's at 9:05am

Cost: \$10.00 members / \$15.00 non-members

Book and Pay: RGSQ Office, 07 3368 2066 or admin@rgsq.org.au by Friday 6 July or online at <https://rgsq.org.au/>.

Note: Please advise the Office of your suburb, whether driving and if you are prepared to carpool or take more passengers.

What to bring: Sturdy shoes, wet weather gear, umbrellas. Be prepared, so bring a bottle of water as well.

This is a self-drive activity to Canungra. We will carpool from Canungra to O'Reilly's. The road from Canungra to O'Reilly's is narrow, winding and being repaired after extensive damage resulting from Cyclone Debbie in 2017. There are some one-way sections controlled by lights.

We need to depart Canungra at 9:05am for the drive to O'Reilly's. The Canungra Hub Café is open from 6am to 5pm on weekdays so you might like to leave Brisbane early and have breakfast in Canungra.

10.00 am: Welcome by Ranger in Heritage Room followed by an easy 1.8km Centenary Walk, The Time Walk explaining formation of region about the National Park.

The group will then split and those interested in a bit more adventure on uneven surfaces will walk on to Picnic Rock and see ancient Antarctic beech trees – approx. 1 hour, led by Mary Comer.

The rest of the group will have time to walk the O'Reilly's Rainforest Gardens and Tree Top Walk and visit the Info Centre – more time in the Heritage Room, and/or feed the birds.

Lunch around 12.00 – either BYO picnic or cafe.

Following lunch, Bernard Fitzpatrick will talk about the Stinson plane crash and rescue which featured in Bernard O'Reilly's 1940 book "Green Mountains" and the 1987 TV Movie, "The Riddle of the Stinson" in which Jack Thompson played Bernard O'Reilly.

Leave 3pm. Stop at Canungra if desired. Arrive Brisbane 5-5.30pm approx.

Coordinators: Bernard Fitzpatrick and Mary Comer. For further information call Bernard in the RGSQ Office: 07 3368 2066.

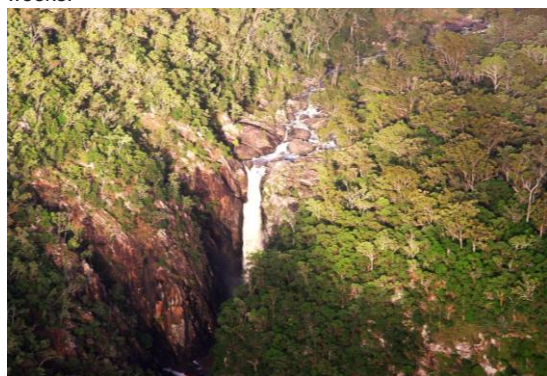
Photo: Lamington National Park – Antarctic Beech; Stinson Model A at O'Reilly's, model replica; courtesy of B.Fitzpatrick.

AUGUST: Field trip | Friday 17 - Sun 19 August

A weekend for guided exploration of the Upper Yabba catchment, specifically Yabba Falls and Kingham Gorge (Ochre Falls, Tumbled Valley, Broken Femur Falls et al). **Coordinator: Ian Stehbens**

Expressions of interest were received by Friday April 27. If you are still interested, please contact the RGSQ Office on 07 3368 2066 or admin@rgsq.org.au and provide your name and contact details, phone and email address so that we are able to contact you directly with the final details. **Even if you are unsure, but interested, please register your interest so that we keep you informed.**

Cost: tba. The cost options are nearly finalised, and we will be contacting those who have expressed interest with these in the coming weeks.



Top plunge - Yabba Falls, the first 60m of the 160m fall. Courtesy of Ian Stehbens.

The old geologies of the area provide some baffling questions and a wide variety of landforms including moderate and massive jointing in granitic outcrops, surprising volcanic intrusions and vent, and strongly jointed metamorphic structures. The Mary Catchment has captured some of the upper Burnett catchment via Yabba and Kingham Creeks. The weekend is appropriate for a range of fitness levels:

- easy but rough walk to top of Yabba Falls and Weaner Rock;
- moderate challenge due to length of slopes gives access into Kingham Gorge and also into Gates of Yabba;
- abseiling descent into awesome Baiyambora Gorge with challenging return hiking ascent.

Staying at Imbil in your choice of accommodation: Imbil Country Cabins (economical quality accommodation) or B&Bs or camping at Deer Park,

camping at Imbil Island Reach Campground, or at Borumba Dam camping area.

Borumba Deer Park www.borumbadeerpark.com:

Camping \$15pp pn.

Budget Cabins \$75 for first 2 persons pn, + \$15 per extra adult.

Deluxe Cabins \$95 for first 2 persons pn, + \$15 per extra adult.

Own Van \$32 for first 2 persons pn +\$17 per extra adult.

Alternative quality accommodation (rating by the trip

Coordinator ****) at **Imbil Country Cabins** for up to 6 persons (1

Queen, 2 bunks, 1 double fold out sofa) is \$181 pn.

Access to the field site from Imbil requires a 4WD vehicle, so we will be

carpooling for those who do not have a 4WD.

People need to assemble at Borumba Deer Park, Yabba Creek Road,

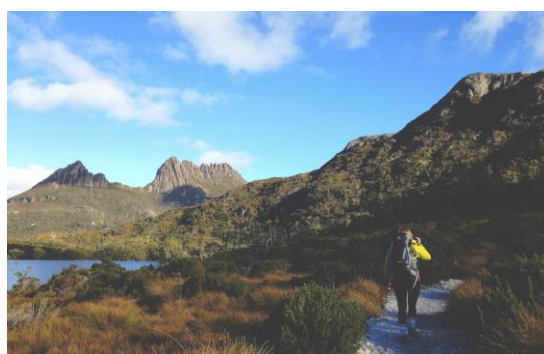
IMBIL by 7.30am on the Saturday morning and again on the Sunday

morning. This trek will involve two days, returning to Imbil on both days.

NOVEMBER: TASMANIA

Expressions of Interest

(by 29 July 2018, unless booked out prior)



We are planning a 14-night, 15-day Fly/Drive Trek to Tassie from 1st November to 15th November 2018 and are seeking expressions of interest from members.

We would fly out of Brisbane into Hobart, collect hire vehicles (sedans) at the airport and meander around Tassie with booked accommodation.

The plan is to use Hobart as an initial base for 6 days to explore Port Arthur and surrounds; Richmond and surrounds; Hobart including Salamander Markets (for those interested), MONA, Wrest Point etc. and Bruny Island. Own cost options for Tours and /or Cruises etc. are not included in our Budget Costs.

We would then travel to Strahan staying two nights. Options would include visiting Queenstown with own cost options for a Gordon River Cruise, Wilderness Railway etc.

From Strahan we would visit Cradle Mountain and Dove Lake on our way to Burnie where we would stay two nights. From Burnie we would visit The Nut in Stanley then on to Smithtown and back to Burnie to visit the Paper Mill and watch the Penguins.

The following day we travel to Ulverstone (Lillico Beach), then Devonport (Mercy Lighthouse), Beaconsfield (Mine and Heritage Centre) and on to Launceston where we stay for three nights. From Launceston we have the options of exploring Cataract Gorge, Pyengama (St Columba Falls), St Helens (Perron Dunes), Binalong Bay (Bay of Fires), Scamander, St Marys (Fingal Valley White Knights), Mathina Falls, Launceston and nearby wineries.

We then travel from Launceston to Hobart visiting Bicheno, south to Rocking Rock and Blowhole, Cape Tourville with an easy boardwalk for cliff-top views, Swansea (Spikey Bridge), Cape Berry Farm, Triabunna Visitor Centre through Orford to Hobart where we stay overnight before departing the next day for home.

A budget cost at this stage is around \$2,500 **per person**, including airfares, vehicle hire and accommodation, based on twin share (or double) and two persons per vehicle.

We are planning on a maximum number of participants of 20 people.

If you would like to register your interest in this trek, please contact the office at 07 3368 2066 or email info@rgsq.org.au to place your name on a list of interested persons.

More detail can be provided once we have an idea of the number interested. **Coordinator: Wayne Mackenzie**

SPECIAL INTEREST GROUPS

KEN SUTTON MEMORIAL LIBRARY GROUP

The group will not meet in June.



UPCOMING GATHERINGS & EVENTS

Map Group Events and Gatherings for the next 3 months are shown below. If you would like to see what Map Group has planned for the remainder of the year contact Ian Francis at brisfran@gmail.com or mob. 0457 628 033 for the events calendar for 2018. Alternatively check the events page on the RGSQ website www.rgsq.org.au.

June 2018

Mon, 04 June
10:00am - 12:00pm

Map Group gathering

Presentation - Mapping Brisbane History by Neville Buch

[Details](#)

Neville has been undertaking the project of mapping Brisbane's history in association with the Brisbane City Council and local historical societies.

[Location](#)

11 Kerriane Place Moorooka 4105

[Transport](#)

Members to make own arrangements

Cost: gold coin donation for morning tea

Co-ordinator: Bob Abnett

(07) 3820-2621 0412-135-794

abnett@powerup.com.au

July 2018

Wed, 04 July
10:00am - 12:00pm

Map Group Event

Visit - MacArthur Museum, followed by lunch at the Victory Hotel

[Details](#)

This is a special tour for the RGSQ, the museum is normally closed on Wednesdays. Our tour will include a selected viewing of some of the museum's WW2 maps as well as a conducted tour of the museum.

[Location](#)

MacArthur House, Corner Queen and Edward Streets
Brisbane, entrance to museum is 201 Edward Street

[Transport](#)

Members to make own arrangements. Brisbane CBD, no onsite car parking.

Cost: \$5.00 + lunch (\$11-\$17)

Co-ordinator: Ian Francis

(07) 3266-2285 0457-628-033

brisfran@gmail.com

August 2018

Mon, 06 August
10:00am - 12:00pm

Map Group gathering

Presentation - Aspects of Imagery Mapping by Sylvia Michael

[Details](#)

Sylvia is the Geospatial Processing & Technical Solutions Manager at Geoimage Pty Ltd. Sylvia is a practicing spatial map maker.

[Location](#)

11 Kerriane Place Moorooka 4105

[Transport](#)

Members to make own arrangements

Cost: gold coin donation for morning tea

Co-ordinator: Bob Abnett

(07) 3820-2621 0412-135-794

abnett@powerup.com.au

Map Group Event Report

Map Group's Queensland Maritime Museum Visit - 16th May 2018.



Photo: RGSQ members at the Maritime museum. Courtesy of Ian Francis.

Visiting museums is a common pastime. Those with an interest, invariably, find a museum somewhere to feed their curiosity. However, to attract visitors, museums must continually refresh their material and displays - this means that parts of the collection are rotated out of display areas and general viewing. Sometimes the real treasures are "out the back".

We are fortunate that the respected name of the Royal Geographical Society of Queensland opens doors for our members. The Map Group has had the privilege of "back of house" visits to many institutions including the Australian National Library, Queensland State Archives and The Australian War Memorial.

The RGSQ Map Group's visit to the Queensland Maritime Museum afforded members both "entry to back of house" and access to experts. As stated, the RGSQ name opens doors and in addition our RGSQ member Peter Nunan opened them further. Peter is an essential volunteer in the Maritime Museum's library as well as the curator of their map library. Peter has authored or co-authored four books, these are: *HMAS Diamantina*, *More than a Haircut and a Shave*, *Master Mariner - The story of Captain Harold Chesterman and Subs Down Under - Brisbane 1942 - 1945*. It was Peter's planning that made the visit the exceptional success it was.

Peter organised and executed a very special visit for Map Group members. The response from the Map Group was brilliant. In one of the Museum's meeting rooms Peter arranged a selection of valuable maps and books. After Map Group members examined these items, Peter ran a discussion session highlighting the rare, unusual and intriguing aspects of the display material. An example was a Japanese map used by the Japanese in WW2. The map covered a region just north of Australia. The interesting part was that the map was a copy of English

and American maps. Japanese maps for this region were destroyed in an earthquake prior to the war. Both the English and Americans gave the Japanese replacement maps. Little did we know they would be used against us!

The Maritime Museum's library is open by appointment to researchers but generally there is no public access. Our visit included a comprehensive tour of the library, maps and plans collection. Such a rare treat!

For a relaxing lunch we adjourned to the Ship Inn Hotel prior to returning to the museum for the afternoon session. Peter expertly guided us through the exhibits, his fascinating stories kept the party spellbound.

This was another special visit; we have had many. If you think you may enjoy what the Map Group offers including our tailored visits, then the RGSQ Map Group may be for you. If you are interested, please contact the Map Group Co-ordinator Bob Abnett on abnett@powerup.com.au or mobile phone 0412-135-794

Our next visit is to the MacArthur Museum on the 4th July where we will see more rare maps and artefacts.

Ian Francis

Report "Tea with Sugar" March 2018



RGSQ members at Madura Tea estates, NSW; courtesy of Kay Rees.

28 people participated in this day activity. It was an early start, 7am due to daylight saving in NSW. Everyone was on time for the bus which made two pick-ups. One at Park Ave, Eagle Junction, the other at Nathan Park and Ride.

On arriving at Madura tea estate, we were guided to a garden and then on a tour of the factory: the estate covers 50 acres with 250,000 tea bushes. The tea plant is *Camelia Sinensis* with two varieties cultivated on the estate: the darker, Chinese, and the lighter, Indian. Michael Grant Cook started the estate back in 1978 and today there are 9 gardens. It is a suitable subtropical location with 1700mm of rainfall, gentle slope and acidic soil. There are solar panels for power supply, three dams, no irrigation or pesticides used. About 55 locals work at the plantation.

Tea production is a four-year process: April – May, the seed pods are collected and from these the seedlings are grown to 30cm then planted into the gardens. They grow for three years before harvest. The leaves are picked by a harvester every 12 -14 days between October - June. The leaves are delivered to the factory by truck and trailer. Each year, 500 bushes are replaced.

There are three kinds of tea: white, green and black. Once the leaves arrive at the factory, they are dried for green tea and oxidized and dried for black tea. In 2002 machines were imported from Italy to produce 446 tea bags per minute. Teas are blended with other varieties from Indonesia, PNG and Sri Lanka for flavour.

Lunch was at Tropical Fruit World where we had an alternate drop meal with their tropical fruit punch. It was a truly delightful location.

After lunch we met with Tim Zwemer, who hosted us around Robert Quirk's sugar cane farm. He showed us 'before' and 'after' photos of the farm to showcase the new farming methods. They have trialled methods of applying fertilizer to the root and leaves to minimize the run off and prevent fish kills. Also, they have

increased the yields per hectare. The Condong mill and farm have been accredited with the Bonsucro label which is the global standard for sustainable sugarcane production. It is awarded on environmental and social criteria.

We were fortunate that the rain held off till we were back in the bus. We left at 3pm as planned and were home on time. All told it was a very interesting, informative and enjoyable day.

By Jeanette Lamont, trip Coordinator.

TAAC Event Report: Visit to Osprey House Environmental Centre

By Jeanette Lamont

Society members had a very enjoyable and informative visit to this centre. We arrived at 11.30am and were met by the volunteers who invited us to have our picnic lunch on the shaded veranda. After lunch, the experienced bird photographer, Pip, took us for a walk through the Marine couch pastures to the saltmarsh flats where we observed many water birds and were thrilled to see two swans nesting.

We then leisurely walked along the board walk through the Grey Mangrove forest (*Avicennia marina*) and also identified the Stilted Mangrove species (*Rhizophora stylosa*). At the end of the walk there was a bird hide where we looked out at the mudflats and saw many local waders and seabirds. However, many of the migratory birds had already left for the Northern Hemisphere. We saw the Raptor Pole with its camera installed above the platform; even though it was not in residence, we were able to view video footage on a monitor located in Osprey House.

Audrey had picked the perfect time for low tide at 1pm and Pip was a wonderful guide. She was so giving of her expert knowledge of the birds. It was such a peaceful location looking out at the intertidal zone of the Dohles Rocks foreshore and the Pine River. We left at 3pm thinking it would be a great place to revisit.

REPORT on the April Fieldtrip to Mooloolah River Landcare Nursery

The nursery manager Sharon and her volunteer staff propagate native seeds from the local area for sale. Sharon's knowledge and experience were demonstrated as we followed a seed from the refrigerator to the seed box, following germination, into tube stock. The plant is "hardened" ready for sale by moving the plant from heavy shade to direct sunlight over an extended period. HANDY HINT: plant a seed to the depth of the seed size for germination.

I encourage members to support their local Land Care Nursery (volunteer organisation); their plants are native to the area and raised in the local environment.

Tanya, the Biodiversity Officer, produces the Jewel and Madeira Vine Beetles for sale to local councils and private landlords as a biological control of the Cats Claw Creeper and Madeira Vine.

Tanya explained the importance of monitoring the progress of the Jewel and Madeira Vine beetles as they control the growth of the Cats Claw Creeper and Madeira Vine but do not destroy them.

The nursery is on the site of the quarry and the available land has been revegetated, the trees and shrubs providing onsite seeds for the nursery.

[Mooloolah River LC Nursery: 2670 Steve Irwin Way, Glenview \(Turn at Quarry Traffic Lights\).](#)

By Wendy Davis – Activity Coordinator



THE STOOPED GENERATION: BRIEF OBSERVATIONS ON AGEING IN JAPAN

By Peter Griggs

Recently, Tracey and I were fortunate to spend some time in Japan. A very noticeable feature of the crowds in the streets and on the trains were those who I identified as 'stooped' – elderly Japanese hunched over walking frames, moving slowly along with the assistance of walking sticks or being pushed in wheelchairs. Several of our guides on day trips announced that they were officially 'retired' but were continuing to work in a part-time capacity. Many taxi drivers appeared to be elderly. Officials wearing blue uniforms and directing traffic were often elderly.

The figures in Table 1 show currently that Japan has just over a quarter of its population aged over 65 years, the highest percentage for all countries. Globally, the country has the highest elderly dependency ratio (i.e. the number of over 65-year old citizens dependent upon 100 employed adults) and the highest median age for any national population (i.e. middle value).

Table 1. Demographic figures for selected countries, 2017 estimates

Country	% of population aged over 65 years	Elderly dependency ratio	Median age	Life expectancy
Japan	27.8	42.7	47.3	83.7
Germany	22.0	32.1	47.1	81.0
Italy	21.5	35.0	45.5	82.7
Australia	16.1	22.6	38.7	82.8

Source: Figures assembled from the CIA, World Factbook.

Japan has reached this situation due to a combination of two factors. The country, like Australia, Canada and the USA, experienced a 'baby boom' after World War II. The total Japanese population rose from 71.9 million (1945) to 111.9 million (1975). This trend has coincided with increased life expectancies. Today, Japan has the world's highest life expectancy, so all those people born after 1945 have an increased chance of surviving into their eighties (or beyond).

The implications for Japan are profound. To support so many elderly, the country must maintain its economic prosperity. This task will provide its leaders a challenge, especially at a time when the Japanese population is predicted to shrink from 125 million (2020) to 107 million (2050) due to the country's very low birth rates. Current Japanese workers may have to come to terms with the idea that they will be required to work until the age of seventy (or beyond), and that they will have to pay higher taxes to support so many elderly persons. Innovative solutions to caring for so many aged, such as the use of robots, may become more common.

Finally, from a global perspective, the world (and Japan) is in uncharted territory. Five hundred years ago, the life expectancy of

some-one living in England was around 38-40 years of age. Currently, the world and individual countries have never had so many aged persons, and the numbers are likely to increase, especially in China where the current number of people aged over 65 is expected to rise from 123 million to 440 million by 2050.

There are no trends or insights from the past to guide global leaders in formulating policies to accommodate the 'stooped' generation. What is probable, however, is that these elderly will not be silent and that their sheer numbers will create new political movements, demanding a greater share of national resources to care for their aged members.

Australian Geography Competition Update Question Pack Mailout

By Bernard Fitzpatrick

A "BIG THANK YOU" to the RGSQ members who helped and registered to help but were not required for the 2018 Question Pack mailout. What a mammoth effort in a tight working space! We used the downstairs Unit 2 at 237 Milton Road to do this mailout. A somewhat more confined venue compared to previous years, yet the team of volunteers were able to sort, pack and ship nearly four tonnes of printed material to 768 schools accounting for over 71,100 students.

On Monday of Anzac Day week all printed materials and other required equipment arrived at RGSQ. Volunteers arrived promptly on Tuesday morning to start the packing process, and again on Thursday and Friday. Milton Post Office at Mary Ryan's Bookshop picked up the packages for free and lodged them in the Australia Post system.

We used Australia Post's tracking numbers this year to allow tracking of parcels over 500g as we did for the 2017 Certificate mailout. While it adds a little more time in the process, it has been a great assistance in allowing the RGSQ Office to address school queries about delivery times.

THANK YOU for doing the arduous work Ian Francis, Roger Grimley, James Hansen, Paul Lambert, Peter Lloyd, Patrick McKewin, Neville McManimm Peter Nunan, Ron Owen, Mike Piccolo, Kay and Graham Rees, Bob Reid, Sue Reid, Pamela Tonkin, and John Wilkinson.

Volunteers Required

Early to mid-June - we would like to call on members to assist with the scanning of the returned answer sheets. At present no specific dates can be given as it depends on when and how many sheets are returned at any time. This job is very repetitive and requires concentration to ensure no mistakes. If you would like to help or enquire about the task, please call Bernard in the Society's Office on 3368 2066.

Tuesday 24 to Friday 27 July – we would like to again call on members to volunteer to help with the sorting, packing and dispatch of the Australian Geography Competition's certificates, results and prizes. If you can assist with this mailout, please contact the Office on 3368 2066.

The School Round and iGeo

The Australian Geography Competition is being run in schools around Australia and three overseas from Thursday 17 May to Thursday 31 May. All the best to all schools and students sitting the Competition.

It is great to see the number of schools and students participating in the Competition on a national basis on the increase again. With RGSQ's move to regular digital communication with schools, we have seen numbers continue to rise even since the Question Pack mailout in late April. As at 17 May there were 782 schools accounting for over 72,200 students entered.

The Australian Team to the 2018 International Geography Olympiad (2018 iGeo) will be competing at Universite Laval in Quebec City, Canada from Wednesday 1 August to Sunday 5 August with the closing ceremony and medal presentation on Monday 6 August. As reported in the RGSQ's March Bulletin, representing Australia are: *Sophie Ohlin, NSW, from Sydney Girls High, Harry Hall, SA, from Trinity College (Gawler), Hannah Wright, SA, from Walford Anglican School for Girls and Phoebe Blaxill, WA, from St Mary's Anglican Girls' School, Karrinyup.*

The Australian Team Leaders are Kath Berg (Australian Geography Competition Committee and RGSQ member) and Liam Sloan (Geography Teachers' Association of South Australia, 2017 and 2018 Geography's Big Week Out Coordinator, and Geography Teacher at Endeavour College, Adelaide). More news on the 2018 iGeo closer to their departure in July.

RGSQ Bulletin

June 2018

June lecture/meeting:

Tuesday June 5: *New RGSQ website information evening*

Tuesday June 19: *"Balloons, Blackbirds and Beyond: a short history of photo intelligence" by Ken Granger; public lecture on the Sunshine Coast*

Map Group: Monday 4 June, 10:00am to 12:00pm: *Presentation – 'Mapping Brisbane History' by Neville Buch*

Ken Sutton Memorial Library Group: *the group will not meet in June*

The June Council meeting will be held on the third Tuesday of the month

The Royal Geographical Society of Queensland Inc
"Gregory House", 237 Milton Road, Milton Q 4064

POSTAGE
PAID
AUSTRALIA