



RGSQ Bulletin

ISSN 1832-8830

November 2019

Vol 54 no 10

Published by The Royal Geographical Society of Queensland Inc., a not-for-profit organisation established in 1885 that promotes the study of geography and encourages a greater understanding and enjoyment of the world around us.

Patron: [H.E. Paul de Jersey AC, Governor of Queensland](#)

President: Dr Iraphne Childs

From the President

What's happening on the RGSQ Council?

The first regular meeting after the AGM of our new Council was held on Tuesday 15th October. The agenda, as always after an AGM, was a full one with many reports and matters to discuss. Here are some examples which may be of interest to members.

The Society's Committees for the year going forward was confirmed at Council as follows:

- **Collections:** P Griggs (Chair) J Graham, P Lloyd, P Nunan
- **Finance:** C Spriggs (Chair), J Nowill, I Childs, I Harding, L Darii
- **Honours:** D Wadley (Chair), J Holmes, L Isdale, L Scanlan, D Cook
- **Ken Sutton Selection panel:** I Childs (Chair), M McIvor, A Powell (MLA)
- **Property:** P Tonkin (Chair), N O'Connor, D Stephens
- **Publications:** I Childs (Chair), A Lau, J Corcoran, I Harding, P Griggs
- **Scientific Studies:** I Childs (Chair), P Moss, P Nunn, N O'Connor, K Scott, T Sigler
- **Traveller:** L Scanlan (Chair), L Darii, S Scanlan, I Childs (ex officio)
- **Treks and Activities Committee:** C Spriggs and W Mackenzie (Co-chairs), M Comer, J Lamont, B Reid

A new informal advisory group, which will meet only on an *ad-hoc* basis, is forming up to discuss overall technology developments for RGSQ. e.g. upgrading our boardroom facilities. Members who have expressed an interest in this area are Graham Rees, John Fairbairn, Sarah Barry and Councillor John Tasker.

While most of the above committees currently have a full complement of members, we would welcome members who have an interest in and who could contribute to the Collections, RGSQ Traveller and TAAC committees. If this is you, please contact the office (info@rgsq.org.au or 07 3368 2066) who will put you in contact with committee chairs.

At the Council meeting, reports were tabled from committee chairs for noting and discussion. This included some bright ideas for additions to the Bulletin from the newly formed Publications committee, updates from the Scientific Studies and RGSQ Traveller committees and

recommendations from the Honours committee for 2020 Thomson medal, Fellowship awards and ideas for 2020 lecture programme – thank you to the members who contributed suggestions for lectures.

Property committee has been particularly active in progressing important issues associated with our facilities. For example, carpentry and electrical alterations in our kitchen, checking and re-supplying our first aid kit and finalising the Society's workplace health and safety manual. In addition, we have been liaising with the building's body corporate regarding fire safety matters.

Special Interest Map Group is planning activities for the coming year and Archives, Library and Map collection groups are continuing their work. Young Geographers have been active in visiting and presenting to schools and are planning an eventful year ahead with more educational, adventurous and social activities on their agenda.

Members are always welcome to join and participate in any of these SIGs if they capture your interest.

The draft program for our monthly lectures in 2020 was reviewed by Council and we will be contacting prospective speakers to pin them down for dates and lecture titles. Among the exciting possible topics are remote sensing of reef systems, research on the lands of the ancient Maya in South America, impacts of feral animals in Australia and, closer to home, the BCC's plans for developing Victoria Park in central Brisbane.

So, there is much going on behind the scenes at RGSQ. It's clear that the new Council has energy and enthusiasm for leading a productive year ahead that will benefit the Society.

I look forward to seeing you at our Christmas party on December 3rd when there will be a couple of special awards and again a quiz to test your geographical knowledge!

Iraphne Childs, President

NEW MEMBERS

We have much pleasure in welcoming Mr. Allen Vaughn, Mr. Christopher Allen, Mount Alvernia College, Miss. Courtney Cook, Miss. Caitlin Williams and Mr. Mal Thomson as new members. We hope your association with your new Society is long and mutually enjoyable.

NOVEMBER 2019 MONTHLY LECTURE

'Geography Education in Queensland'

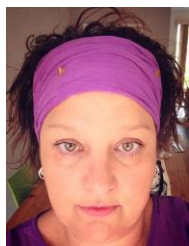
presentation by Julie Davis, President of
Geography Teachers' Association QLD

Date: Tuesday, November 5

Time: 7.30pm-9pm

Venue: [Gregory Place, Level 1, 28 Fortescue St, Spring Hill](#)

Register: www.rgsq.org.au



Julie is a passionate and experienced geography teacher who has taught at the junior and senior secondary and tertiary levels. She is currently the President of the Geography Teachers' Association of Queensland (GTAQ) and has led the organisation through a period of strategic renewal. Julie is a

sessional lecturer in Geography and Education at QUT and a Principal Education Officer (PEO) at the Queensland Curriculum and Assessment Authority. Julie is the lead syllabus writer for the Senior Geography and the Aboriginal and Torres Strait Islander Studies Syllabuses. In her role as PEO she leads the work developing materials to support Queensland teachers on their 2019 journey implementing the new syllabuses.

SYNOPSIS

The role of GTAQ is to support geography teachers across Queensland and to promote excellence in geographical education. Through the recent strategic review, the vision for GTAQ was reimaged to reflect our core agenda in a clear and concise statement - Excellence in Geographical Education - and articulate our values - EMPOWERMENT, INTEGRITY, SUSTAINABILITY, EXPERTISE.

In line with these values, in 2019, GTAQ have embarked on a series of professional development activities to support Queensland teachers, particularly in their implementation of the new Senior Geography syllabus. 2019 has seen the implementation of new curriculum for 47 senior subjects in Queensland to accommodate a new Queensland Certificate of Education qualification. The most significant change is a move to external examinations for all subjects. The introduction of a new syllabus and new qualification system has, understandably, brought with it some teacher nervousness and GTAQ has been actively ensuring we help guide teachers in developing their understating of the requirements of the new syllabus, with its renewed focus on geographical process and relationships as well as embedding the use of spatial technologies.

CONTRIBUTORS

Iraphne Childs, Julie Davis, Ian Francis, Peter Griggs Emma Kennedy, Peter Lloyd, Wayne Mackenzie, Bob Reid

PHOTOGRAPHY

Iraphne Childs, Julie Davis, Emma Kennedy, Leo Scanlan,

Focus on Geographical Research SCIENTIFIC STUDIES - UPDATE

The Scientific Studies Committee met on 25th October to discuss plans for a pilot study utilising funds approved by RGSQ Council. The meeting confirmed that the next RGSQ scientific study should be relatively low-cost, conducted in an easily accessible location with potential for "citizen science" and RGSQ member-volunteer participation. UQ-based committee members already have strong research links with the Quandamooka people who have native title rights on North Stradbroke Island and the UQ's Moreton Bay Research Station in Dunwich has accommodation which may be available for our study participants. So, the decision was made to focus efforts on North Stradbroke Island. The next step will be to contact QYAC (Quandamooka Yoolooburrabee Aboriginal Corporation) to introduce the RGSQ/UQ project. It is hoped that we can arrange a ½ day meeting in Dunwich between QYAC and members of the RGSQ scientific studies committee to canvass research ideas and possible collaboration with QYAC. One possible theme discussed for the project was **post-bushfire physical landscape changes, regeneration and recovery**.

By Iraphne Childs

Geographers in the Spotlight

Dr. Emma Kennedy



Dr. Kennedy from UQ's Remote Sensing Research Centre within the School of Earth and Environmental Sciences has been nominated for the international *UCLA Pritzker Environmental Genius Award*, recognising and supporting young champions for the environment.

Through mapping and monitoring coral reefs around the world, Dr Kennedy's research aims to improve global understanding of coral ecosystems, so that they can be better protected. Mapping all the world's reefs in unprecedented detail, Emma and her research team is making a freely-available *Atlas of Coral Reefs* that will underpin future science and management. In addition to the mapping work, as part of UQ's 50 Reefs Global Coral Reef Conservation Initiative, Dr Kennedy's research is driving improved reef protection policies, identifying and prioritising protection efforts on coral reefs that are least vulnerable to climate change, as well as efforts that have the greatest capacity to repopulate reefs over time. The award winner will be announced in Los Angeles on 14 November and will receive financial support of \$100,000 to take their idea to the next level. Should Emma win, she plans to use the funds to advocate for greater reef protection. Good luck, Emma!

Photo: courtesy of Emma Kennedy

UPCOMING EVENTS | find out more and register at www.rgsq.org.au



Unfortunately, the Binna Burra Trip had to be cancelled because of the disastrous bush fires. This trip will be rescheduled, probably in March 2020. At the time of writing only 4 spaces left for the Gympie weekend, and 3 spaces for the Lambert 2020 trek. So, please book as soon as possible for these trips. We can accept further bookings for the St Helena Island trip on Saturday 23rd November. The program for next year is nearly complete and will be published before the end of the year. TAAC also has organised the Christmas Party and hope to see as many as possible there on December 3rd.

To register and book for any of the upcoming treks and activities, please visit the RGSQ website www.rgsq.org.au or contact the Office on 07 3368 2066.

GYMPIE DISCOVERY WEEKEND

Friday, 1st November - Sunday, 3rd November

Join us for an interesting weekend at Gympie and Surrounds, including visits to the Woodworks and Gold Mining Museums, a ride on the Mary Valley Rattler and a visit to a Camel Dairy.

MEMBERS ONLY EVENT 4 spaces left

Registration: \$70.00 per person; at <https://rgsq.org.au/whatson>

Inclusions: entry and guide for Woodworks Museum; Mary Valley Rattler steam train (BYO snacks and drinks); entry and guide for Goldmining Museum booking fee.

Exclusions: accommodation costs; meals; transport.

You should book your accommodation as soon as possible if interested.

Accommodation: various Motels and accommodation options. Gympie Caravan Park will be the "Trip Centre"

<https://www.gympiecaravanparkgympie.com/>.

For a copy of the Programme, please visit the RGSQ website www.rgsq.org.au.

Trip Organiser: Wayne McKenzie

ST HELENA ISLAND NATIONAL PARK

23 November

The trip proved **very popular and in demand; 5 more space were added**. If interested register now at <https://rgsq.org.au/whatson>

Where: St Helena Island National Park – Moreton Bay

When: 10am Saturday 23rd November (be at William Gunn Jetty, Manly, by 9:45am)

Registration: Members \$85; Non-members \$90 (includes ferry, lunch, and guided walking tour); <https://rgsq.org.au/whatson>

Transport: Own transport to Manly

Duration: Five hours or a little more

Parking: Google Maps shows an appreciable amount of car parking within 5 to 8 minutes' walk. Trip Advisor indicates street parking is available within 5 to 8 minutes' walk as well.

Details: St Helena Island lies about 5 km east of the mouth of the Brisbane River and has an area of about 80 hectares excluding mangroves.

Evidence from middens shows that the island, known as Noogoon, was used by Aboriginal people for hunting dugong and flying foxes and gathering shellfish.

By the end of the twentieth century, there were over 300 prisoners on the island, many of whom had been convicted of

violent crimes. Prisoners were engaged in farming, with sugar, maize, Lucerne and vegetables being produced; as well as 'trade' activities such as brickmaking, tailoring, and rope making. Our guided tour with Cat O'Nine Tails Cruises will include buildings in the restricted zone and involve walking a little over 4 km. Lunch will be provided during the tour. Bring a bottle of water, sunscreen and a hat, and wear comfortable shoes.

Coordinator: Bob Reid



RGSQ Christmas Celebration

Tuesday, December 3

Time: 7:30pm-9:00pm

Venue: Gregory Place, Level 1, 28 Fortescue St Spring Hill QLD 4000

Cost: \$5 per person - members, \$7 per person non-members

<https://rgsq.org.au/whatson> or contact the Office on 07 3368 2066

The President warmly invites RGSQ members and guests to enjoy a final get together for 2019. Come along and reminisce over your geographical adventures and catch up with your friends.

The registration cost will cover drinks, tea, coffee and Christmas cake. It would be much appreciated if members are able to bring a plate to share.

We look forward to greeting you all on the night.

2020 RGSQ Trek to Lambert Centre

3 spaces left



This exciting 12-day trip includes airfares from Brisbane to Alice Springs, a luxury 4WD Tour Coach with a driver/guide and camp cook. Many included attractions as detailed in the Program on the website, as well as all breakfasts and dinners and most lunches. Some camping and some motels/cabins.

Maximum limit: 20 people.

Initial deposit \$350. Due by 9 March 2020: \$500 and final by 9 July 2020. Deposits are non-refundable (subject to conditions). Please book online at www.rgsq.org.au.

Full Draft Itinerary, Accommodation and Coach Details are available on the website www.rgsq.org.au.

SPECIAL INTEREST GROUPS

KEN SUTTON MEMORIAL LIBRARY GROUP

The group will meet on Monday, 25 November, from 9.30am to 12 noon.

Venue: 'Gregory Place', Level 1, 28 Fortescue St, Spring Hill, 4000



EVENTS CALENDAR

New and existing members welcome

For a full view of the Map Group year refer to the RGSQ website

www.rgsq.org.au

NOVEMBER

Wed, 06 November 2019, 10:00am - 12:00pm

Dr Ray Kerkhove conducting a tour of Aboriginal Camp Sites of Kedron Brook, Nundah - followed by lunch

The event is now fully subscribed.

Website link: <https://www.rgsq.org.au/event-3216777>

DECEMBER

Mon, 02 December 2019, 10:00am - 12:00pm

Map Group End of Year "Show and Tell", morning tea and social

Details: A fitting finale to an exciting year! Members are encouraged to bring along an item of geographical significance and share the interesting points of that item with the group. Group members to bring a plate to share at the end of year celebration.

Website link: <https://www.rgsq.org.au/event-3216332>

Location: RGSQ, 28 Fortescue Street Spring Hill Brisbane

Transport: Members to make own arrangements

Cost: \$2.00 towards the cost of tea and coffee

Coordinator: Ian Francis (07) 3266-2285, 0457-628-033; email brisfran@gmail.com

The Tryon Diary

Words by Peter Lloyd and Peter Griggs

Henry Tryon (b. England 1856) worked as curator at the Queensland Museum from 1883 and then joined the Queensland Department of Agriculture in 1894 where he was appointed the state's first Government Entomologist and Plant Pathologist. Tryon was the founding Secretary of the Royal Society of Queensland and a member of RGSQ.

Tryon made several major scientific contributions to agriculture in Queensland. He was the first scientist to report upon the diseases of economic crops in Queensland (1889), warning farmers and politicians against the uncontrolled importation of plant material into Queensland. During the early 1890s, he drafted the regulations which became the *Diseases in Plants Act of 1896*. This legislation effectively led to the first plant-quarantine service in Queensland.

Tryon's greatest contribution, however, involved his association with the Queensland sugar industry which suffered from reduced yields in the 1890s due to gumming disease, a very nasty bacterial infection (not discovered until 1926-1927) that destroyed the centre of stalks of cane, thereby reducing sugar content. During 1893 and 1896, Tryon was a member of

expeditions to different parts of British New Guinea. Here he was associated with collecting nearly 100 wild varieties of sugar cane then unknown to European science, but his vigilance ensured that no diseased sugar cane material or foreign insects were imported into Queensland. Subsequently, two of these cane varieties – Badila and Goru – were found to be very sucrose-rich and displayed considerable natural resistance to gumming disease. Both varieties were widely grown in Queensland after 1906.



Handover - Iraphne Childs with Shannon Robinson, Coordinator, Collections & Research Resource Centre (Library), Qld Museum.

Tryon also identified methods to combat insect pests troubling the Queensland sugar industry, especially the cane grub (or larvae of the numerous cane beetles in Queensland). In an era before insecticides, Tryon advised Queensland's canegrowers to collect cane grubs and cane beetles by hand – children earned pocket money doing this task – destroy the beetles' feeding trees, and fumigate the soil with carbon bisulphide which killed the cane grubs (all methods used by the state's canegrowers between 1900 and 1940). In the mid-1900s, Tryon also identified that *Metarhizium anisopliae*, a fungal pathogen, was fatal to cane grubs, but, unexplainedly, he did not pursue this finding. In 1991, his research was re-examined by CSIRO scientists trying to find a new way to kill cane grubs, following the Commonwealth government's ban on the insecticide BHC which was widely used by Queensland's canegrowers.



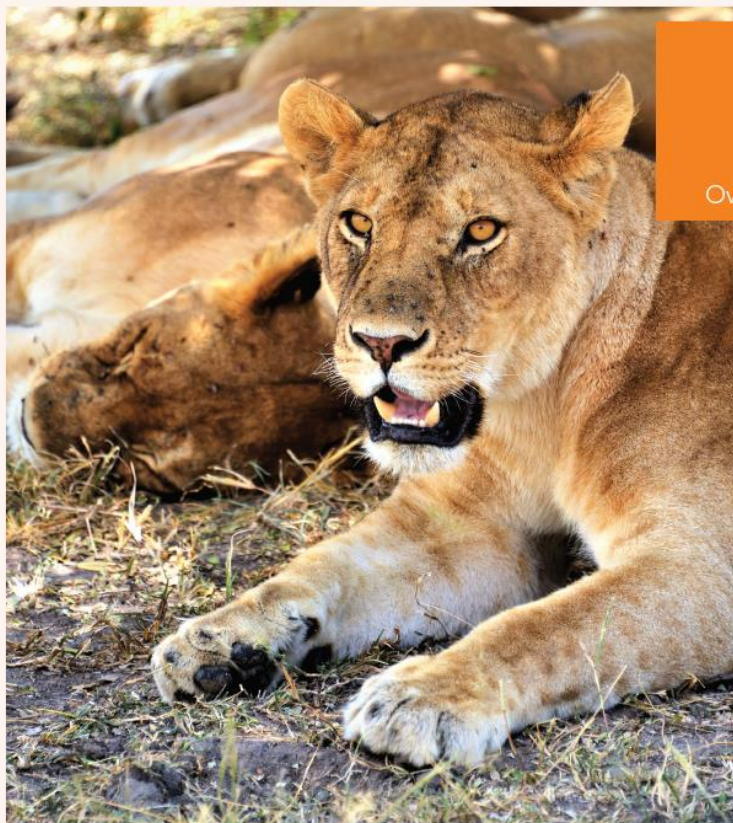
The Tryon collection held in the Museum library with RGSQ's 1874 diary, 2nd from the left.

In 2017 one of his diaries (1874) was found in the storeroom at the Milton premises. How it got there is unknown. A search revealed that the Museum had another of his diaries (1868) amongst its Tryon Collection. Steps were then taken to transfer the diary to the Museum but delayed during RGSQ's move to Spring Hill. The transfer was accomplished on the 4 October with the diary joining the Tryon Collection at the Museum (see the photos).

The work continues

The Tryon Diary story is just a small part of an on-going audit and assessment of the Society's numerous artefacts and memorabilia begun by Bernard Fitzpatrick in 2015. This work included the 2017 Assessment of Significance report by Judith McKay and Bill Kitson and a detailed listing and photographing of artefacts by UQ student volunteers before the move to Fortescue Street.

The assessment and placement are now continuing and if anyone is interested in helping with this task please contact the office. *Photos: I. Childs.*



VICTORIA FALLS TO THE ATLANTIC COAST

Overland through Zimbabwe, Botswana and Namibia

SOUTHERN AFRICA SAFARI

13 June - 6 July 2020

HIGHLIGHTS

Victoria Falls, Okavango Delta, Etosha, Chobe National Park, Fish River Canyon and the red sand hills of Sossusvlei, incredible range of animals and the Historic Victoria Falls Hotel



INCLUSIONS

Airfares**, transport, all meals, accommodation, entrance to National Parks as per itinerary, bottled water on tour, fully escorted from Brisbane

PRICE

\$13,950* per person twin share; \$1,225* single supplement. Deposit: \$500* per person non-refundable deposit to secure your booking

*Terms and conditions apply. Itinerary, accommodation, flights subject to change and availability. Tour departure subject to minimum numbers. **Flights ex Brisbane. Flight alterations subject to surcharges. For further information, please contact RGSQ Traveller. Prices correct as at the date of publication.



BELLA ITALIA TOUR

UMBRIA, MARCHE, PUGLIA & CAMPANIA

7 - 21 September 2020

HIGHLIGHTS

Magnificent landscapes, historical cities and villages, art, architecture, food and wine, and, of course, the wealth of culture for which Italy is so famous



INCLUSIONS

Accommodation, transport, meals as per itinerary, entrance to site tours as per itinerary

PRICE

\$11,300* per person twin share; \$2,370* single supplement. Deposit: \$500* per person non-refundable deposit to secure your booking

*Terms and conditions apply. Itinerary and accommodation subject to change and availability. Tour departure subject to minimum numbers and availability. For further information, please contact RGSQ Traveller. Flights to/from Europe are the traveller's responsibility. Prices correct as at the date of publication.



t: 07 3368 2066 | e: info@rgsq.org.au | www.rgsq.org.au

RGSQ Traveller is a project of The Royal Geographical Society of Queensland est 1885
Proceeds will help fund the scientific and geographic projects of The Royal Geographical Society of Queensland

RGSQ Bulletin

November 2019

Monthly Lecture: Tuesday 5 November
'Geography Education in Queensland'
by Julie Davis, President of GTAQ

Activity:

1 - 3 November: Gympie Discovery Weekend
23 November: St Helena Island National Park Trip

Map Group

Wednesday 6 November, 10:00 am - 12:00 noon
Dr Ray Kerkhove will conduct a tour of Aboriginal
Camp Sites of Kedron Brook, Nundah

Ken Sutton Memorial Library

Monday 25 November, 9:30am – 12 noon
'Gregory Place', 28 Fortescue St, Spring Hill Qld 4000

The November Council will meet on the second
Tuesday of the month.

www.rgsq.org.au | info@rgsq.org.au

The Royal Geographical Society of Queensland Inc
PO Box 625, Spring Hill QLD 4004

POSTAGE
PAID
AUSTRALIA