



RGSQ Bulletin

ISSN 1832-8830

December 2020

Vol 55 no 11

Published by The Royal Geographical Society of Queensland Ltd., a not-for-profit organisation established in 1885 that promotes the study of geography and encourages a greater understanding and enjoyment of the world around us.

Patron: H.E. Paul de Jersey AC, Governor of Queensland

President: Dr Iraphne Childs

From the President

Dear Members, and so we come to the end of 2020 – a difficult year for the Society and for many in our community. I hope you and your families have come through the challenges of the year in good health. We are, indeed, fortunate in Queensland to have so far avoided the ravages of the COVID-19 epidemic so distressing to see in other parts of Australia and in other countries. We all hope that 2021 will be an easier year. If restrictions continue easing, as they are at present, RGSQ plans to resume gatherings at Gregory Place in the New Year.

On a brighter note.....

The RGSQ Christmas Party: this year, rather than our usual in-house Christmas party for members, we will have a Christmas picnic lunch on December 5th at Grey Gum picnic area on the eastern side of the main ridge of Mt Coot-tha, between Channel 9 and Channel 7 studios. Thanks to our TAAC committee volunteers for organising a sausage sizzle, bread, and Christmas cake. Please also BYO extra food, desserts, drinks & fold-up chairs. Please see more details in this Bulletin. I look forward to seeing many of you there.

Christmas Quiz?

Since we cannot have our customary slide show and Christmas Quiz at Gregory Place, here are a few Christmas teasers for you to ponder over (check answers at the end of the Bulletin)

Q1: In which modern-day country was St. Nicholas born?

Q2: What Christmas tradition began in Melbourne in 1938?

Q3: From which country did eggnog come?

Q4: Which country started the tradition of putting up a Christmas tree?

Q5: In Australia's version of the song 'Jingle Bells', what mode of transportation is used instead of a 'one-horse open sleigh'?

Q6: Christmas Island in Australia has an annual migration of which animal?

On behalf of Council and staff I extend my best wishes to all members for a happy and safe Christmas-New Year season. I hope that 2021 will be a much better year for all of us and I look forward to seeing you in the New Year at Gregory Place.

With best wishes

Dr. Iraphne Childs, President

RGSQ 2020 CHRISTMAS PICNIC LUNCH SATURDAY 5 DECEMBER, 11am-2pm at Grey Gum picnic area Mt. Coot-tha

**Sausage sizzle, bread and Christmas cake provided
BYO extra food, drinks & fold-up chairs**



An event organised by Treks and Activities Committee (TAAC) and the RGSQ Council.

Registration essential; limited to 50 people.

Register at www.rgsq.org.au, please note, because the event is for members only, you will have to log in to 'see' and register for the event.

A beautiful picnic spot on the eastern side of the main ridge of Mt Coot-tha, between Channel 9 and Channel 7 studios, with BBQ, covered tables and bench seats, toilet facilities, wheel-chair friendly and carpark via Sir Samuel Griffith Drive.



<https://www.mustdobrisbane.com/outdoors-parks-parks-z/grey-gum-picnic-area-mt-coot-tha>

What's happening on Council?

On 17 November, the newly elected Council for 2020-2021 met at Gregory Place. We welcomed new Councillor, Steve Turton, who joined the meeting via Teams from his home in Mapleton. Reports were received from Iraphne Childs (President & Publications), Annie Lau (Treasurer), Pamela Tonkin (Property), Patrick Moss (Scientific Studies), Young Geographers (John Tasker), Lilia Darii (Business Manager) and Rachel Honey, Kath Berg & John Tasker (AGC). Matters discussed included:

- Government assistance has continued to boost the Society's finances. From November onwards we will only receive \$1200/fortnight for Lilia under Job Keeper
- A grant of \$4500 has been received under the 2nd stage of the National Library of Australia's Community Heritage Grant program to assess the preservation needs of the RGSQ Collections
- Lecture program for 2021 confirmed, planning to resume presentations at RGSQ
- RGSQ calendars are selling well but we still need to sell more to cover costs
- Possible options for developing future domestic trips with TAAC and travel agencies
- First aid training has been arranged for 4 RGSQ members and 2 staff in November using funds left over from the Community Benefit Fund grant received for the defibrillator grant
- Loan of the Charles Chauvel portrait to the Alan Baker Art Gallery NSW for an exhibition in 2021. The Gallery has done a valuation of the portrait for RGSQ
- Collaboration with Brisbane Grammar School re. a Youth Club and Certificates for high-achieving Geography students
- Planning for the 2021 AGC is underway.

WELCOME NEW MEMBERS

We have much pleasure in welcoming Catherine Kim, Michael Papageorgiou, Richard Melville, and Harristown State High School as new members of The Royal Geographical Society of Queensland. We hope your association with your new Society is long and mutually enjoyable.

Looking for a new home for 20 years of the Journal of the Institute of Australian Geographers

Any member interested in obtaining the last 20 years of the Journal of the Institute of Australian Geographers, i.e. Australian Geographical Studies to 2005 and Geographical Research since then, please contact Peter Lloyd, via the office at info@rgsq.org.au or 07 3368 2066, on a "first come, first served" basis, to arrange transfer. The journal is heavy so any postage required would need to be paid by the recipient. Acceptance of all journals by one recipient is preferred.

CONTRIBUTORS

Iraphne Childs, Mary Comer, Rachel Honey, Peter Lloyd, Len Lowry, Geoff Paterson, Kay Rees



The **RGSQ Collection Committee** is **seeking member volunteers** to work in the Society's document archives, and the image and artefacts collections.

Although not essential, experience in library and/or archive work would be an advantage. The Society is currently looking to update its collection systems, including the library and map collections, to interface with web-based delivery to its members and the public so some knowledge and skills in basic IT would also help. If you are interested, please contact Lilia at the office at info@rgsq.org.au or 07 33682066.

Australian Geography Competition Volunteers Needed AGC Mailout – Information Brochures

When and where: "Gregory Place" RGSQ Level 1, 28 Fortescue Street, Spring Hill Qld 4000.

Dates: Tuesday 19 to Thursday 21 January 2021

Time: 9:30am to 4:30pm each day. A few hours on any of these days would be greatly appreciated. Six to seven volunteers each day.

For further information and to advise when you are available, please email Rachel Honey at AGCcoordinator@rgsq.org.au or call 07 3330 6907.

This mailout involves placing numerous documents into large envelopes. Attention is required to ensure the correct information is sent to the correct school.

Meet AGC's new Coordinator: Rachel Honey

Rachel joined RGSQ in mid-October as the AGC Coordinator. Prior to this, she worked for Virgin Australia for 10 years, most recently in contract management and project management roles. Rachel has a passion for planning and organising, both of which will be fulfilled in her new role. Outside of work, Rachel is busy with her two young children, and spends her spare time with family and friends, baking, or planning her next travel adventure.

Photo: Rachel in front of Boeing 777-ER Engine



La Niña looks set to bring us a wet summer

by Iraphne Childs

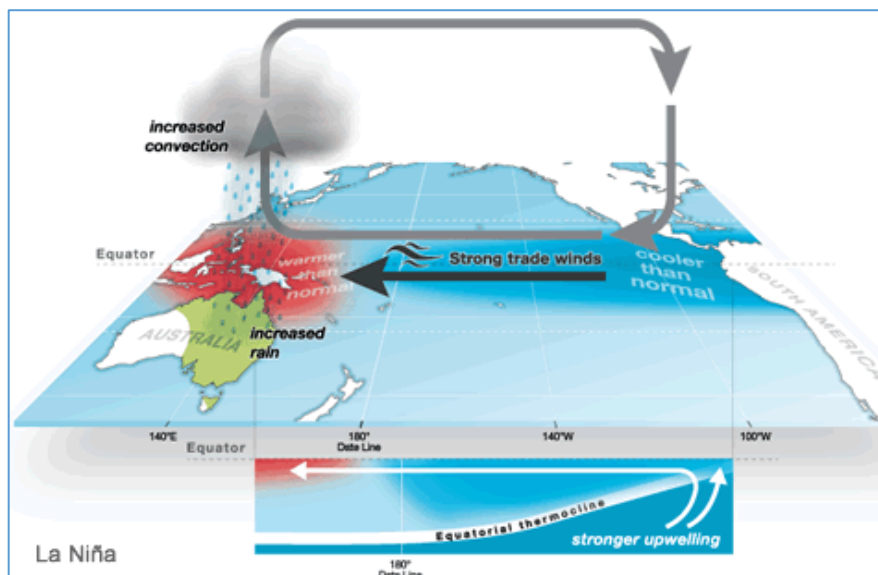
This summer we may be spared a repeat of last summer's horrendous bushfires, but according to the Bureau of Meteorology (BOM) it looks like there is a high probability of more cyclones and flooding due to a La Niña episode.

The **El Niño-Southern Oscillation (ENSO)** cycle is the major influence on annual climate variability for most of Australia. El Niño in Spanish means *The Little Boy* and La Niña means *The Little Girl*. El Niño was first recognised by fishermen off the coast of South America in the 1800s with the appearance of unusually warm water in the eastern Pacific Ocean around December. Fishing in this region is best during La Niña years when cold upwelling ocean water brings rich nutrients off the coast. ENSO has been studied and monitored extensively by climate scientists throughout the 20th century and continues to be closely monitored today in research centres in Australia and around the world.

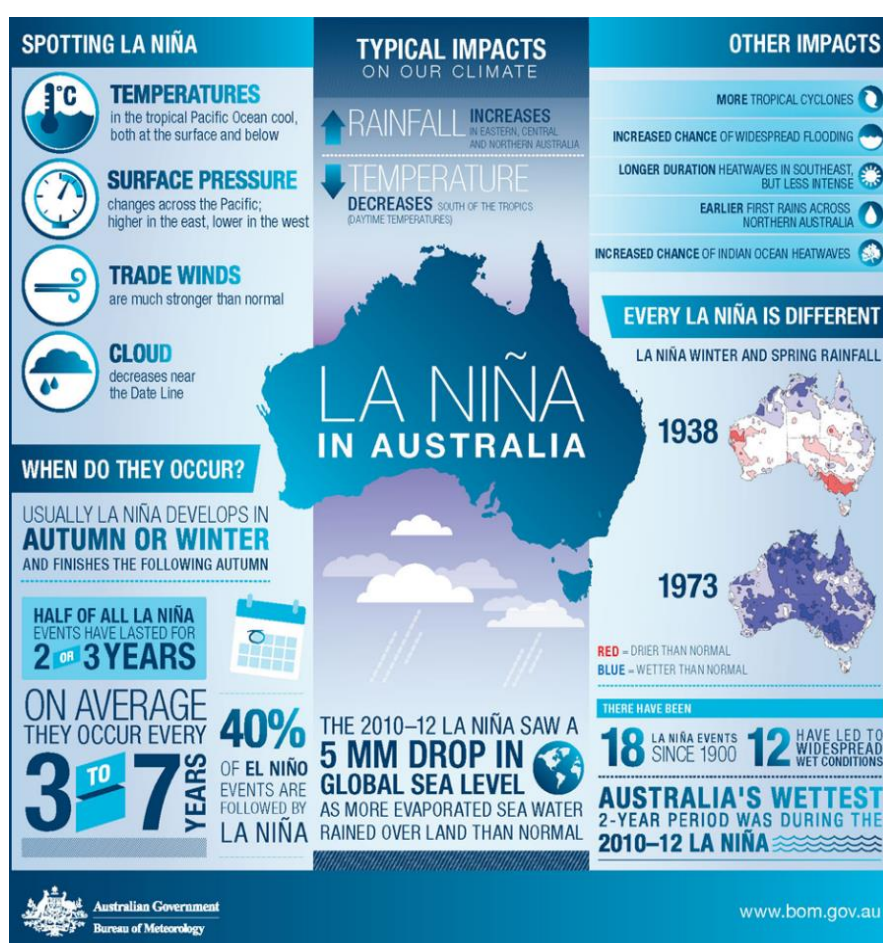
As the BOM explains, the transition between **La Niña**, **El Niño** and neutral conditions (neither El Niño nor La Niña) is governed by interactions between the atmosphere and ocean circulation. La Niña occurs when equatorial trade winds become stronger, changing ocean surface currents and drawing cooler deep water to the surface. This results in a cooling of the central and eastern tropical Pacific Ocean where air descending over the cooler waters results in that region being less favourable for cloud and rain. Conversely, in the western Pacific Ocean and to the north of Australia stronger trade winds help to increase warm surface waters resulting in more favourable conditions for rising air, cloud development and rainfall. A La Niña year typically brings increased rainfall across much of Australia, cooler daytime and warmer overnight temperatures, more tropical cyclones and earlier monsoon onset. The air rising in the west and descending in the east enhances the **Walker atmospheric circulation** which can result in changes to the climate experienced across the globe.

Cyclones can affect Queensland in the summer months during all phases of the ENSO cycle - for example cyclones Oswald in 2013 (a neutral ENSO year), Marcia in 2015 (an El Niño year) and Debbie in 2017 (a weak La Niña year).

The 2010–2011 La Niña was one of the strongest on record (BOM 2020). In February 2011 much of Queensland experienced the effects of cyclone Yasi, one



The Walker circulation in a La Niña year; (BOM 2020)



BOM (2016)

of the biggest storms in Queensland's history. This storm passed between Cairns and Townsville, eventually crossing the coast at Mission Beach. I volunteered with Red Cross and was deployed over several weeks in February and March 2011 to evacuation and recovery centres in Mission Beach, Tully, and Ingham.

In both natural and human environments biodiversity, economic, social and infrastructure recovery following the devastating damage from cyclones and flood can take years. Communities, however, display amazing resilience.

Here is are some example that I witnessed in 2011.



Main street, Ingham, March 2011



Rainforest near Mission Beach, February 2011

Ingham banana farmers, having received timely warnings from BOM prior to Yasi's onslaught, pre-empted total damage to their crops by braking off tall banana plants down to the base so that the winds would not rip them out of the ground, allowing the short young suckers to grow again after the storm. In and around Mission Beach and Tully, cassowaries displaced from the damaged rainforest were wandering along roads searching for food in bare sugarcane fields. Local wildlife organisations and townsfolk saved many birds from starvation by placing fruit and food packages at vantage points around town for the cassowaries. If predictions of the La Niña weather this summer prove to be correct, no doubt there will be more stories to be told of local preparation, adaptation, and resilience. *Photography courtesy of Iraphne Childs.*

References

ABC News (2020) *BOM declares a La Niña, signalling wet spring and summer likely for northern, eastern Australia*
<https://www.abc.net.au/news/2020-09-29>
Bureau of Meteorology (2016) *What is La Niña and how does it impact Australia?*
<http://www.bom.gov.au/climate/updates/articles/a020.shtml>
Bureau of Meteorology (2020) *La Niña WATCH: what it means for 2020* 17 July 2020
<http://media.bom.gov.au/social/blog/2395/la-nia-watch-what-it-means-for-2020/>
NOAA (2020) *What are El Niño and La Niña?*
<https://oceanservice.noaa.gov/facts/ninonina.html>
BOM (2020) *Record high Southern Oscillation Index (SOI) values* <http://www.bom.gov.au/climate/enso/history/in-2010-12/SOI-records.shtml>

Treks and Activities Report: Binna Burra Walk

Contributed by Mary Comer

This was a lovely 12 km walk in the Binna Burra section of Lamington National Park. A short distance before the end of the road, where we started the walk, we saw the tremendous amount of work that has been done to open up the road after the fires. The high bank has been cut back with many trees and rocks tumbling away.



Morning tea with the big Tallowwood tree; photo Ron Owen

Work continues high above the road with safety fences being erected to prevent further damage of rock and tree falls onto the road. Persons were seen working using abseil gear suspended high on the steep bank.

There were 10 members and 2 guests along with the guest geologist, Andrew Willson. The new surface on the first 1.9 km section was a joy to walk on and the rest of the track in very good condition thanks to the effort of the Rangers. We stopped at the junction with the Coomera track and thought of the Countess of Athlone who the original seat was erected for so many years ago. It was in this area that we saw Antarctic Beech trees, a remnant of Gondwana. I believe that this area is the furthest north point in the world where they grow. Then on to the morning tea stop beside a huge Tallowwood tree. It was Tallowwood that was used in the building of Binna Burra Lodge which tragically burnt in the fires. Following this we went through an area of forest oaks with their needles giving a lovely soft surface to walk on. We then came to the heathland where the rangers had a burn about 3 years ago. The regeneration there was amazing: all flora with new shoots and lovely colours on all shrubs and a wonderful display of wild flowers in bloom. At Molongolee Cave, Andrew told us so much about the origins of the area and layering of the rocks with various minerals contributing to the plants that we were seeing. Numinbah Lookout gave us views to the valley below and across to Springbrook. Next came Surprise Rock where we all climbed the first section to have distance views around us including the Hinze Dam and if it were not for the cloud, we could have seen the coast towards NSW. Walking down and around the Rock we had lunch and then homeward bound apart from a short detour to Nagarigoon Waterfall which was disappointing with the lack of water falling, but the rocks were interesting. And so back for "coffee" at the tea house.

The weather was perfect for walking with some using umbrellas as sunshades as well as for protection when there were a couple of very light showers. Most of the

moisture was from the clouds swirling around us which added to the atmosphere of the special place that we were in.

A special thank you to Andrew for sharing his knowledge and to Alison, Neville, Linda, Jeanette, Meryl, Thea, Jonathan, Susan, Bob, Ron, and Daphne for coming with me.

Map Group Report

Contributed by Len Lowry

Map Group recently hosted a very successful webinar "The Distinguished Life of a Queensland Railway Surveyor" which was delivered by Greg Hallam (Queensland Railway Historian). Thanks to Neville McManimm for making the original contact with Greg Hallam for this presentation. With a few initial technical issues resolved, the webinar was hosted by Kay Rees using her recently acquired skills in Zoom. Eight members viewed the webinar at the RGSQ office, and 14 members viewed online.



Greg has kindly given permission for the presentation to be made available for members to enjoy.

The slide presentation can be accessed from the RGSQ website under - Resources/Past Events/Past Events 2020 or <https://www.rgsq.org.au/pastevents2020>.

Members are looking forward to the next face to face meeting.

Introducing Geoff Paterson: Our member in Victoria

Greetings from Melbourne. I live in Caulfield, a suburb south of the CBD. Growing up in the 1950s, it was a suburb of interwar Californian Bungalows, strip (ribbon) shopping centres, some light industry, and the location for the Caulfield Cup. Today's Caulfield sees new houses and large multi-storey apartment blocks replacing the older houses. This has led to considerable citizen angst.



My geographical interests are wide ranging across physical and human geography and places in Australia, United States and Africa. I joined the RGSQ, among other societies, as there is no longer a geographical society in Victoria. We once had a Royal Geographical Society of Australasia which held meetings and published a substantial journal. However, the Society folded in the 1920s. I would like to see one (re)established. I have enjoyed being an RGSQ member and have attended two meetings in-person. However, I mostly hear of goings-on from afar through the informative *Bulletin*. Zoom has helped me to attend 2020 meetings including the AGM and a Map Group talk. I have greatly appreciated the informative Map Group reports for which I particularly thank Bob Abnett in previous years.

I graduated from Monash at the end of the 1960s before teaching geography for 41 years in Victorian government schools, retiring in 2012. My schools ranged from small rural to larger urban high schools. I finished my career in the Correspondence School, later Distance Education Centre Victoria. All my schools have been an eye opener and have given me a great education both geographically and more generally. I, particularly, enjoyed distance education as I had time to teach a range of students from school age to adulthood, developing teaching materials and using them in my teaching. I communicated with students across the state by telephone, radio, telematics, and email, with Skype and videoconferencing coming in around my retirement. I also visited students in rural schools across the state. I am a member of the Geography Teachers Association of Victoria and am currently *Reviews Editor* for *Geographical Education*, the annual online journal of the [Australian Geography Teachers Association](#). My aim as *Reviews Editor* is to select titles that reflect the diversity of geographical education, the discipline of geography and authors including geographers from Australia and overseas.



*Curfew details on 12 September 2020.
Photo Geoff Paterson.*

The Victorian capital is a great city but one which has had recent restrictions as shown by the photo. At time of writing these and many restrictions have been lifted. Now, travel to Queensland is rather difficult but I hope to travel north again and try to attend future RGSQ activities.

I extend Christmas Greetings to all members and may you have a Great and Better New Year.





WHAT'S ON IN 2021?

While we are finalising next year's programme, here's a teaser of what's in store. We look forward to seeing all our RGSQ members and welcoming new members in the new year!

DRAFT 2021 PROGRAMME

FEBRUARY

TUE 2: Event

Welcome to New Year and Upcoming Events

TBA: Special Interest Group - Map Group
Visit to Qld Globe

MARCH

TUE 2: Lecture

Mapping Pest Animals – Identifying and Managing Impacts, Matthew Ryan, Department of Agriculture, Fisheries and Forestry

FRI 5: Activity

Herbarium Mt Coot-tha Botanic Gardens with Lecture on Arctic Ocean and Antarctica

APRIL

WED 7: Activity

St Lawrence Urban Farm & Boggo Road Gaol

TUE 13: Lecture

Difficulties of communicating weather, Kate Doyle, ABC

MAY

TUE 4: Lecture

Blue Carbon, Prof Catherine Lovelock, UQ

FRI 7: Activity

Visit to Summer Land Camel Dairy, Harrisville

TBA: Special Interest Group - Map Group
Polynesian Navigators presentation

JUNE

TUE 1: Lecture

Thomson Oration, Prof Alaric Maude

TUE 22: Activity

Amberley Museum RAAF Base and North Ipswich Railway Workshops Museum

TBA: Special Interest Group - Map Group
Spring Hill Heritage Trail

JULY

TUE 6: Lecture

Disaster Recovery/Bushfires

Lee Johnson, The Bushfire and Natural Hazard Cooperative Research Centre

TUE 13: Activity

Christmas in July, Maleny

AUGUST

TUE 3: Lecture

Reimagining James Cook and Australian History

Martin Crotty, UQ

WED 18: Activity

Milne Bay Museum Chermide

TBA: Special Interest Group - Map Group
Upper Brisbane Valley 2-day O/N

SEPTEMBER

TUE 7: Student Forum and Discussion Panel

TBA: Potential long trek

OCTOBER

TUE 5: Ken Sutton Lecture

Prof Ian Rutherford, University of Melbourne

WED 13: Activity

Scenic Rim – Boonah and Mt French

TUE 19: Annual General Meeting

TBA: Special Interest Group - Map Group
Visit to State Library/John Oxley

NOVEMBER

TUE 2: Lecture

Megafauna extinction – a palynological perspective from eastern Australia, Prof Patrick Moss, UQ

TBA: Activity

Movie Museum Kenilworth and Pomona

DECEMBER

TBA: End of Year Christmas Celebration

MON 6: Special Interest Group - Map Group
End of Year Show and Tell and Social

For the most up-to-date information about events, including costs, please always check our website

www.rgsq.org.au.

Some dates and events as subject to change.
All events will be held in line with COVID-19 regulations of the day.

Answers to Christmas quiz Qs in President's message

Q1: In which modern-day country was St. Nicholas born?

Answer: Turkey (*originally Patara, a city in the ancient district of Lycia, in Asia Minor*)

<https://pilgrimagemedievalireland.com/2012/12/24/saint-nicholas-an-irish-connection>



Q2: What Christmas tradition began in Melbourne in 1938?

Answer: Carols by Candlelight.

<https://www.onlymelbourne.com.au/carols-by-candlelight-history>



Q3: Which country did eggnog come from?

Answer: Medieval England

<https://time.com/3957265/history-of-eggnog/>



Q4: Which country started the tradition of putting up a Christmas tree?

Answer: Germany (the Tannenbaum)

<https://www.history.com/topics/christmas/history-of-christmas-trees>



Q5: In Australia's version of the song 'Jingle Bells', what mode of transportation is used instead of a 'one-horse open sleigh'?

Answer: A rusty Holden ute.

<https://www.id.au/christmas/jinglebells.html>



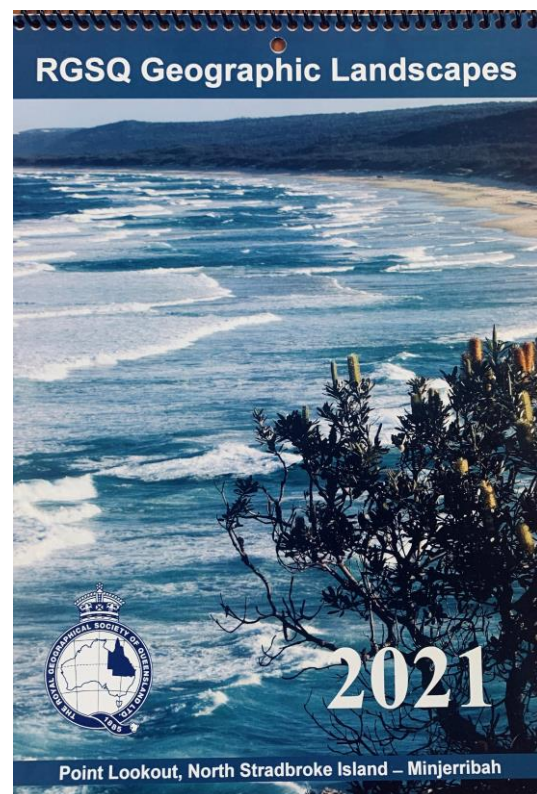
Q6: Christmas Island in Australia has an annual migration of which animal?

Answer: Red crabs.

<https://parksaustralia.gov.au/christmas/discover/highlights/red-crab-migration/>



2021 RGSQ Geographic Landscapes Calendar



Order your copy online at <https://rgsq.org.au/shop>; if you're having trouble using the online shop, please contact us at admin@rgsq.org.au or 07 3368 2066 or use the Order Form which you can download here <https://rgsq.org.au/resources/Shop/2020/RGSQ-Calendar-2021-order-form.pdf>

Support the Society and email the link <https://rgsq.org.au/shop> to a friend

The calendar contains an image for each month chosen from the recent photo competition, including the three winning entries.

Advance notice Geography conference

The 2021 Australian and New Zealand
Geography Conference IAG/NZGS:

“Remembering, Reimagining Geography”

will take place at the University of Sydney from 6
July – 9 July 2021.



RGSQ Office closure over the holiday season

The RGSQ office will be closed to members
and visitors from 1pm, Thursday 24th
December to Tuesday 12th January.

*With wishes of peace and joy, we send our
members the warmest greetings of the
season. May you enjoy every moment with
your family, friends, and those you love.*

Merry Christmas and Happy New Year!

RGSQ Bulletin

December 2020

Lecture/Meeting: Saturday, December 5
Traditional Christmas Party

**Order RGSQ's inaugural 2021 Geographic
Landscapes Calendar at**
<https://rgsq.org.au/shop>

W: www.rgsq.org.au
E: info@rgsq.org.au
P: 07 3368 2066

**The December Council will meet on
the third Tuesday of the month.**

The Royal Geographical Society of Queensland Ltd
PO Box 625, Spring Hill QLD 4004

**POSTAGE
PAID
AUSTRALIA**