



RGSQ Bulletin

ISSN 1832-8830

November 2020

Vol 55 no 10

Published by The Royal Geographical Society of Queensland Ltd., a not-for-profit organisation established in 1885 that promotes the study of geography and encourages a greater understanding and enjoyment of the world around us.

Patron: H.E. Paul de Jersey AC, Governor of Queensland

President: Dr Iraphne Childs

From the President

Dear members, I hope you are keeping well and enjoying the spectacular displays of our jacarandas and silky oaks in full bloom at this time of year.

The AGM

Thank you to all those members who attended the AGM via zoom on 20 October and who participated in the poll in advance of the meeting to progress important resolutions, including the election of a new Council for 2020-2021. All resolutions were carried and endorsed at the meeting. The incoming Council comprises an excellent balance of experienced continuing members, plus one new member. Together they provide academic, business, educational and professional expertise. I am honoured to have been appointed as President for another year and look forward to working with Councillors, staff and members to move our Society forward in 2021 and especially to see what can be accomplished before the end of 2020, this very unusual year.



At Government House

On the 1st October, I represented the RGSQ at Government House at an afternoon tea celebrating the Queen's birthday. At a table with Dr Ross Hynes, the President of the Royal Society of Queensland and Mr. Stephen Sheaffe, President of the Royal Historical Society of Queensland, we discussed how the challenges of 2020 had affected our respective societies. During the proceedings, His Excellency, The Honourable Paul de Jersey AC, patron of all three Societies, presented three documents, two of which have great historical significance for Queensland's Foundations and will henceforth be kept in the Queensland State Archives:

Queensland's birth certificate - a copy of the **Letters Patent**, signed by Queen Victoria dated 6 June 1859, establishing the separate Colony of Queensland. This copy was brought back to Queensland by Governor de Jersey following his visit to the National Archives in Kew, UK in November 2019.

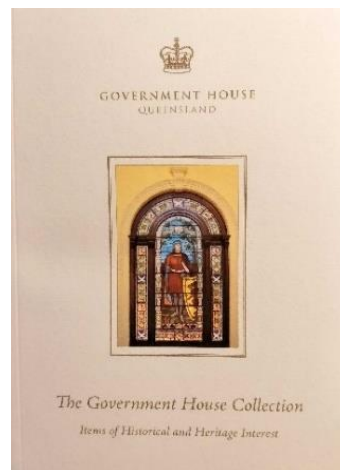
"Bowen's Instructions" – this is the original document, signed by Queen Victoria, dated 6 June 1859, issued to the first Queensland Governor Sir George Bowen who arrived in Brisbane on HMS *Cordelia*. These instructions guided Governor Bowen in establishing the system of democratic government prescribed by Queensland's first Constitution and the Letters Patent. In 1868, Sir George Bowen left Queensland to serve as Governor of New Zealand, Mauritius, and Hong Kong before returning to England. He, apparently, took the original instructions document for Queensland with him! After persistent and eventual successful overtures to Sir George and Lady Bowen's descendants, the redoubtable Queensland Women's Historical Association (QWHA) acquired the original document in the 1960s. On 1st May 1992, the QWHA presented a selection of items belonging to Sir George, including **Bowen's Instructions**, to then Governor Sir Walter Campbell.

These two documents provide a detailed description of Queensland's foundations and join other documents in the State Archives - the original Order in Council and the Proclamation read on 10 December 1859 from the balcony of Adelaide House, now in the grounds of the Anglican Cathedral in Brisbane.

The Government House Collection – Items of Historical and Heritage Interest – a booklet describing more than 1500 historical items, including portraits, works of art and furniture acquired and held at Government House over the past 160 years.

Copies of **Bowen's Instructions** and the **Items of Historical and Heritage Interest** booklet have now been donated to the RGSQ library.

Photos courtesy of Iraphne Childs.



With best wishes

Dr. Iraphne Childs, President

November Lecture - Tue 24 Nov – 7:30pm

“Where to begin with mapping the planet’s coral reefs?”

presented by Dr Emma Kennedy, UQ

Register at: <https://rgsq.org.au/event-3669849>



Credit: Megan Sanders

Advances in satellite imaging, processing power, analytical abilities and knowledge of coral reefs has finally made the goal of mapping the planet's coral reefs achievable. Despite several attempts to capture the diversity and distribution of shallow water reefs since the 1800s, to date, no reef map exists that offers complete global coverage at such a high level of geo-ecological detail. CubeSat imagery and cloud-based processing are being used by UQ's Remote Sensing Research Centre and collaborators to deliver state-of-the-art spatial products to support coral reef science, monitoring, management, and conservation. In this presentation, Dr Emma Kennedy will introduce the who, what, how and why of mapping the planet's coral reefs from space.

Dr Emma Kennedy is a coral reef ecologist and Research Fellow at the Remote Sensing Research Centre, University of Queensland. Her diverse research portfolio has included several high-profile collaborative projects, which have included monitoring the effects of climate change on reef communities; “listening” to coral reefs using acoustic sensors to assess reef health; using artificial intelligence to scale underwater monitoring capabilities, and investigating how a tiny pink seaweed might be the key to recovery of the Great Barrier Reef.

Emma currently works full-time on the Allen Coral Atlas reef mapping project as a spatial ecologist, supporting a cross-disciplinary team creating the first ever complete global habitat map of coral reefs. The project brings together remote sensing and mapping specialists at UQ (led by Dr Chris Roelfsema and Prof Stuart Phinn) with coral reef ecologists, geomorphologists, and conservation agencies in an unprecedented collaborative effort. As well as making the maps generated publicly accessible and user friendly, it is hoped that Atlas' online home will be a hub for existing oceanographic data and a repository for future coral reef data.

Please note: This will be a virtual lecture delivered online via Zoom. The lecture link will be emailed to all registrants closer to the lecture date. If you have any questions, please email us at info@rgsq.org.au.



TREKS AND ACTIVITIES

For details of upcoming events and to book see <https://rgsq.org.au/whatson>.

Thank You Competition Volunteers

Many thanks to the members who helped with mailing back the Competition results and certificates to schools: Roger Grimley, Laurel and Len Lowry, Neville McManimm, John and Mary Nowill, Sue Reid, Graham and Kay Rees, and John Wilkinson. Thanks, too, to other members who volunteered but were not needed because we finished the mail-out in double-quick time. This was not only because the amount of paper being returned was down compared to previous years due to COVID-19, but also because of how hard and efficiently our members worked.

We have extended maximum flexibility to schools because of the pandemic. Some schools, especially in Victoria, will get their students to take the Competition in Term 4, and we have undertaken to still mark their answer sheets and return certificates.

CONTRIBUTORS

Kath Berg, Iraphne Childs, Peter Griggs, Emma Kennedy, Moira Thomson

2020-2021 Council

President: Dr. Iraphne Childs

Treasurer: Dr. Annie Lau

Secretary: Mr. John Tasker

Vice-President: vacant

Councillors:

Ms. Kath Berg

Prof. Jonathan Corcoran

Mr. Ian Harding

Dr. Patrick Moss

Mr. Leo Scanlan

Ms. Daphne Stephens

Ms. Pamela Tonkin

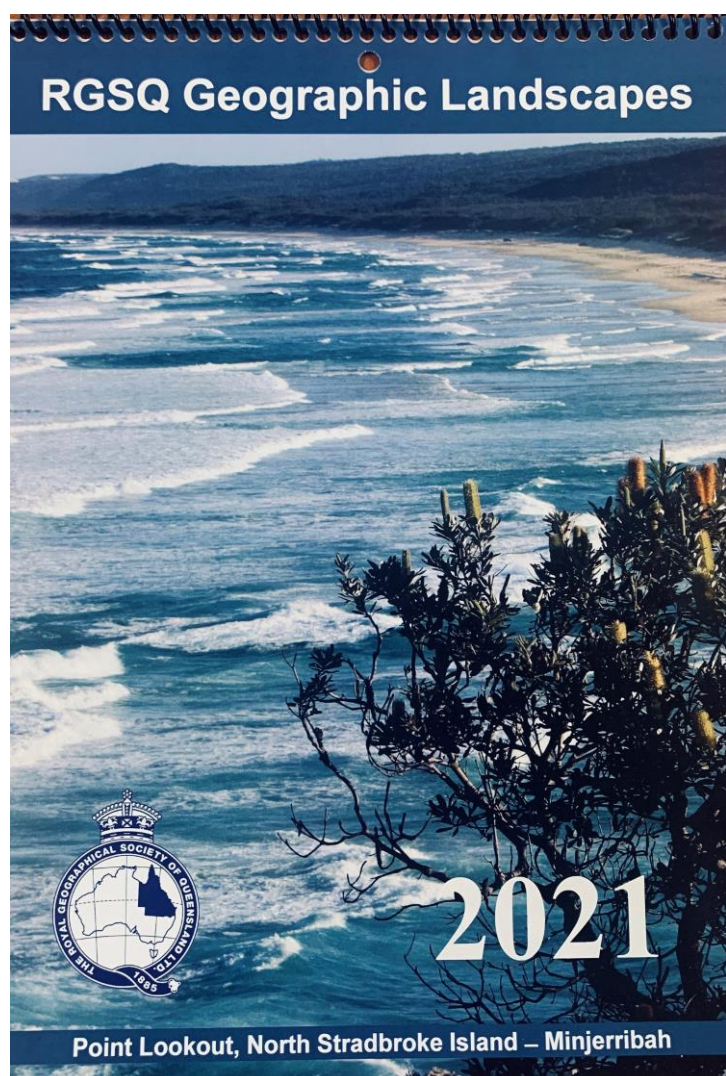
Dr. Stephen Turton

WELCOME NEW MEMBERS

We have much pleasure in welcoming Jinghan Li and Amelia Rowhani as new members of The Royal Geographical Society of Queensland. We hope your association with your new Society is long and mutually enjoyable.

The inaugural 2021 RGSQ Geographic Landscapes Calendar is out now.

Order your copy online at <https://rgsq.org.au/shop>; if you're having trouble using the online shop, please contact us at admin@rgsq.org.au or 07 3368 2066 or use Order Form which you can download here <https://rgsq.org.au/resources/Shop/2020/RGSQ-Calendar-2021-order-form.pdf>.



The calendar contains an image for each month chosen from the recent photo competition, including the three winning entries.

With a focus Queensland, both little heard of locations and some well-known spots caught at just the right moment to produce great images are featured. This is a fund-raiser for RGSQ so please order your copy online at <https://rgsq.org.au/shop>.



Support the Society and email the link <https://rgsq.org.au/shop> to a friend



Introducing a new member – Moira Thompson - from Biggenden

My name is Moira Thompson, and my parents were the late Harry and Claudy Frauca who came from Catalonia in northern Spain, arriving in Australia in 1955. Harry Frauca, a photographer, naturalist, and mountaineer, was author of over thirty-four books on Australian wildlife. Claudy was his assistant in photography and exploration. I was born in Hobart, but the inclement weather moved my parents to Bundaberg in search of the lungfish.

I grew up in Bundaberg, where our house was quite a menagerie! Insects destined for the CSIRO collection were in the fridge crisper drawer, live frogs were in containers ready to be photographed, live funnel web spiders were waiting to go to Sydney and a False Vampire Bat in a box in the freezer ready for a school "Show and Tell". My childhood was completely different to my peers, but it was such an adventurous, interesting and at times incredibly demanding lifestyle.

Exploration of the Wide Bay Burnett, especially Mt Walsh National Park Biggenden was our focus. Three insects have been named after the Frauca family, *Leptotarsus frauca*, (a crane fly), *Laxta frauca*, (a trilobite cockroach) *Enicospilus frauca* (an ichneumon wasp). These are all endemic to Mt Walsh NP (see photos). My parents were deceased by 1986, but that has not altered the direction of this Frauca child.

Outdoor adventure is a constant feature of our lifestyle and that of our children and grandchildren. In 2009 my husband and I moved to Biggenden and I set up Experience Altitude, a bush walking tour guide business. Over the years I have had the privilege of sharing the mountain, its ecology, geology and history with hundreds of children and adults. Living at the foot of the mountain has enabled me to continue exploring the Mt Walsh NP, and last year we completed the first recorded north to south traverse of the national park over three days.

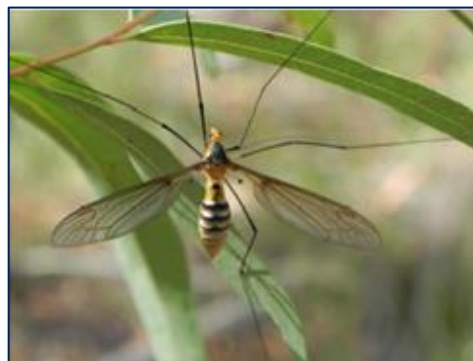
I have also had influence in initiating a mountain rescue team, as Mt Walsh has become very popular, but with that has been an increase in helicopter rescues. At present I am pursuing the Minister for the Environment to provide two full time rangers to manage our three national parks, Mt Walsh, Mt Woowoonga and Coalstoun Lakes as overuse has caused lots of damage. I have also been asked to be part of the management team for Mt Walsh NP moving forward, as I predict it will become another very popular national park. At present it is still considered remote. I am hoping that the RGSQ will be able to assist me in these endeavours too.

Welcome Moira, we hope you will enjoy your association with RGSQ and good luck with your work in national parks!

Images courtesy of Moira Thompson.



Harry Frauca, father of Moira Thompson



Leptotarsus frauca, (a crane fly)



Laxta frauca, (a trilobite cockroach)



Enicospilus frauca (an ichneumon wasp)

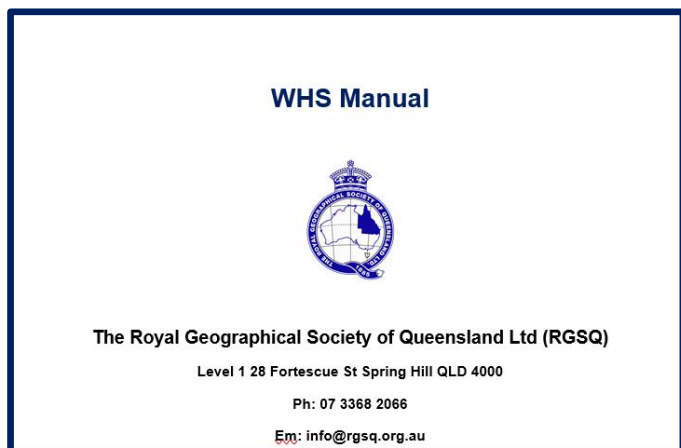
2020 Ken Sutton Address Recording



If you missed the 2020 Ken Sutton Address presented by Professor Ian Rutherford on October 6, you can catch up with the lecture on RGSQ's YouTube channel here <https://www.youtube.com/watch?v=plioVAM09xk> or on our website here <https://rgsq.org.au/pastlectures2020>.

The five issues of the **MemberConnect** newsletter published by the Society during COVID-19 can also be found on our website at <https://rgsq.org.au/Member-Connect>

RGSQ's Workplace Health and Safety (WH&S) manual now completed



Over the past eighteen months a WH&S Manual and Emergency Procedures have been prepared for the use of RGSQ. The Property Committee of RGSQ has reviewed the WH&S Standard. Final copies of these documents were submitted to the RGSQ Council and have been approved by Council.

The documents will be kept in the Office and are available to any member who wishes to peruse them. Many thanks to Neal O'Connor and Lilia Darii for much work involved in preparing and progressing this important Standard and to the Property Committee for monitoring and reviewing the document.

Royal Geographical Society - Wiley Digitalisation Program

Contributed by Peter Griggs, RGSQ member

The Royal Geographical Society (London) has recently partnered with Wiley on an extensive digitisation program of substantial parts of its pre-1945 Collections. Digitised materials are now available for research through the [Wiley Digital Archives \(WDA\) platform](#). [RGS Collections](#) contain over two million documents, maps, photographs, paintings, periodicals, artefacts and books, and span 500 years of geography, travel, and exploration.

Source: Australian & New Zealand Environmental History Network, "CFA: Royal Geographical Society-Wiley Digital Archive Research Fellowships," by [Alessandro Antonello](#) | Oct 7, 2020 |

Thank you to Chris Spriggs and Paul Feeney

The Society's treasurer, Chris Spriggs, is stepping down after many years from his role as Treasurer and Councillor. Chris was previously the Society's Secretary and for the past few years has expertly guided and clarified the Society's financial operations – this has been especially challenging through 2019-2020.

We thank Chris for generously agreeing to continue to assist with the accounts and to support the incoming Treasurer – Dr Annie Lau. Chris intends to carry on as an enthusiastic co-chair and member of the Treks and Activities Committee.

Vice-President - Paul Feeney is also stepping down from Council. Paul will continue to work on two major projects: The Central Qld long walk and Queensland By Degrees. Thanks, Paul, for your wise counsel during this year and for your continuing support to the Society.



Paul Feeney and Mary Comer at the official opening of Gregory Place; July 2019.



Calendar/s - Pick up from
RGSQ
\$15.00



1 Calendar incl post AU
\$17.45



2 Calendars incl post AU
\$33.55



3 Calendars incl post AU
\$50.75



4 Calendars incl post AU
\$65.75



5 Calendars incl post AU
\$80.75

**Order the inaugural RGSQ
Geographic Landscapes Calendar
now to ensure early delivery for Xmas**

For shipping of quantities over 5 within
Australia OR overseas orders please
enquire with the RGSQ Office:
Phone: 07 3368 2066
Email : info@rgsq.org.au

RGSQ Bulletin

November 2020

Lecture/Meeting: Tuesday 24 November

*"Where to begin with mapping the world's coral
reefs?"* presented by Dr Emma Kennedy

W: www.rgsq.org.au
E: info@rgsq.org.au
P: 07 3368 2066

**The November Council will meet on
the third Tuesday of the month.**

The Royal Geographical Society of Queensland Ltd
PO Box 625, Spring Hill QLD 4004

POSTAGE
PAID
AUSTRALIA