



RGSQ Bulletin

ISSN 1832-8830

July 2022
Vol 57 no 06

Published by The Royal Geographical Society of Queensland Ltd., a not-for-profit organisation established in 1885 that promotes the study of geography and encourages a greater understanding and enjoyment of the world around us.

Patron: [Her Excellency the Honourable Dr Jeannette Young PSM Governor of Queensland](#)
President: Mr John Tasker

What's happening on Council?

The Society's Council was scheduled to meet on Tuesday 21 June. Items of interest include:

- John Tasker represented the Society at a Government House function to mark the Queen's Birthday.
- A new organisation is being established – Geography Victoria. They have produced their first newsletter.
- Lilia Darii, Chris Spriggs and Annie Lau have been working to prepare for the end-of-year audit.
- Given the rise in inflation, a larger buffer to cover increased costs will be built into the 2022/23 budget.
- After some delays, the certificates and results of the Australian Geography Competition will be sent to schools on 23 and 24 June. Many thanks to the members who have volunteered to help with this.
- Geography's Big Week Out for high-achieving Year 11 students is being held in Darwin and Litchfield National Park in early July.
- The virtual International Geography Olympiad will be held mid-July. The Australian team, together with Kath Berg and John Tasker, will gather on the Gold Coast.
- The Collections Committee has applied for a grant for conservation work on 7 books and 6 maps that are important to RGSQ, have the highest priority, and whose condition is deteriorating.
- Thanks to Daphne Stephens who has volunteered to make the block-out covers needed for our new display cases.
- Don't forget about the photo competition. This year's theme is Waterways or Wetlands of Queensland.
- Before Covid put a stop to it, we were organising a Climate Change Forum for April 2020. We are now planning to hold a revised version later this year. We'll provide more details as they are finalised.
- The Geography in Conversation Group has held its first event – a great success and a sell-out. Congratulations to the members who have worked to set up this new opportunity for interaction and networking.

For further information on any item, please talk to a Society Councillor at a trip or lecture or send an email to info@rgsq.org.au.

Welcome to Annie Honey

Rachel Honey, the Australian Geography Competition Coordinator, gave birth on 20 June to a daughter – Anne Eleanor Honey. Congratulations and best wishes to Rachel and Annie. Rachel will be on parental leave for the next few months.

Vacancies on Council

Due to the recent resignations of Ian Harding and Daphne Stephens, there are two vacancies on the RGSQ Council. Enjoy this rewarding role alongside a dedicated team of members, and at the same time make a valuable contribution to your Society. If you are interested in the position and commitments, please feel free to discuss it with RGSQ President John Tasker at a meeting or via president@rgsq.org.au.

WHAT'S ON

For all upcoming RGSQ events, please visit the Society's website www.rgsq.org.au under 'What's On'.

JULY LECTURE

MAD DOGS AND ENGLISHMEN

presentation by Henk van Paridon, RGSQ Member

5 July, 7:30 PM – 9:00 PM @ Gregory Place, Level 1/28
Fortescue St, Spring Hill and via Zoom

Register: <https://rgsq.org.au/event-4859808>



Plate from the book *The Dead Heart of Australia* by JW Gregory published 1906. "The Last March. Mr Grayson leading the camels across the Peake Range"

J W (Jack) Gregory was an Englishman appointed as Professor of Geology at Melbourne University in 1901. He spent the summer of 1901-02 "on holiday" with a party of university students on a camel expedition to Lake Eyre. His mission was to study the formation and geology of the great central basin and to collect fossils of extinct gigantic fauna. He described this journey through a series of newspaper articles finally publishing the book "The Dead Heart of Australia" in 1906.

This presentation will retrace that journey and also fill in some details of the remarkable achievements of Jack Gregory before and after this expedition. He wrote over 20 books and published over 300 papers and was a celebrity in his day.

Bio: *Henk van Paridon* is a geophysicist with over 40 years' experience specialising in reflection seismic. Much of his career has been exploring for oil and gas in the Cooper Basin straddling SA and Qld. He has visited the area on many occasions and taken an interest in the early explorers, place names and maps. He has read many books of early travellers to all parts of the world and never ceases to be amazed by their stories.

Please note: if you register for the lecture via Zoom, the access link will be emailed to you closer to the lecture date. If you have any questions, please email us at info@rgsq.org.au.

Geography in Conversation



Queen's Wharf Development, Brisbane River Precincts and Lifestyles

July 26, 2022

Time: 5:30 light refreshments – doors open at 5:15

Q&A Forum: 6:00 – 7:30

Cost: \$5.00 for refreshments

Address: Level 1/28 Fortescue St, Spring Hill

Register: <https://rgsq.org.au/event-4870384>

Queen's Wharf Development, Brisbane River Precincts and Lifestyles, with guest speakers, **Mr Paul Krautz** the Project Director/State's Representative for the Queen's Wharf Brisbane (QWB) development, and **Mr Andrew Demack**, Advocacy Officer Bicycle Queensland (BQ).

The Q&A forum will enable you to ask questions on the planning process and design behind the QWB development and to hear how BQ promotes lifestyle for cyclists and others who share bikeways (e-scooters, walkers, prams, etc) along the Brisbane River. You are

invited to post questions on notice as well as ask them from the floor. Glamorous developments to enrich and extend the leisure, hospitality, and lifestyle in the Brisbane River precincts at times challenge the amenability of the river frontage for cyclists and others who share the cycle lanes and walkways.

Registering *members* please post your questions on notice to the GIC forum:

<https://rgsq.org.au/geographyinconversation/>

OR *non-members* email: questionsonnotice@gmail.com

Photo courtesy of Brisbane Destination Consortium.

Pamela Tonkin, Co-Convenor



TREKS AND ACTIVITIES

Jinibara at Woodfordia Day Trip

6 July, 9:00 AM – 4:00 PM at Woodfordia

Learn the story of the Jinibara Aboriginal People at their centre at Woodfordia

4 Space available

Register: <https://rgsq.org.au/event-4806190>



Credit: <https://www.jinibaragallery.com/>

In recognition of NAIDOC Week, the Society has organised **a coach trip to the Jinibara Aboriginal Centre in the grounds of Woodfordia (the site of the Woodford Folk Festival)**. Broadly, the traditional country of the Jinibara People is centred around Kilcoy and Woodford. Jinibara Country was recognised at Woodfordia by the National Native Title Tribunal in 2012. The Woodford Folk Festival has nurtured ties with the Jinibara people and hosts the Jinibara People Aboriginal Corporation. This trip travels from Enoggera via Petrie, Dayboro, and Mt Mee to Woodfordia with a stop for BYO morning tea. The cost includes the coach, and a cultural talk plus bush tucker lunch at the Jinibara Cultural Centre. There may be a walk of several hundred metres along a track.

Cost: \$70 for members, \$75 for non-members

Departure times and pick up points: (select one)

A. **9:00 am** Enoggera Bus Station (adjacent the Enoggera Railway Station) – parking in commuter carpark and adjacent streets

B. **9:15 am** Carseldine – Bus stop in Dorville Rd, between Denver Rd and Whitehorse St, opposite Gate 3 of former QUT campus – parking in adjacent streets

C. **9:30 am** Petrie – Petrie Railway Station, bus station – parking in commuter carpark and adjacent streets
Covid conditions apply

Proof of Covid vaccinations is required.

Ralph Carlisle, activity Coordinator

DAY TRIP: ROAMING THE REDLANDS

Thursday 18 August

4 spaces available

Register: <https://rgsq.org.au/event-4789926>



Join us, sit back, and relax as we travel through the Redlands with an informative **local guide**. Go from **Wellington Point** in the north to **Redland Bay** in the south.

Learn the history of the early settlers, land use changes (Cleveland-Raby Bay and Toondah Harbour), tales of intrigue, lighthouses, and origin of the Ekka strawberry sundae.

This scenic drive follows the coastal waters of Moreton Bay.

Tour includes **coach, morning tea, guided tour, and a 2-course lunch at local Golf Club**. There will be a **choice** of a main and dessert with tea or coffee.

Cost: \$75 member and \$80 non-member

Departure times and pick up points: (please select one when you register on the website)

- **A.** North side - 9am: Bus stop 27 Park Av Eagle Junction near EJ Rail Station
- **B.** South side - 9.30am: Bus stop 27 Morningside School of Arts (cnr Wynnum and Thynne Rd) Morningside (permission to park car in the grounds)
- **C.** South side - 9.45am: Kianawah Park Wynnum Road, Tingalpa (plenty of car parking space) near Gateway motorway. Bus stop opp. park heading east.

Covid conditions apply. Proof of vaccinations is required and masks to be worn indoors.

Register and pay by Monday 18 July 2022 @ <https://rgsq.org.au/event-4789926>

Do hope you can attend.

Jeanette Lamont, Coordinator

Photo: *Toondah Harbour From Public Boat Ramp, Cleveland, Queensland, 2014; Panthus, CC BY-SA 3.0 <<https://creativecommons.org/licenses/by-sa/3.0/>>, via Wikimedia Common*

Central Queensland Trek - Landscapes and Industry: 5-11 September

2 spaces available

Register: <https://rgsq.org.au/event-4692536>



Registration is now open for a **'tag-along' road trip to Central Queensland** in early September. The trip will visit a number of points of interest with a focus on their geographical significance.

The trip will start formally in Monto on Monday 5th September and visit Mt Morgan, Rockhampton, Gladstone, and places in between on sealed roads over a period of seven days, finishing in Gladstone on Sunday 11th September. Participants need to be in Monto by Sunday 4th September and can choose their own route and timing for their journeys from Brisbane to Monto (and return from Gladstone to Brisbane). On 11th September, the activity will be a harbour cruise which will finish at 1pm, allowing for an early departure to Brisbane for those who wish. The distance to be covered by the trek from Monto via Rockhampton to Gladstone will be about 600 km while Brisbane-Monto and Gladstone-Brisbane together add another 1000 km.

For those who wish, carpooling is encouraged.

Places to be visited may include:

- Cania Gorge National Park
- Callide Power Station lookout (near Biloela)
- Mt Morgan – former gold mine – lookouts and museums
- Calliope and Rockhampton – Tropic of Capricorn markers
- Rockhampton – lookouts, Botanic Gardens (heritage-listed) and other points of interest, Capricorn Caves (cave tour), Yeppoon and Emu Park (coastal landscapes)
- Gladstone – Awoonga Dam, industrial sites tour, harbour cruise

Accommodation and meals will be at participants' choice and cost. Overnight stops will be at Monto, Mt Morgan, Rockhampton, and Gladstone. For each stop, there is a selection of caravan parks (with cabins) and hotels/motels. Further details will be emailed to registrants.

Cost: the RGSQ fee of \$150 pp for members and \$155 pp for non-members covers commercial tour fees plus other expenses. This amount must be paid before registration is secured. Detailed itinerary and other information will be sent to participants upon registration. **The number of participants will be limited to 20.**

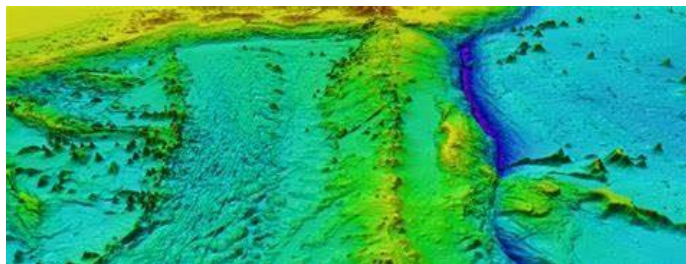
Ralph Carlisle, trip coordinator

Map Group: The Nippon Foundation Support for Seabed 2030

13 September, 10:00 AM – 12:00 PM @ Gregory Place, 1/28 Fortescue St, Spring Hill Qld 4000

Presenter: Keith Treschman, Map Group and RGSQ Member

Register: <https://rqsq.org.au/event-4824317>



Overview: The talk will present the history and techniques of ocean floor mapping, some of the results, and the intended trajectory to fulfill this concept. The aim of the Seabed 2030 project is to map 100% of the ocean floor by 2030; it is only 20% covered at the moment. To attend the event please **register** at <https://rqsq.org.au/event-4824317>.

Costs: \$2:00 contribution towards morning tea

Limit: 30. Registration on the website required

Coordinator: Kay Rees

Report: Map Group

Qld Globe presentation and workshop

In May, Map Group held two sessions to look at Qld Globe with Kerry Raymond our presenter. The first session was attended at Gregory Place by fourteen members with one joining by Zoom. We were shown how to navigate around the site using various tools.

As a follow-up, five members met a few weeks later where we could hone our skills by using these tools to locate specific places, check electoral boundaries, mining leases, farms etc. This will be a valuable site to use in the future and Map Group Committee thank Kerry very much for her expert guidance and patience.

Map Group Committee: Len, Neville & Kay

Photos of both sessions below:



Report: Building a City on a Floodplain

The first panel discussion of the Geography in Conversation series was held on Tuesday 24 May at the RGSQ office. Titled *'Building a City on a Floodplain'*, panellists Dr Margaret Cook (History Lecturer and author of 'A River with a City Problem') and Cr Jonathan Sri (Queensland Greens Councillor for The Gabba Ward with Brisbane City Council) joined Moderator Pres John Tasker to discuss issues with and solutions to the regular flooding of Brisbane.

The panellists engaged in a passionate debate about the impacts of climate change on Brisbane flood areas, how poor town planning legislation has exacerbated the issue and ways to minimise the impacts of climate change on Brisbane. The RGSQ Collections Committee prepared historic maps of major floods of Brisbane, demonstrating the differences between flooding events and the unpredictable nature of them. With lively debate both amongst the panellists and from the floor, the approximately 55 people in attendance enjoyed the ideas shared.



If you weren't able to be there for the evening, hop onto RGSQ's Facebook page to watch the recording:

<https://www.facebook.com/jonno.sri/videos/3087823341483546>

The next Geography in Conversation will once again be held at the RGSQ, on Tuesday 28 June 2022. The topic of 'Wetlands or Development' will be addressed by panellists Joshua Wilson (PhD candidate focussing on shorebird conservation) and Chris Walker (Secretary of Redlands 2030). Come along for wine, snacks, and a great chat!

Contributed by Stephen Schwer, Geography in Conversation



2022 PHOTO COMPETITION "Waterways or Wetlands of Queensland".

Members are invited to enter the 2022 RGSQ photographic competition. So, while travelling around Qld this winter make sure you keep your cameras rolling to snap those excellent photos. Entry fee is \$5 for up to a total of 5 photos.

PLEASE NOTE Entries for the competition submission open between 1st September and 31 October.

For inquiries, please contact Iraphne at i.childs@uq.edu.au or Kay at kayrees@gmail.com.

The **recording of the June lecture** presented by RGSQ Treasurer, Dr Annie Lau, is now available on the Society's YouTube channel:

<https://www.youtube.com/channel/UC2WD4ARJhBDliOxa3qndb4Q>

and website: <https://rgsq.org.au/Past-lectures-2022>

Enjoy!

Position available at RGSSA

The Royal Geographical Society of South Australia is offering a new and exciting opportunity for a foundation Director. This appointment is part of RGSSA's strategic vision, as the Society seeks to take the organisation to a new level of professionalism with a view to future growth. Initially the Director will be on a part-time basis for 12 months, but with a view to expanding the role in future.

The new Director will develop strategies to share the resources of the RGSSA more broadly with the public, attract sponsorship, build professional connections, and will also play a pivotal role in helping coordinate and oversee the work of volunteers in their day-to-day Society activities. If you know of anyone who may be interested in applying for the position, please direct them to the details on the RGSSA website at:

<https://rgssa.org.au/wp-content/uploads/2022/05/RGSSA-Director-Role.pdf>

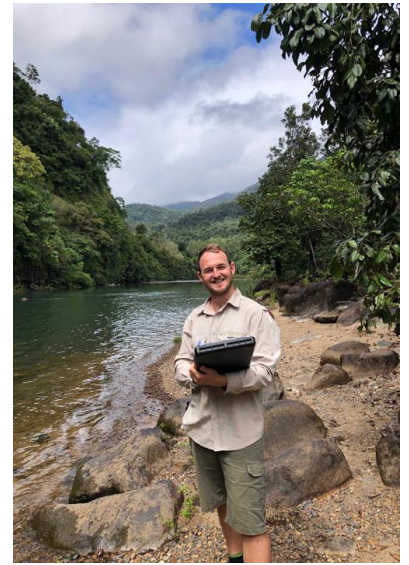
Initial inquiries can be directed to Immediate Past President, Rod Shearing OAM at admin@rgssa.org.au.

The deadline for applications is 1 July 2022.

Student Testimonial

Contributed by Fredrick Holden, winner of the Royal Geographical Society of Queensland Ltd Prize at James Cook University (JCU) for 2021

Studying at JCU has been a life-changing experience for me. About 4 years ago, temporarily out of work from a minor injury, I decided it was time to apply my skills to the field of environmental practice after years of discussion and an ever-increasing passion for environmental protection. JCU Cairns was chosen for its paradisiacal location and will continue to be a special place for me.



In June 2022, I will complete my studies at JCU and recently accepted a position as an undergraduate environmental scientist. I frequently recall a university lecturer offering their thoughts on work experience, describing their past in the private industry, government and now academia. Throughout my degree, I have worked as a ranger and environmental manager in the environmental field of eco-tourism and recently completed a work placement with the Queensland Department of Resources. It feels like the right time to gain some more experience in the applied science industry. However, as I reflect on the past three years and look at how much can be achieved at university, the idea of pursuing a research project or finding a specialization through a master's degree is appealing.

Thank you for your recognition of my hard work and dedication to geographical studies. I have always maintained a passion for the environment and believe that understanding the interactions between humans and the environment is one of the most important research spaces of our time. Decisions made by leaders during my career could set the stage for many generations to come, and I would like to take this opportunity to say I will not take this responsibility lightly.

I have developed a level of determination and perseverance since my decision to change careers, maintaining my steadfast mission to always put the environment first. Although this approach will face its challenges, as it has in the past, with confidence and an intolerance for apathy, I will continue with my endeavours in improving environmental outcomes, wherever my career takes me.

A big day in the 90-year history of Binna Burra!!



Contributed by Steve Noakes

Announced on 21 June by the Queensland Treasurer, Hon Cameron Dick, the Queensland Government will provide funding support of \$18 million to replace the historic, heritage listed Binna Burra Lodge and cabins which were destroyed in the disastrous Black Summer bushfires in 2019.

A further \$262.5 million will be committed to Queensland's national parks – seeing about one million hectares added to our national estate.

Find out more at: www.binnaburrallodge.com.au/news/qld-government-will-provide-funding-support-to-rebuild-the-historic-binna-burra-lodge/

Welcome New Members

We have much pleasure in welcoming Richard Mainey, Vrinda Eswaran, Philip Gidley, Jordan Hundloe, Maria Kottermair, and Tomas Leon as new members. We hope your association with your new Society is long and mutually enjoyable.

Contributors

Kath Berg, Ralph Carlisle, Iraphne Childs, Fredrick Holden, Jeanette Lamont, Len Lowry, Steve Noakes, Neville McManimm, Kay Rees, Henk van Paridon, Stephen Schwer, Pamela Tonkin, Keith Treschman

RGSQ Bulletin

July 2022

Meeting/Lecture: Tuesday 5 July

Mad Dogs and Englishmen
presentation by Henk van Paridon, RGSQ Member

Tuesday 26 July: Geography in Conversation

*Queens's Wharf Development, Brisbane River
Precincts and Lifestyles*

Activities: Wednesday 6 July

Jinibara at Woodfordia Day Trip

W: www.rgsq.org.au

E: info@rgsq.org.au

P: 07 3368 2066

The July Council will meet on the third Tuesday of the month.

The Royal Geographical Society of Queensland Ltd
PO Box 625, Spring Hill QLD 4004

POSTAGE
PAID
AUSTRALIA