



RGSQ Bulletin

ISSN 1832-8830

September 2022

Vol 57 no 08

Published by The Royal Geographical Society of Queensland Ltd., a not-for-profit organisation established in 1885 that promotes the study of geography and encourages a greater understanding and enjoyment of the world around us.

Patron: [Her Excellency the Honourable Dr Jeannette Young AC PSM, Governor of Queensland](#)

President: Mr John Tasker

What's happening on Council?

The Society's Council met on Tuesday 16 August. Items of interest include:

- The financial report for 2021/22 had been received from the auditor. Anne Lau thanked Lilia Darii, Chris Spriggs and Kath Berg for their help with the audit process.
- The quote to renew the Society's insurance policies was discussed and approved.
- The Annual General Meeting would be held in-person and zoomed, with voting in advance online or by mail.
- Council recorded its thanks to Daphne Stephens for making the covers for the new display cases and to Rob Cook for mounting the data projector on the ceiling of the board room.
- Pamela Tonkin is investigating RGSQ building signage with the body corporate.
- Information on the 2022 Photo Competition will shortly be added to the website.
- Margaret Hardy is assisting in compiling the Society's history post 1985.
- A reconnaissance had been undertaken for the Binna Burra Lodge mapping project and mapping would start later in August.
- Council gave feedback on the draft programme for the Climate Forum to be held on 29 October.
- The revised procedure manual of the Treks and Activities Committee was reviewed and suggested changes regarding risk assessment are to be sent to the Committee.
- No Geography in Conversation event would be held in October because of overlap with other events.
- The Map Group had to cancel its August talk because the speaker had Covid.
- The Young Geographers' Group had three upcoming events: 30 August – 'YG Professionals Talk: Geospatial Careers'; 6 September – 'Young Geographers Forum' in the Society's monthly lecture series; 10 September – 'Community Map-a-thon' a GIS project or skill-building activity.
- Council agreed to disband the Sunshine Coast Group as it was inactive and zoomed lectures broadened opportunities for members to participate in the Society. Engaging members from outside Brisbane in the Society would be considered during the strategic plan review.

For further information on any item, please talk to a Society Councillor at a trip or lecture or send an email to info@rgsq.org.au.

Thanks Daphne

Many thanks to Daphne Stephens for her expert handiwork making the covers for the new display cases, meeting the requirements of the conservator to protect the objects inside. Daphne custom made the covers to snugly fit the cases while at the same time being easy to put on and take off.

AGM and Council nominations

The RGSQ Annual General Meeting is on 18 October. If any member would like to nominate for the 2022-2023 Council, please email the Office at info@rgsq.org.au for a nomination form or to discuss a role on the Council please feel free to contact the President, John Tasker, at president@rgsq.org.au.

WHAT'S ON

For all upcoming RGSQ events, please visit the Society's website www.rgsq.org.au under 'What's On'.

Geography in Conversation

Brisbane Population Growth to 2030
27 September 2022

Register: <https://rgsq.org.au/event-4936487>



With guest speakers, Dr Heather Shearer, Griffith University Cities Research Institute and second speaker to be confirmed shortly. The Moderators for the evening will be Stella and Graeme Rush.

Brisbane's population is projected to increase by 400,000, and the greater Brisbane Area by 1 million by 2030. How is this growth to be managed and our lifestyle and living conditions improved? Two experts knowledgeable in this field will offer their views.

The Q & A forum will enable you to ask questions on the building design suitable for housing of the future and the infrastructure planning required to service increased demands on public roads, hospitals, schools, and other urban needs of the projected population.

Come along for light refreshments and social networking before settling in for a lively conversation.

Members registering please post your questions on notice to the GIC forum:

<https://rgsq.org.au/geographyinconversation/>

OR non-members

Email: questionsonnotice@gmail.com

Time: 5:30pm light refreshments – doors open at 5:15pm

Q&A Forum 6:00 – 7:30pm

Address: Gregory Place, Level 1, 28 Fortescue St, Spring Hill.

Cost: \$5:00 members; \$10:00 non-members (\$5.00 for refreshments, included in registration)

Image: Pamela Tonkin

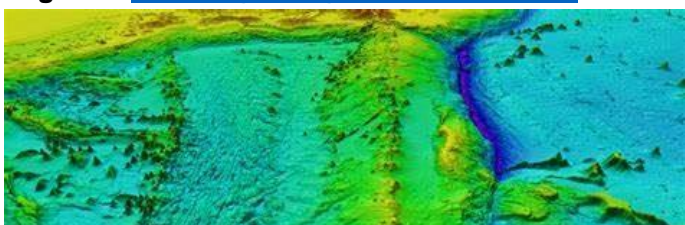
Pamela Tonkin, Co-Convenor

Map Group: The Nippon Foundation Support for Seabed 2030

13 September, 10:00 AM – 12:00 PM @ Gregory Place, 1/28 Fortescue St, Spring Hill Qld 4000

Presenter: Keith Treschman, Map Group and RGSQ Member

Register: <https://rgsq.org.au/event-4824317>



Overview: The talk will present the history and techniques of ocean floor mapping, some of the results, and the intended trajectory to fulfill this concept. The aim of the Seabed 2030 project is to map 100% of the ocean floor by 2030; it is only 20% covered at the moment.

Cost: \$2:00 contribution towards morning tea

Limit: 30 - registration on the website required

Coordinator: Kay Rees

REPORT: BREMER RIVER JUNCTION DAY CRUISE

On Tuesday 14 June, 35 members participated in this leisurely day cruise on the Lady Brisbane. It was a perfect day with sunshine and no wind. We travelled upstream to the Junction of the Bremer River. The boat departed from the "Recreation Hub" Pontoon 449 Kingsford Smith Drive, Hamilton at 9.00 and returned 4.00.

This classic hardwood, Ironbark timber boat has an interesting history. It was designed by Mill Kraft and built at Bulimba in 1972. It started its service as the Whitsunday Princess. Then it moved to Great Keppel Island before coming to Brisbane in 1996.



The commentary on board covered the history of the many bridges and land uses along the river. It was interesting to hear of the continuous horticultural history of the City Botanic gardens since 1828 and the site of the first commercially grown macadamia crops. Also sugar cane farms were developed on the north bank from the St Lucia Reach to Seventeen Mile Rocks in the 1860's. Frost in the 1870's ended the industry in Brisbane.

New riverside developments were seen. These included the Queen's Wharf, the shared Pedestrian and Bikeway at the four Indooroopilly bridges and the residential apartments in West End, Toowong, and Tennyson Reach.

Evidence of the February flood was particularly evidenced on the outer bends of the river. Residents had missing and twisted walkways and pontoons leading down from their properties to the river. The damage at Lone Pine's pontoon has yet to be repaired.

We had time to socialize, enjoy a BBQ lunch and fruit platter and wait for the Moggill ferry to cross from the Moggill to Ipswich side of the river. The boat stayed at the Bremer River junction for a brief time which allowed us to take in the scenery before turning around and retracing the journey.

We appreciated having a handout prepared by Helen Gregory to use and keep as a reminder of our informative and relaxing day cruising on the Brisbane River.

Photo: courtesy of Kay Rees

Jeanette Lamont, event coordinator

RGSQ collaborative trails mapping project with Binna Burra Lodge begins ...



Members familiar with Binna Burra may be interested to know about our mapping of walking trails project. Under a collaborative arrangement between Binna Burra Lodge and the RGSQ's Scientific Studies Committee, this project will aim to re-map more accurately existing and currently disused tracks and assess locations for possible future tracks on Binna Burra land.



On 20th July five RGSQ members of the project team (Ralph Carlisle, Iraphne Childs, Philip Gidley, Neville McManimm, and Giselle Pickering) visited

Binna Burra on a reconnaissance & project planning mission. Tim Medhurst, Binna Burra Lodge Development and Infrastructure Senior Consultant met with us to explain the location of walking tracks and plans for the re-development of Binna Burra's site post the 2019 fire. Despite the onset of another period of wet weather that week, fortunately we had chilly but just cloudy weather with a few light showers of rain that day. Tim guided us around Binna Burra to show us the entry points of existing open tracks and locations of some currently disused and possible future tracks.



We were able to do a short walk along the Bellbird track, above the cliffs with great views at the two lookout points over to Egg Rock, Turtle Rock, and Ship Stern. Special thanks to Neville for sharing his

many tales of bushwalking at Binna Burra. We were in awe to hear some of Neville's experiences and abseiling exploits! The second phase of the project, data collection on trails using GPS, will be conducted by the team on 23-25 August.

Photos – I.Childs and L.Pitcher (BBL Sales and Marketing)
For more information on Binna Burra's walking tracks see <https://www.binnaburralodge.com.au/walking-tracks-in-lamington-national-park/>

2022 Geography's Big Week Out



Students at Litchfield National Park

The 2022 Geography's Big Week Out (GBWO) was held from 3 to 7 July in Darwin and Litchfield National Park. Sixteen Year 11 students from around Australia were invited to participate, based on their outstanding performances in the Australian Geography Competition.

The activities were led by Steve Hawkins and Julie Hearnden, from the Geography and History Teachers' Association of the Northern Territory, and Shane Albertson and Kath Berg, from the Australian Geography Competition Committee.

GBWO was held in the week when more than half of all domestic flights were delayed or cancelled! However, we

managed to get all the students there by midnight and were relieved that we had not planned to travel to Litchfield National Park until the following day. GBWO was held in NAIDOC Week so before leaving Darwin we attended a ceremony to mark the start of the week.



Larrakia dancers at the Darwin flag-raising ceremony for NAIDOC Week

Students spent two days carrying out fieldwork in Litchfield National Park. They were investigating whether Litchfield NP was being managed sustainably as a tourist attraction while at the same time maintaining the values of a national park. Activities included: taking various stream measurements to assess popular swimming sites; recording numbers and demographics of visitors; interviewing visitors; mapping tourist infrastructure; and, discussing park values and threats to sustainability with a national park ranger.



Stream measurements in Litchfield National Park

There was also time for fun activities, such as visiting Mindil Beach Sunset Markets, swimming under waterfalls and a campfire with marshmallows.

Returning to Darwin, the students investigated whether Darwin Esplanade and the Waterfront Precinct met the principles of good design for urban public spaces. This involved some of the same activities as the students had carried out in Litchfield NP: recording numbers and demographics of visitors; interviewing visitors; mapping infrastructure – and experiencing the wave pool first-hand.



Interviewing a visitor to Litchfield National Park

Throughout GBWO students worked in groups, splitting tasks between the groups, and then sharing their data by uploading it to a common website.

On the last day the students sat a test from which we selected the team to represent Australia at the 2023 International Geography Olympiad to be held in Bandung, Indonesia. Congratulations to:

Marcus Len
Thomas Lin
Adit Mahidadia
Jasmine Ye

Normanhurst Boys High School
Canberra Grammar School
Sydney Boys High School
Meriden School

Students participating in next year's Australian Geography Competition will have the chance to represent their state/territory at the 2023 Geography's Big Week Out and their country at the 2024 International Geography Olympiad in Dublin.

For more information on the Competition, see the website at: www.geographycompetition.org.au or email competition@rgsq.org.au.

2022 International Geography Olympiad

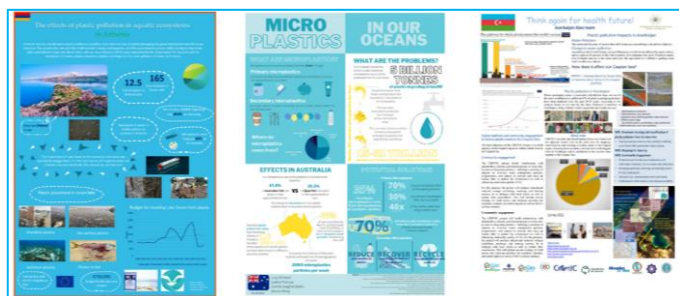
Students from a record 54 countries participated in the 2022 International Geography Olympiad. Unfortunately, it had to be held virtually, so instead of going to Paris, the Australian team gathered on the Gold Coast from 11 to 18 July. Representing Australia were:



L to r:
Ioanna,
Jessica,
Justine,
Lucy

Lucy Schwarz, Arden Anglican School, Sydney, NSW
Justine Thomas, Comet Bay College, Rockingham, WA
Ioanna Vaughan-Jones, Walford Anglican School for Girls, Adelaide, SA
Jessica Wang, St George Girls High School, Sydney, NSW

The Olympiad programme usually consists of: three separate exams; poster presentations; a cultural function; and, visits to places of geographical interest. For the poster presentation, teams prepared a poster in advance on the theme of microplastics, the effects in their country and possible solutions. They shared these online and met virtually in small groups to discuss each other's posters – not quite the same as a large noisy crowd of students engaged in face-to-face conversations!



Posters from Armenia, Australia and Azerbaijan

During the cultural function, teams participate in hands-on learning about some aspect of the host country's culture. Our French hosts came up with the smart idea of teaching

everyone to cook a classic French omelette. A list of ingredients and equipment was supplied in advance. Not all teams were able to access a kitchen, but some could. It was no problem for Australia as we were staying in a large house. So, with web cameras on, we got cooking.



A selection of teams cooking during the cultural function

As a small compensation for missing out on exploring Paris and the surrounding region, the students explored the Gold Coast and its hinterland – on the water, in the air and on the land.



Paddle boarding on Currumbin Creek

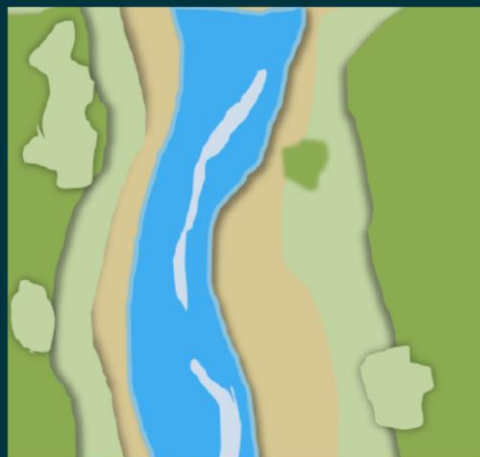


Exploring the Gold Coast hinterland from a helicopter

We are proud of the achievements of all four students but special congratulations to **Ioanna who was awarded a bronze medal**, and **Lucy a gold medal**.

The 2023 International Geography Olympiad will be held in Bandung, Indonesia. The whole Olympiad family is hoping it will be in person. Australia's team has been selected from Year 11 students who participated in the 2022 Australian Geography Competition, via Geography's Big Week Out.

Kath Berg, competition@rgsq.org.au.



RGSQ

2022

WATERWAYS or

WETLANDS

OF QUEENSLAND

PHOTOGRAPHY

COMPETITION



Submit your entries
from 1st September to
31st October 2022

1ST PRIZE

1 NIGHT ACCOMMODATION
AT BINNA BURRA
SKY LODGE

2ND PRIZE

FRAMED WILDLIFE
ILLUSTRATION BY
LOCAL BRISBANE ARTIST

3RD PRIZE

BOOK PRIZE

RGSQ invites **members**
to submit your
geographical photos of
Waterways or Wetlands of
Queensland for the 2022
photography competition.

Entry fee is \$5 for up to 5 photos
Payable via rgsq.org.au

Conditions

- Open for RGSQ members only
- Photos must be unpublished and taken in 2020-2022
- Photos should be high resolution

Submit to info@rgsq.org.au

.** By submitting your photos to the RGSQ 2022 Waterways or Wetlands of Queensland Photography Competition, you agree to share the photos with RGSQ for future use. All photos will be copyrighted under a Creative Commons Attribution 4.0 license, which means that each photo is owned by the creator (you as the photographer), and it can be shared and adapted freely when appropriate credit is given.

BINNABURRALODGE
LAMINGTON NATIONAL PARK | QUEENSLAND | AUSTRALIA



Inquiries to
i.childs@uq.edu.au or
kayrees@gmail.com

Welcome New Members

We have much pleasure in welcoming David Charles James, Tracy Fynmore, Keegan Faye McGuffie and Marie Oxlade, as new members. We hope your association with your new Society is long and mutually enjoyable.

Contributors

Kath Berg, Iraphne Childs, Jeanette Lamont, Kay Rees, Pamela Tonkin, Keith Treschman

A recording of the Society's August 2022 Lecture *Spatial Technology in the Classroom* presented by Brett Dascombe has been published on our YouTube channel:
<https://youtu.be/aa5k6pLMOpl>.

RGSQ Bulletin

September 2022

Meeting/Lecture: Tuesday 27 September
Geography in Conversation

Brisbane Population Growth to 2030

Tuesday 13 September: Map Group

The Nippon Foundation Support for Seabed 2030

W: www.rgsq.org.au

E: info@rgsq.org.au

P: 07 3368 2066

Activities: 5 – 11 September

Central Queensland Trek – Landscapes and Industry
Organised by the Treks and Activities Committee

The September Council will meet on the third Tuesday of the month.

The Royal Geographical Society of Queensland Ltd
PO Box 625, Spring Hill QLD 4004

**POSTAGE
PAID
AUSTRALIA**